

# Reversing load relay - ELR W1/ 6-24DC/RDT - 2982757


Please be informed that the data shown in this PDF Document is generated from our Online Catalog. Please find the complete data in the user's documentation. Our General Terms of Use for Downloads are valid (<http://phoenixcontact.com/download>)



Electronic reversing load relay, for controlling DC motors, with LED display and protective circuit, output: 10 - 30 V DC/6 A with a switch-over time of 1 ms



## Key Commercial Data

Packing unit	1 pc
GTIN	 4 046356 327251
GTIN	4046356327251

## Technical data

### Note

Utilization restriction	EMC: class A product, see manufacturer's declaration in the download area
-------------------------	---

### Input data

Input name	Device supply
Nominal supply voltage	24 V DC $\pm 20\%$
Input voltage range	19.2 V DC ... 28.8 V DC
Rated control circuit supply voltage $U_s$	24 V DC
Control supply voltage range	10 V DC ... 30 V DC
Rated control supply current $I_s$	7 mA
Protective circuit	Surge protection
Operating voltage display	Green LED
Input name	Control input right/left
Nominal input voltage $U_N$	24 V DC
Input voltage range in reference to $U_N$	0.8 ... 1.2
Input voltage range	19.2 V DC ... 28.8 V DC
Typical input current at $U_N$	3 mA
Rated actuating voltage $U_c$	24 V DC

# Reversing load relay - ELR W1/ 6-24DC/RDT - 2982757

## Technical data

### Input data

Triggering voltage range	19.2 V DC ... 28.8 V DC
Rated actuating current $I_C$	3 mA
Protective circuit	Reverse polarity protection
	Surge protection
Surge voltage protection	> 33 V DC
Typical response time	200 $\mu$ s
Status display	LED yellow, forward running (R), LED yellow, reverse running (L)
Current consumption	3 mA
Switchover time $R_L/L_L$ (turn-on time)	1 ms

### Output data load output

Output name	DC output
Rated operating voltage $U_e$	24 V DC
Operating voltage range	10 V DC ... 30 V DC
Type of protection	Reverse polarity protection
	Surge protection

### Connection data, control circuit

Connection name	Control circuits
Connection method	Screw connection
Stripping length	8 mm
Screw thread	M3
Conductor cross section solid	0.14 mm <sup>2</sup> ... 2.5 mm <sup>2</sup>
Conductor cross section flexible	0.14 mm <sup>2</sup> ... 2.5 mm <sup>2</sup>
Conductor cross section AWG	26 ... 14
Torque	0.5 Nm ... 0.6 Nm

### Connection data load circuit

Connection name	Load circuit
Connection method	Screw connection
Stripping length	8 mm
Screw thread	M3
Conductor cross section solid	0.14 mm <sup>2</sup> ... 2.5 mm <sup>2</sup>
Conductor cross section flexible	0.14 mm <sup>2</sup> ... 2.5 mm <sup>2</sup>
Conductor cross section AWG	26 ... 14
Torque	0.5 Nm ... 0.6 Nm

### General

Test voltage input/output	2.5 kV <sub>rms</sub>
Mounting position	vertical (horizontal DIN rail, motor output below)
Assembly instructions	alignable, for spacing see derating
Operating mode	100% operating factor

# Reversing load relay - ELR W1/ 6-24DC/RDT - 2982757

## Technical data

### Dimensions

Width	12.5 mm
Height	99 mm
Depth	114.5 mm

### Ambient conditions

Ambient temperature (operation)	-20 °C ... 60 °C
Ambient temperature (storage/transport)	-20 °C ... 80 °C
Degree of protection	IP20

### Standards and Regulations

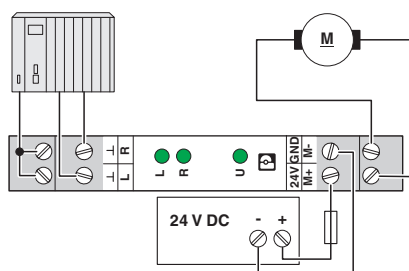
Designation	Air clearances and creepage distances between the power circuits
Standards/regulations	EN 50178
Insulation	Basic insulation
Degree of pollution	2
Overvoltage category	III

### Environmental Product Compliance

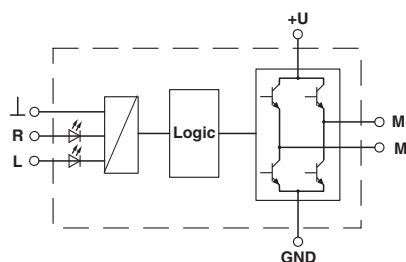
China RoHS	Environmentally Friendly Use Period = 50
	For details about hazardous substances go to tab "Downloads", Category "Manufacturer's declaration"

## Drawings

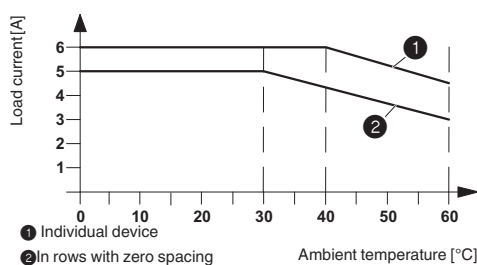
Connection diagram



Block diagram



Diagram



# Reversing load relay - ELR W1/ 6-24DC/RDT - 2982757

## Approvals

### Approvals

---

#### Approvals

UL Listed / cUL Listed / EAC / UL Listed / cUL Listed / EAC / cULus Listed

---

#### Ex Approvals

---

### Approval details

UL Listed		<a href="http://database.ul.com/cgi-bin/XYV/template/LISEXT/1FRAME/index.htm">http://database.ul.com/cgi-bin/XYV/template/LISEXT/1FRAME/index.htm</a>	FILE E 228652
-----------	--	---	---------------

cUL Listed		<a href="http://database.ul.com/cgi-bin/XYV/template/LISEXT/1FRAME/index.htm">http://database.ul.com/cgi-bin/XYV/template/LISEXT/1FRAME/index.htm</a>	FILE E 228652
------------	--	---	---------------

EAC			RU C- DE.A*30.B.01082
-----	--	--	--------------------------

UL Listed		<a href="http://database.ul.com/cgi-bin/XYV/template/LISEXT/1FRAME/index.htm">http://database.ul.com/cgi-bin/XYV/template/LISEXT/1FRAME/index.htm</a>	FILE E 228652
-----------	--	---	---------------

cUL Listed		<a href="http://database.ul.com/cgi-bin/XYV/template/LISEXT/1FRAME/index.htm">http://database.ul.com/cgi-bin/XYV/template/LISEXT/1FRAME/index.htm</a>	FILE E 228652
------------	--	---	---------------

EAC			RU C- DE.A*30.B.01082
-----	--	--	--------------------------

cULus Listed			
--------------	--	--	--

---

Phoenix Contact 2019 © - all rights reserved  
<http://www.phoenixcontact.com>

PHOENIX CONTACT GmbH & Co. KG  
Flachmarktstr. 8  
32825 Blomberg  
Germany  
Tel. +49 5235 300  
Fax +49 5235 3 41200  
<http://www.phoenixcontact.com>