



- Polyamide / PVC hand held enclosure for MCR and automation engineering
- Large fitting space
- Variable length using profile technology

Included in delivery

Enclosure system consisting of polyamide internal enclosure with end covers, two side PVC cover profiles, Alucobond composite front plate, rear wall, 2 external end covers, with M 25 x 1,5 threaded hole for cable gland

Technical data

Material:

Polyamide / PVC

Ingress protection:

IP 65 to EN 60529

Impact resistance:

5 Joule to EN 60079-0

Flammability:

End covers: UL 94 HB

Colour:

End covers: RAL 1021, rape yellow

PVC-profile: RAL 9005, jet black

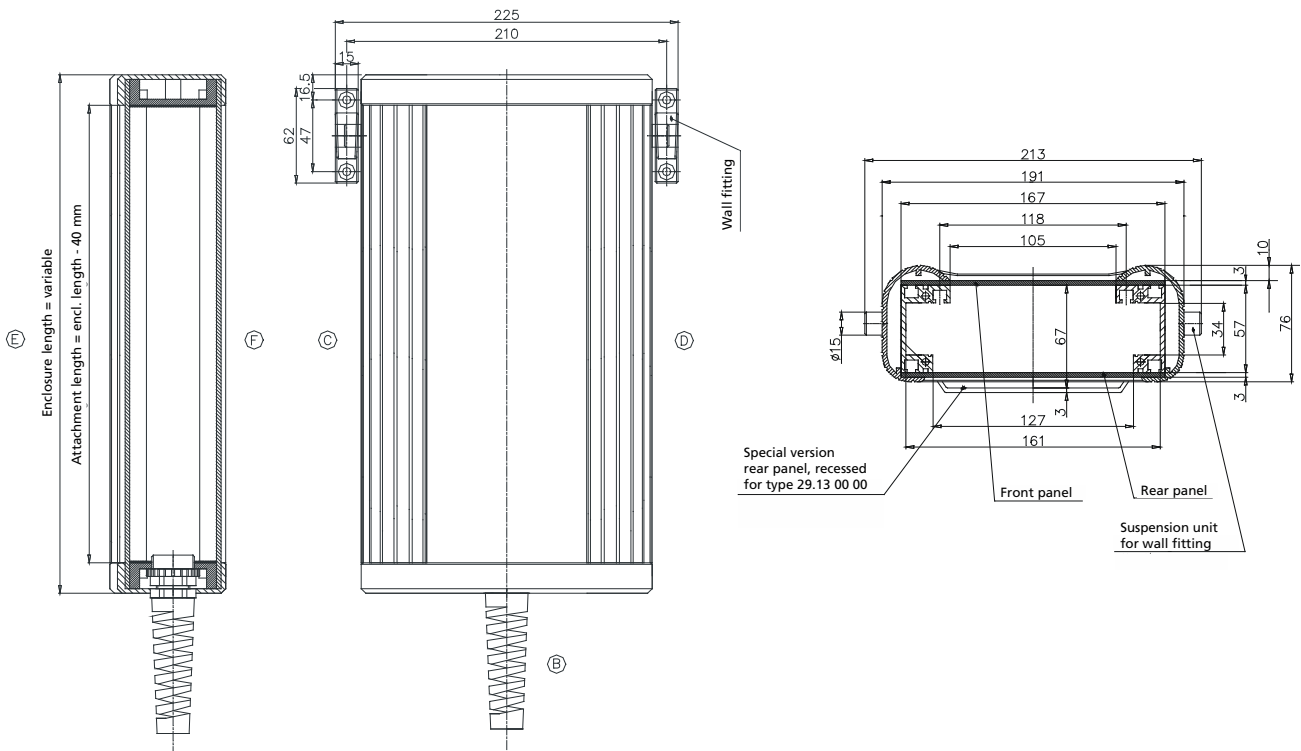
Temperature range:

-20°C to +70°C

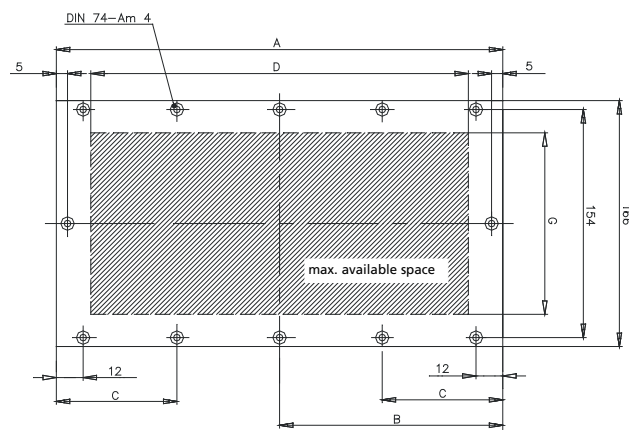
Dimensions



Standard	Dimensions	Weight (g)
29.11 10 00	280 x 191 x 76	1660
29.12 10 00	330 x 191 x 76	1900
29.13 10 00	440 x 191 x 76	2200
29.19 10 00	Special length	



Type	A	B	C	D	G
29.11 10 00	274	-	92	240	105/127
29.12 10 00	324	162	81	290	105/127
29.13 10 00	434	217	109	400	105/127
Special size, $A \leq 300$ mm	Enclosure length - 6	-	A/3	A - 34	105/127
Special size, $A \geq 300$ mm	Enclosure length - 6	A/2	A/4	A - 34	105/127



Pilot 50

Zubehör



PCB fixing set
Set = 4 pcs with spring nuts
Order No. **29.00 00 60**



Set of spring nuts
Spring nuts (M4) for internal mounting;
set = 4 pcs
Order No. **29.00 00 50**



Wall holder set
Order No. **29.00 00 70**



Pilot with small control device



Inner T-slots offer mounting facilities on all sides



EMC version



Variable fittings



- Hand held enclosure for MCR and automation engineering
- Robust design (Polyamide or Polyester)
- Version with handle and integrated cable entry (Pilot 10, 20 standard)

Included in delivery

Pilot 10/20: enclosure with handle, including cable gland M 20 x 1,5, front plate with fastening screw and wall holder

Pilot 30: two-part Polyester enclosure with self-adhesive aluminium front plate, enclosure screws and wall holder

Technical data

Material:

Pilot 10 and Pilot 20: Polyamide

Pilot 30: Polyester

Ingress protection:

Pilot 10 and Pilot 20: IP 65 to EN 60529

Pilot 30: IP 66 to EN 60529

Impact resistance:

7 Joule to EN 60079-0

Flammability:

Pilot 10 and 20: UL 94 HB

Pilot 30: UL 94 V-0

Colour:

RAL 1021, rape yellow

Temperature range:

Pilot 10 and Pilot 20: -40°C to +60°C

Pilot 30: -25°C to +90°C

Pilot 10/20/30

Product range

Type	Order No.	Enclosure dimensions incl. handle W x L x H (mm)	Front plate dimensions W x H (mm)	Mounting depth (mm)
Pilot 10	29.40 02 00	70 x 93 x 190	61 x 59	67
Pilot 20	29.30 01 00	115 x 93 x 200	106 x 69	67
Pilot 30	29.50 01 00	164 x 116 x 295	70 x 280	71

Accessories

Mounting plate (Pilot 20)	29.31 00 00
Wall holder (2 pcs. with screws)	29.60 01 00
Cable gland M 20 x 1,5 (Pilot 30)	08.10 01 20
Push button and switches see page 53 - 58	



Electromechanical components

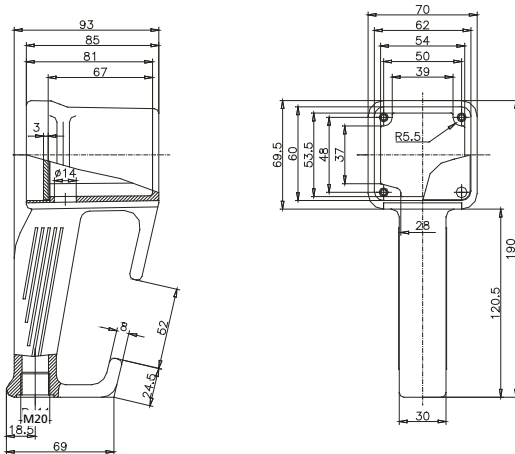
On request, we can supply equipment fitted with electro-mechanical components such as emergency stop button, acknowledge keys, hand wheel, switches, display

Dimensions

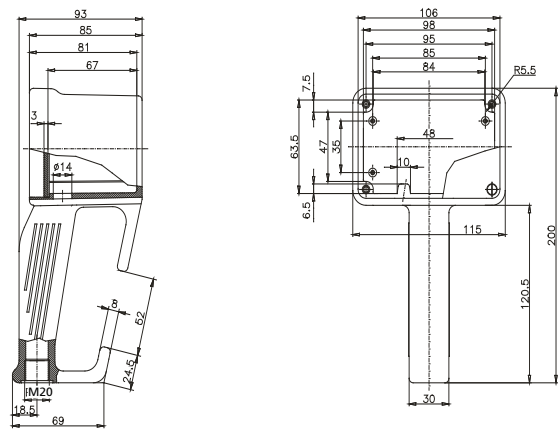


Type	Order No.	Weight (g)
Pilot 10	29.40 02 00	380
Pilot 20	29.30 01 00	440

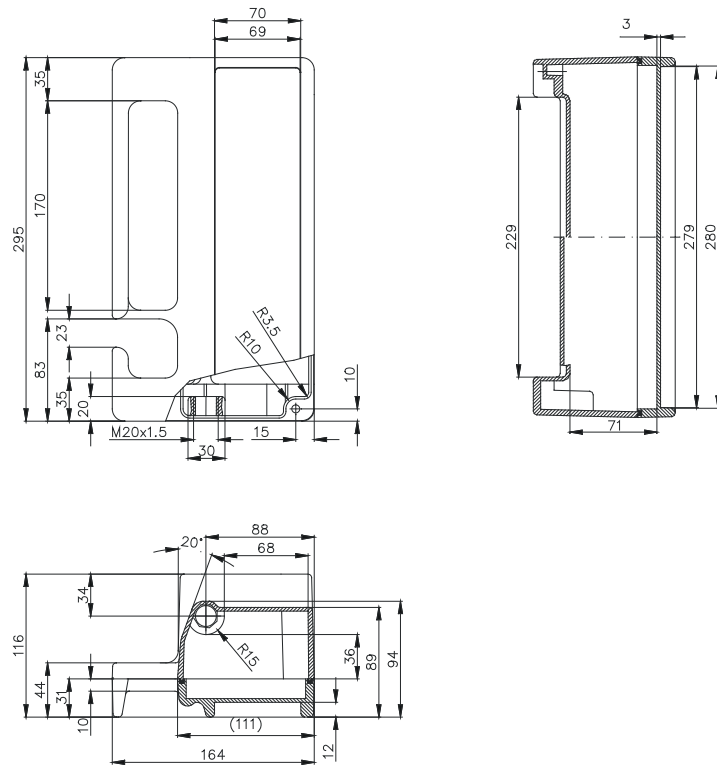
Pilot 10



Pilot 20



Type	Order No.	Weight (g)
Pilot 30	29.50 01 00	1700



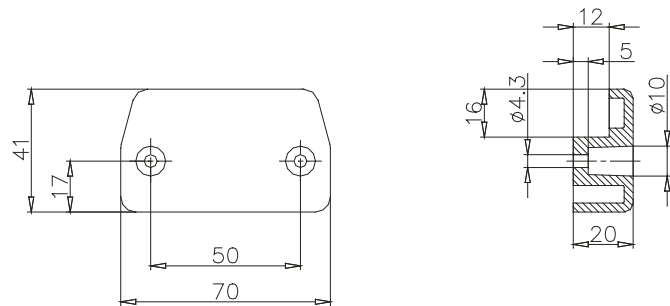
Pilot 10/20/30

Accessories



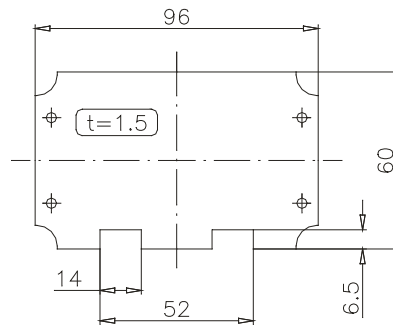
Wall holder
Set complete with 2 fittings and screws

Order No. **29.60 01 00**



Mounting plate Pilot 20

Order No. **29.31 00 00**



One and two button enclosures Pilot 10 / Pilot 20



Integrated handles on Pilot 10 and Pilot 20



Multi button enclosure Pilot 30



- Polyamide hand enclosure for automation and control engineering
- Version with handle and integrated cable entry
- Large fitting space

Technical data

Material:

Polyamide

Front plate: Polystyrol

Ingress protection:

IP 65 to EN 60529

Impact resistance:

7 Joule to EN 60079-0

Flammability:

UL 94 HB

Colour:

RAL 1021, rape yellow

Temperature range:

-40°C to +60°C

Included in delivery

Enclosure with handle, including cable gland M 20 x 1.5, front plate, enclosure and front panel screws, and wall holder

Pilot 110 - 150

Product range

Type	Order No.	Enclosure dimensions incl. handle W x L x H (mm)	Front plate dimensions W x H (mm)	Mounting depth (mm)
Pilot 110	29.21 10 00	85 x 85 x 191	77 x 77	63,5
Pilot 120	29.21 20 00	115 x 85 x 191	107 x 77	63,5
Pilot 130	29.21 30 00	85 x 85 x 221	77 x 107	63,5
Pilot 140	29.21 40 00	160 x 85 x 211	152 x 97	63,5
Pilot 150	29.21 50 00	105 x 85 x 266	97 x 152	63,5

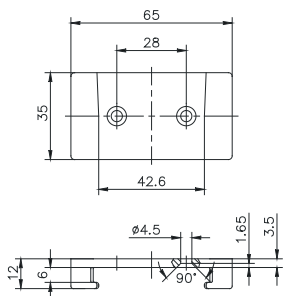
Accessories

Magnetic holder (for Pilot 120 - 150)	29.00 00 80
Push button and switches see page 53 - 58	



Electromechanical components

On request, we can supply equipment fitted with electro-mechanical components such as emergency stop button, acknowledge keys, hand wheel, switches, display

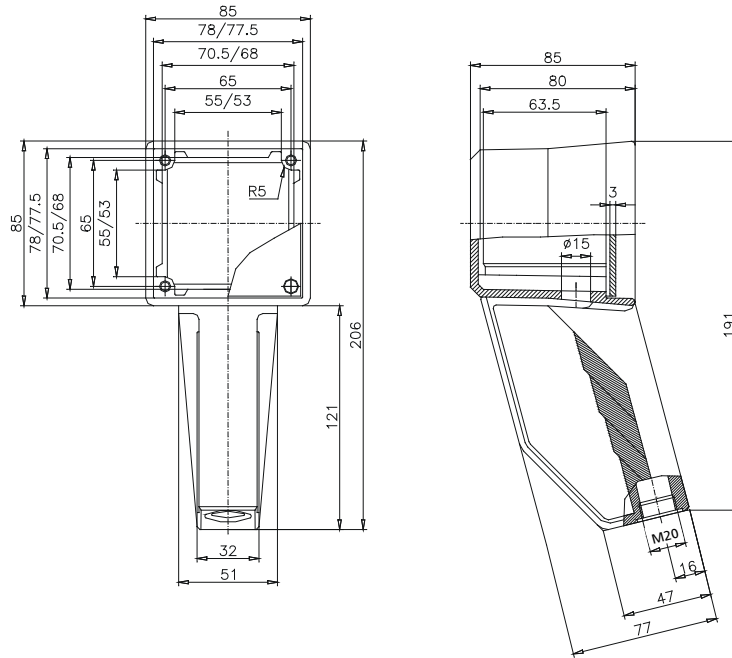


Wall holder
included in delivery

Dimensions

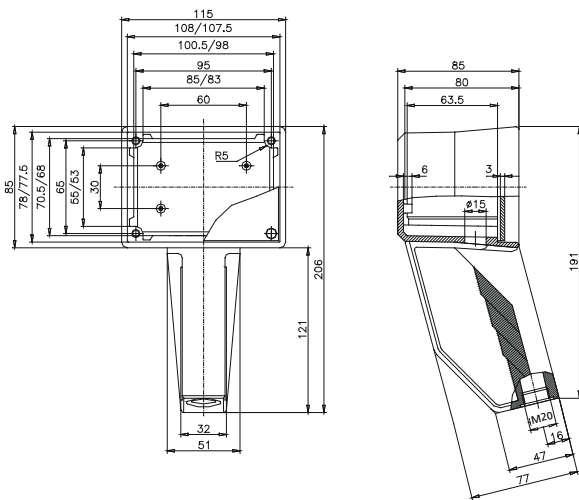


Type	Order No.	Weight (g)
Pilot 110	29.21 10 00	500

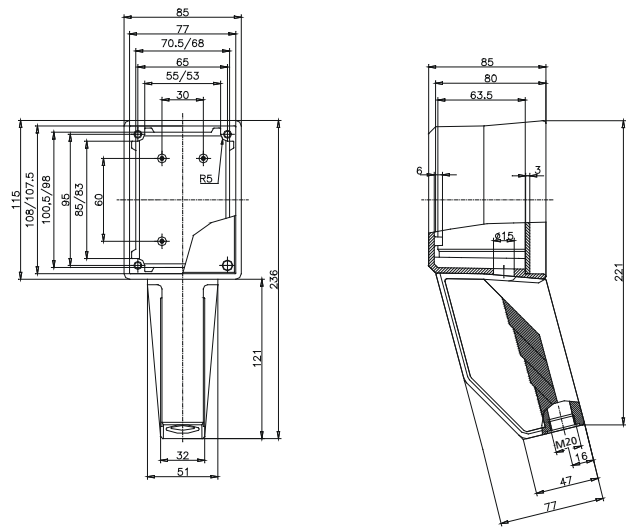


Type	Order No.	Weight (g)
Pilot 120	29.21 20 00	341
Pilot 130	29.21 30 00	341

Pilot 120



Pilot 130



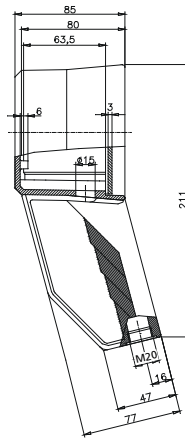
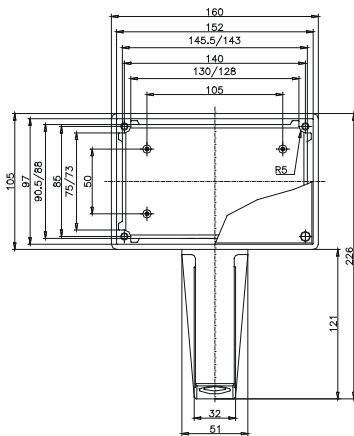
Pilot 110 - 150

Accessories

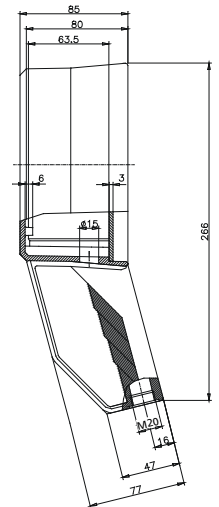
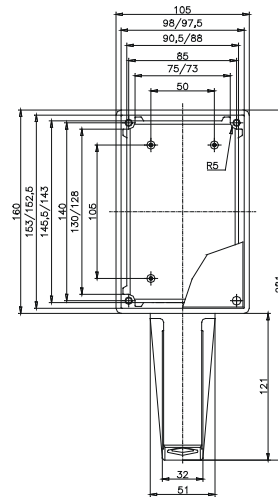


Type	Order No.	Weight (g)
Pilot 140	29.21 40 00	780
Pilot 150	29.21 50 00	780

Pilot 140



Pilot 150



Accessories



Magnetic holder
for Pilot 120 - 150, self-adhesive
dimensions: 90 x 30 x 7.5 mm

Order No. **29. 00 00 80**