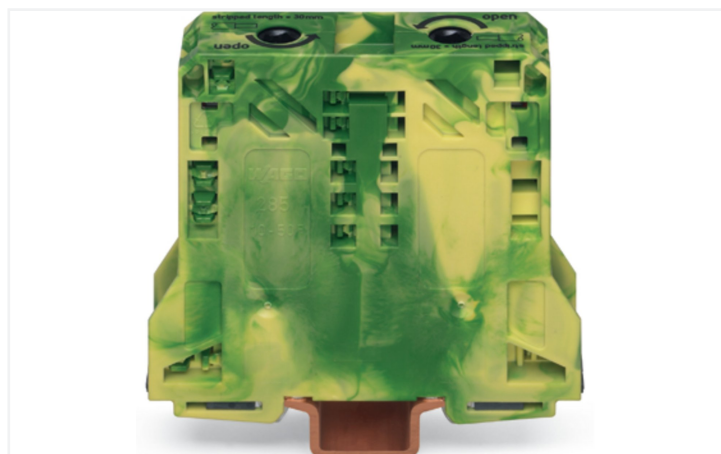
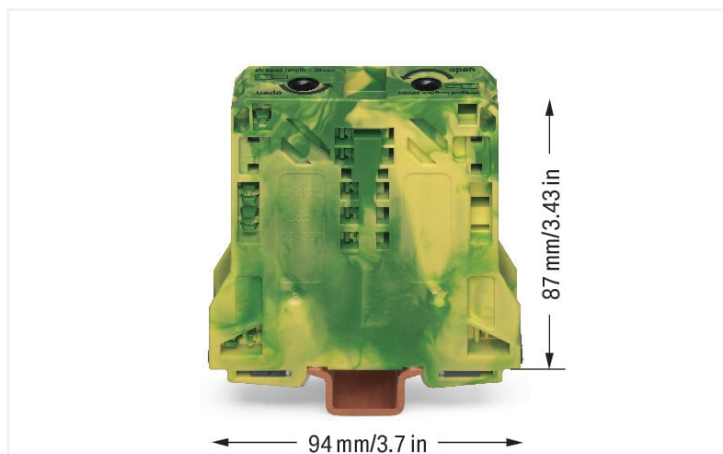


## Data Sheet | Item Number: 285-157

2-conductor ground terminal block; 50 mm<sup>2</sup>; lateral marker slots; only for DIN 35 x 15 rail; 2.3 mm thick; copper; POWER CAGE CLAMP; 50,00 mm<sup>2</sup>; green-yellow

<https://www.wago.com/285-157>



Color: ■ green-yellow

### Connection data

|                            |   |
|----------------------------|---|
| Clamping units             | 2 |
| Total number of potentials | 1 |
| Number of levels           | 1 |
| Number of jumper slots     | 2 |

### Connection 1

|   |   |
|---|---|
| Connection technology                             | POWER CAGE CLAMP                          |
| Actuation type                                    | T-wrench; 8 mm                            |
| Connectable conductor materials                   | Copper                                    |
| Nominal cross-section                             | 50 mm <sup>2</sup>                        |
| Solid conductor                                   | 10 ... 50 mm <sup>2</sup> / 8 ... 1/0 AWG |
| Stranded conductor                                | 10 ... 50 mm <sup>2</sup> / 8 ... 1/0 AWG |
| Fine-stranded conductor                           | 10 ... 70 mm <sup>2</sup> / 8 ... 2/0 AWG |
| Fine-stranded conductor; with insulated ferrule   | 10 ... 50 mm <sup>2</sup> / 8 ... 1/0 AWG |
| Fine-stranded conductor; with uninsulated ferrule | 10 ... 50 mm <sup>2</sup> / 8 ... 1/0 AWG |
| Strip length                                      | 30 mm / 1.18 inches                       |
| Wiring direction                                  | Side-entry wiring                         |

### Physical data

|                                   |                      |
|-----------------------------------|----------------------|
| Width                             | 20 mm / 0.787 inches |
| Height                            | 94 mm / 3.701 inches |
| Depth from upper-edge of DIN-rail | 87 mm / 3.425 inches |

### Mechanical data

|                 |   |
|-----------------|---|
| Mounting type   | DIN-rail 35 x 15; 2.3 mm thick; copper                  |
| Mounting (note) | only suitable for DIN 35 x 15 copper rail; 2.3 mm thick |
| Marking level   | Side marking  |

### Material data

|                                    |  |
|------------------------------------|--|
| Note (material data)               | <a href="#">Information on material specifications can be found here</a> |
| Color                              | green-yellow   |
| Material group                     | I  |
| Insulation material (main housing) | Polyamide (PA66)   |
| Flammability class per UL94        | V0   |
| Fire load                          | 1.986 MJ   |
| Weight                             | 186.5 g  |

### Environmental requirements

|                                  |                 |
|----------------------------------|-----------------|
| Processing temperature           | -35 ... +85 °C  |
| Continuous operating temperature | -60 ... +105 °C |

### Commercial data

|                       |                                  |
|-----------------------|----------------------------------|
| Product Group         | 1 (Rail Mounted Terminal Blocks) |
| eCl@ss 10.0           | 27-14-11-41                      |
| eCl@ss 9.0            | 27-14-11-41                      |
| ETIM 9.0              | EC000901                         |
| ETIM 8.0              | EC000901                         |
| PU (SPU)              | 5 pcs                            |
| Packaging type        | Box                              |
| Country of origin     | PL                               |
| GTIN                  | 4045454507435                    |
| Customs tariff number | 85369010000                      |

### Environmental Product Compliance

|                        |                         |
|------------------------|-------------------------|
| RoHS Compliance Status | Compliant, No Exemption |
|------------------------|-------------------------|

### Approvals / Certificates

#### General approvals



| Approval                              | Standard      | Certificate Name |
|---------------------------------------|---------------|------------------|
| CCA<br>DEKRA Certification B.V.       | EN 60947      | NTR NL-7707      |
| CSA<br>DEKRA Certification B.V.       | C22.2 No. 158 | 154112           |
| KEMA/KEUR<br>DEKRA Certification B.V. | EN 60947      | 71-105562        |
| UL<br>Underwriters Laboratories Inc.  | UL 1059       | E45172           |

#### Declarations of conformity and manufacturer's declarations



| Approval   | Standard | Certificate Name |
|--|----------|------------------|
| EU-Declaration of Conformity<br>WAGO GmbH & Co. KG | -        | -                |
| Railway<br>WAGO GmbH & Co. KG                      | -        | Z00004420.000    |
| UK-Declaration of Conformity<br>WAGO GmbH & Co. KG | -        | -                |

Approvals for hazardous areas



| Approval                                 | Standard | Certificate Name                          |
|--|----------|---|
| AEx<br>Underwriters Laboratories<br>Inc. | -        | E185892 (AEx eb II C resp.<br>Ex eb II C) |

Downloads

Environmental Product Compliance

| Compliance Search                           |
|---|
| Environmental Product<br>Compliance 285-157 |

Documentation

| Additional Information                 |
|--|
| Technical Section<br>pdf<br>2246.92 KB |

| Bid Text |            |     |          |  |
|----------|------------|-----|----------|--|
| 285-157  | 19.02.2019 | xml | 3.13 KB  |  |
| 285-157  | 04.01.2018 | doc | 23.50 KB |  |

CAD/CAE-Data

| CAD data             |
|----------------------|
| 2D/3D Models 285-157 |

| CAE data                     |
|------------------------------|
| EPLAN Data Portal<br>285-157 |
| WSCAD Universe<br>285-157    |
| ZUKEN Portal 285-157         |

1 Compatible Products

1.1 Optional Accessories

1.1.1 Cover

1.1.1.1 Cover



**Item No.: 285-441**  
 Finger guard; touchproof cover protects unused conductor entries and jumper slots; for 50 mm² high-current tbs; yellow

## 1.1.2 DIN-rail

### 1.1.2.1 Mounting accessories



**Item No.: 210-198**

Copper carrier rail; 35 x 15 mm; 2.3 mm thick; 2 m long; unslotted; according to EN 60715; copper-colored

## 1.1.3 Ferrule

### 1.1.3.1 Ferrule



**Item No.: 216-424**

Ferrule; Sleeve for 35 mm<sup>2</sup> / AWG 2; uninsulated; electro-tin plated; electrolytic copper; gastight crimped; acc. to DIN 46228, Part 1/08.92; silver-colored



**Item No.: 216-425**

Ferrule; Sleeve for 50 mm<sup>2</sup> / AWG 1; uninsulated; electro-tin plated; electrolytic copper; gastight crimped; acc. to DIN 46228, Part 1/08.92

## 1.1.4 Installation

### 1.1.4.1 Mounting accessories



**Item No.: 285-448**

Fixing element; for 50 mm<sup>2</sup> high-current terminal blocks; orange



**Item No.: 249-197**

Screwless end stop; 14 mm wide; for DIN-rail 35 x 15 and 35 x 7.5; gray

## 1.1.5 Jumper

### 1.1.5.1 Jumper



**Item No.: 285-450**

Jumper; insulated; gray

## 1.1.6 Marking

### 1.1.6.1 Group marker carrier



**Item No.: 249-105**

Group marker carrier; gray

1.1.6.2 Marker



**Item No.: 793-5501/000-006**  
WMB marking card; as card; for terminal block width 5 - 17.5 mm; stretchable 5 - 5.2 mm; plain; snap-on type; blue



**Item No.: 793-5501/000-014**  
WMB marking card; as card; for terminal block width 5 - 17.5 mm; stretchable 5 - 5.2 mm; plain; snap-on type; brown



**Item No.: 793-5501/000-007**  
WMB marking card; as card; for terminal block width 5 - 17.5 mm; stretchable 5 - 5.2 mm; plain; snap-on type; gray



**Item No.: 793-5501/000-023**  
WMB marking card; as card; for terminal block width 5 - 17.5 mm; stretchable 5 - 5.2 mm; plain; snap-on type; green



**Item No.: 793-5501/000-017**  
WMB marking card; as card; for terminal block width 5 - 17.5 mm; stretchable 5 - 5.2 mm; plain; snap-on type; light green



**Item No.: 793-5501/000-012**  
WMB marking card; as card; for terminal block width 5 - 17.5 mm; stretchable 5 - 5.2 mm; plain; snap-on type; orange



**Item No.: 793-5501/000-005**  
WMB marking card; as card; for terminal block width 5 - 17.5 mm; stretchable 5 - 5.2 mm; plain; snap-on type; red



**Item No.: 793-5501/000-024**  
WMB marking card; as card; for terminal block width 5 - 17.5 mm; stretchable 5 - 5.2 mm; plain; snap-on type; violet



**Item No.: 793-5501**  
WMB marking card; as card; for terminal block width 5 - 17.5 mm; stretchable 5 - 5.2 mm; plain; snap-on type; white



**Item No.: 793-5501/000-002**  
WMB marking card; as card; for terminal block width 5 - 17.5 mm; stretchable 5 - 5.2 mm; plain; snap-on type; yellow



**Item No.: 793-501/000-006**  
WMB marking card; as card; not stretchable; plain; snap-on type; blue



**Item No.: 793-501/000-007**  
WMB marking card; as card; not stretchable; plain; snap-on type; gray



**Item No.: 793-501/000-023**  
WMB marking card; as card; not stretchable; plain; snap-on type; green



**Item No.: 793-501/000-017**  
WMB marking card; as card; not stretchable; plain; snap-on type; light green



**Item No.: 793-501/000-012**  
WMB marking card; as card; not stretchable; plain; snap-on type; orange



**Item No.: 793-501/000-005**  
WMB marking card; as card; not stretchable; plain; snap-on type; red



**Item No.: 793-501/000-024**  
WMB marking card; as card; not stretchable; plain; snap-on type; violet



**Item No.: 793-501**  
WMB marking card; as card; not stretchable; plain; snap-on type; white



**Item No.: 793-501/000-002**  
WMB marking card; as card; not stretchable; plain; snap-on type; yellow



**Item No.: 2009-115/000-006**  
WMB-Inline; for Smart Printer; 1500 pieces on roll; stretchable 5 - 5.2 mm; plain; snap-on type; blue



**Item No.: 2009-115/000-007**  
WMB-Inline; for Smart Printer; 1500 pieces on roll; stretchable 5 - 5.2 mm; plain; snap-on type; gray



**Item No.: 2009-115/000-023**  
WMB-Inline; for Smart Printer; 1500 pieces on roll; stretchable 5 - 5.2 mm; plain; snap-on type; green



**Item No.: 2009-115/000-017**  
WMB-Inline; for Smart Printer; 1500 pieces on roll; stretchable 5 - 5.2 mm; plain; snap-on type; light green



**Item No.: 2009-115/000-012**  
WMB-Inline; for Smart Printer; 1500 pieces on roll; stretchable 5 - 5.2 mm; plain; snap-on type; orange



**Item No.: 2009-115/000-005**  
WMB-Inline; for Smart Printer; 1500 pieces on roll; stretchable 5 - 5.2 mm; plain; snap-on type; red



**Item No.: 2009-115/000-024**  
WMB-Inline; for Smart Printer; 1500 pieces on roll; stretchable 5 - 5.2 mm; plain; snap-on type; violet



**Item No.: 2009-115**  
WMB-Inline; for Smart Printer; 1500 pieces on roll; stretchable 5 - 5.2 mm; plain; snap-on type; white



**Item No.: 2009-115/000-002**  
WMB-Inline; for Smart Printer; 1500 pieces on roll; stretchable 5 - 5.2 mm; plain; snap-on type; yellow

1.1.6.3 Marker carrier



**Item No.: 285-442**  
Adaptor; gray

1.1.7 Power tap

1.1.7.1 Power tap



**Item No.: 285-447**  
Power tap; for 50 mm<sup>2</sup> high-current tbs; Module width 16 mm; gray

### 1.1.8 Protective warning marker

#### 1.1.8.1 Cover



**Item No.: 285-440**

Protective warning marker; with high-voltage symbol, black; yellow

**Item No.: 285-449**

Protective warning marker; yellow

### 1.1.9 Tool

#### 1.1.9.1 Operating tool



**Item No.: 285-172**

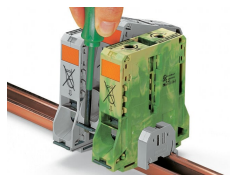
Allen wrench; with a partially insulated shaft; green

**Item No.: 285-173**

Allen wrench; with a partially insulated shaft; with anti-rotation protection; green

## Installation Notes

### Installation



Removing a terminal block from the assembly (to the left or to the right).

**Grounding foot:**

Ground conductor terminal blocks (limited to max. 120 mm<sup>2</sup>/250 kcmil per EN 60947-7-2) must be snapped onto a 2.3 mm thick copper DIN-rail.

## Conductor termination



For the optimal clamping force:

- Bend conductor
- Cut conductor to length (conductor end must be straight)
- Strip conductor

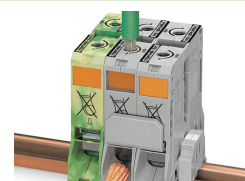


Always observe the on-unit printed strip length guide!



**Conductor termination – step 1:**

Rotate the T-wrench counter-clockwise to the stop. Next, push in the orange locking tab. The clamp is locked open for hands-free wiring.



**Conductor termination – step 2:**

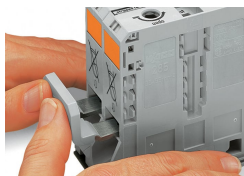
Insert a stripped conductor into the clamping unit until it hits the backstop. Hold in this position.



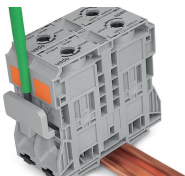
**Conductor termination – step 3:**

A short counter-clockwise rotation releases the tab. When unlocked, the T-wrench rotates clockwise, securely clamping the conductor.

### Commoning



Commoning with an adjacent jumper: insert the jumper above the conductor entry hole – prior to conductor termination. The nominal cross-section remains unchanged.

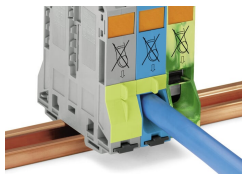


Removing jumper via operating tool.

### Cover

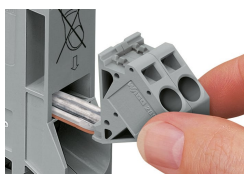


Protective warning marker may indicate: Notice: Power is still on even after switching off the main switch!

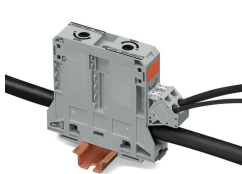


Yellow, detachable finger guards provide touch-proof safety by shielding jumper contact slots and/or unused conductor entries.

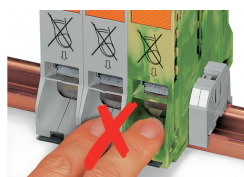
### Power tap



Easily and consistently tap directly into the power supply. Insert the unwired tap before opening the clamping unit.



### Security

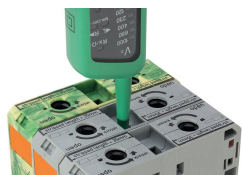


Risk of Injury!  
Do not insert fingers in the conductor entry!

### Testing

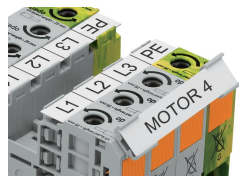


Testing via touch-proof 4 mm Ø test plugs (not available from WAGO, but offered by industry suppliers such as, Multi-Contact Deutschland GmbH).



Testing  
Voltage measurements can be performed, e.g., using a 2-pole voltage tester (Item No. 206-707).

Marking



WMB markers or self-adhesive, printable marking strips can be accommodated on 35, 50 and 95 mm<sup>2</sup> high-current terminal blocks.

Marker carrier (Item No. 285-442) for marking strips (Item No. 2009-110) or 2 WMB markers for 285-13x, 285-15x and 285-19x Terminal Blocks