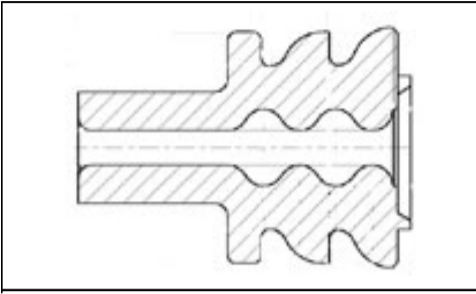


## 284863-1 Product Details

**Live Product Chat** US Only  
8:30am - 5pm ET, Mon - Fri



**284863-1**

✔ [Active](#)

### Timer Contacts

[Always EU RoHS/ELV Compliant](#) ([Statement of Compliance](#))

#### Product Highlights:

- Seal Plug
- Contact Type = Multiple Contact Point (MCP)
- Wire Range = 0.30-1.00<sup>2</sup> [22-17] mm [AWG]
- Insulation Diameter = 1.20 - 2.10 mm
- Single Wire Sealing System

[View all Features](#) | [Find Similar Products](#)

### Quick Links

[Check Pricing & Availability](#)  
[Search for Tooling](#)  
[Product Feature Selector](#)  
[Contact Us About This Product](#)

### Documentation & Additional Information

#### Product Drawings:

- None Available

#### Catalog Pages/Data Sheets:

- None Available

#### Product Specifications:

- None Available

#### Application Specifications:

- None Available

#### Instruction Sheets:

- None Available

#### CAD Files:

- None Available

#### Additional Information:

- [Product Line Information](#)

#### Additional Product Images:

- [Line Drawing](#)

#### Related Products:

- [Tooling](#)

### Product Features (Please use the Product Drawing for all design activity)

#### Product Type Features:

- [Product Type](#) = Seal Plug
- [Insulation Diameter \(mm \[in\]\)](#) = 1.20 - 2.10 [0.047 - 0.082]
- Tab Fit (mm [in]) = 2.79 x 0.81 [.110 x .032]
- Comment = For sealed product refer to insulation diameter for proper sizing.

#### Body Related Features:

- [Wire Range \(mm \[AWG\]\)](#) = 0.30-1.00<sup>2</sup> [22-17]
- Single Wire Sealing System = Yes
- Insulation Type = FLR
- Seal Material = Silicone

#### Contact Related Features:

- Contact Type = Multiple Contact Point (MCP)

#### Industry Standards:

- [RoHS/ELV Compliance](#) = RoHS compliant, ELV compliant
- [Lead Free Solder Processes](#) = Not relevant for lead free process
- RoHS/ELV Compliance History = Always was RoHS compliant

#### Packaging Related Features:

- [Packaging Method](#) = Loose Piece

#### Other:

- GET 0.64 Connector System = Yes
- Brand = AMP