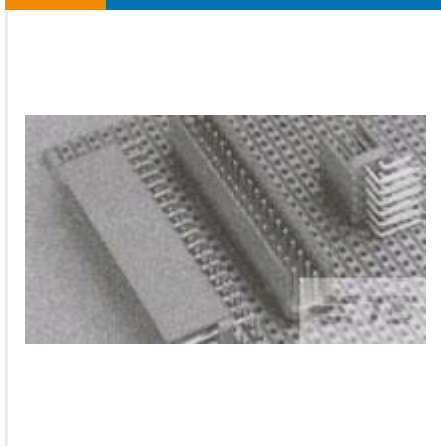




**CONNECTORS**

**MULTIPLE CONFIGURATION PCB HEADERS & RECEPTACLES**



✓ Active

TE CONNECTIVITY (TE)

## HEADER HE13 STRAIGHT 2X2 P

AMPMODU | AMPMODU

281740-2

TE Internal Number: 281740-2

EU RoHS Compliant

EU ELV Compliant

**Number of Positions** 4

**Centerline (Pitch)** 2.54 mm [ .1 in ]

**Connector & Contact Terminates To** Printed Circuit Board

**Connector Style** Plug

**Header Type** Shrouded

[↓ PRODUCT DRAWING](#)  
English

[↓ 3D PDF](#)

### DOCUMENTATION

Product Drawings

#### **HEADERS HE13, DOUBLE ROW, STRAIGHT**

PDF

**English**

CAD Files

#### **Customer View Model**

3D\_IGS.ZIP

**English**

#### **Customer View Model**

3D\_STP.ZIP

**English**

### Customer View Model

2D\_DXF.ZIP

English

### 3D PDF

PDF

English

### Customer View Model

2D\_DXF.ZIP

English

### 3D PDF

PDF

3D

### Customer View Model

3D\_IGS.ZIP

English

### Customer View Model

3D\_STP.ZIP

English

---

Product Specifications

Product Specification

### MODULAR HEADERS AND PLUGS ACCORDING TO IEC 60603-8 SERIES (HE13 HE14 SERIES)

PDF

French

---

## FEATURES



Please review product documents or [contact us](#) for the latest agency approval information.

Please Note: Use the Product Drawing for all design activity.

---

#### Product Type Features

**Connector & Contact Terminates To** Printed Circuit Board

**Connector Style** Plug

**Header Type** Shrouded

**PCB Mounting Orientation** Vertical

**Connector Type** Header

**Row-to-Row Spacing** 2.54 mm [.1 in]

**Gasket** Without

**Product Type** Connector

**Stabilizers** Without

**Board Standoff** Without

**Strain Relief** Without

---

#### Configuration Features

**Selectively Loaded** No

**Number of Positions** 4

**Number of Rows** 2

**Keyed** No

## Body Features

**Post Size** .64 mm [ .025 in ]

---

## Contact Features

**Solder Tail Contact Plating Material** Tin over Nickel

**Contact Protection** With

**Contact Shape** Square

**Contact Current Rating (Max) (A)** 3

**Contact Base Material** Phosphor Bronze

**Contact Mating Area Plating Thickness (µin)** 15

**Contact Type** Pin

**Contact Mating Area Plating Material** Gold

**Contact Protection Type** Shrouded

---

## Termination Features

**Termination Method to PC Board** Through Hole

**Termination Method to Wire/Cable** Crimp, Insulation Displacement Crimp (IDC)

**Termination End Plating Material** Tin-Lead

**Termination Post Length (mm)** 2.9

---

## Mechanical Attachment

**Panel Mount Retention** Without

**Mating Connector Lock** Without

**PCB Mounting Style** Through Hole

**Mating Alignment Type** Polarization

**PCB Mount Retention** Without

**Mating Alignment** Without

---

## Housing Features

**Centerline (Pitch)** 2.54 mm [ .1 in ]

**Housing Style** 2-Sided

**Housing Material** High Temperature Thermoplastic

**Housing Color** Blue

---

## Dimensions

**Shrouded End Dimension (mm)** 1.27

**Mating Post Length (mm)** 6.75

---

## Usage Conditions

**Operating Temperature Range (°C)** -55 – 105

---

## Industry Standards

**UL Flammability Rating** UL 94V-0

---

## Packaging Features

**Packaging Quantity** 100

**Packaging Method** Package

---

---

Statement of Compliance

**Statement of Compliance**

PDF

---