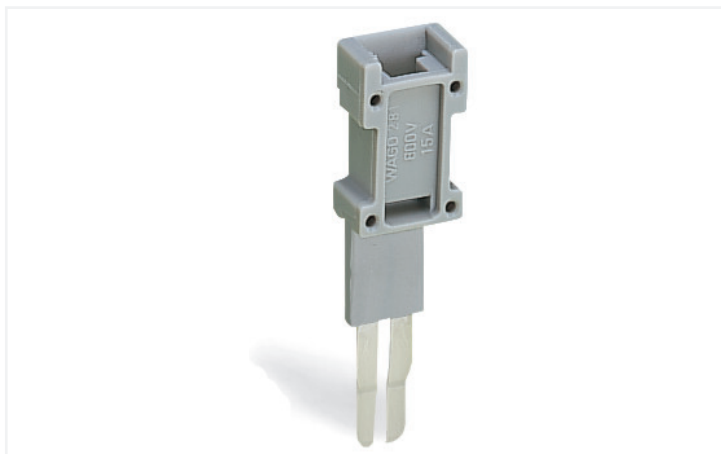


Data Sheet | Item Number: 281-418

Test plug module; modular; suitable for all WAGO 281, 776, 777 and 781 series rail-mounted terminal blocks with jumper slots in the current bar; gray

<https://www.wago.com/281-418>



Color: ■ gray

Notes

Safety information

These test plugs are not suitable for Ex e applications.

Electrical data

General information

Test voltage	400 V
Test current	6 A

Physical data

Width	6 mm / 0.236 inches
Module width	6 mm / 0.236 inches

Material data

Note (material data)

[Information on material specifications can be found here](#)

Color	gray
Material group	I
Insulation material	Polyamide (PA66)
Flammability class per UL94	V0
Fire load	0.17 MJ
Weight	1.9 g

Commercial data

Product Group	1 (Rail Mounted Terminal Blocks)
eCl@ss 10.0	27-14-11-48
eCl@ss 9.0	27-14-11-48
ETIM 8.0	EC002255
ETIM 7.0	EC002255
PU (SPU)	100 (25) pcs
Packaging type	Box
Country of origin	DE
GTIN	4044918276320
Customs tariff number	85366990990

Environmental Product Compliance

RoHS Compliance Status	Compliant, No Exemption
------------------------	-------------------------

Downloads

Environmental Product Compliance

Compliance Search

Environmental Product Compliance 281-418	↓
--	-------------------

Documentation

Additional Information		Bid Text				
Technical Section	pdf 2246.92 KB	↓	281-418	19.02.2019	xml 2.88 KB	↓
			281-418	28.04.2017	doc 23.50 KB	↓

CAD/CAE-Data

CAD data	CAE data
2D/3D Models 281-418	WSCAD Universe 281-418
↓	↓

1 Compatible Products

1.1 Optional Accessories

1.1.1 Test and measurement

1.1.1.1 Testing accessories

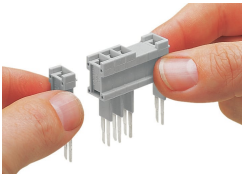


Item No.: 210-136

Test plug; 2 mm Ø; with 500 mm cable; red

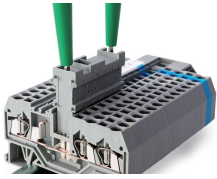
Installation Notes

Installation



Snapping test plug and spacer modules together to assemble a multipole test plug module.

Testing



Test plug modules are directly plugged into the jumper contact slot of the current bar.