



## Struthers-Dunn

407 East Smith Street, Suite B

Timmonsville, SC 29161

Telephone: (843)346-4427

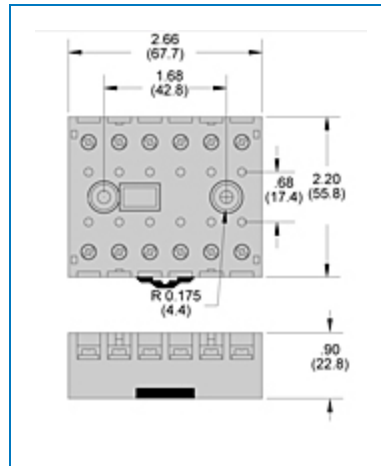
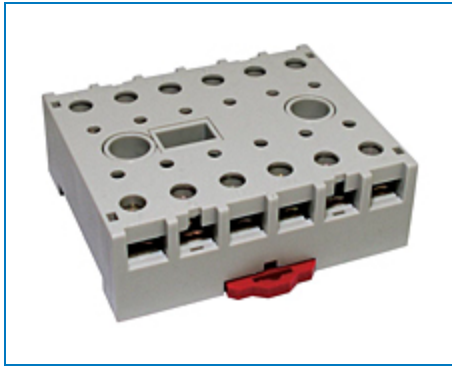
Fax: (843)346-4465

Email: [info@struthers-dunn.com](mailto:info@struthers-dunn.com)

Website: [www.struthers-dunn.com](http://www.struthers-dunn.com)

# Item # 27390D, Industrial 12 & 14 Pin Socket

These industrial style sockets offer front-connected wiring on one level with screw terminals accessible and numbered for ease in installation, wiring and checkout. Sockets are polarized. The mating relay has a locking clip that snaps into the socket, eliminating any need for external holding devices.



[Specifications](#) | [Construction](#) | [Electrical Rating](#) | [Temperature](#) | [Dielectric Strength](#) | [Miscellaneous](#)

## Specifications

### Style

12 Pin socket DIN / panel mount, with fingersafe non-removable screw terminals and clamping plates

### Weight

102 g

## Construction

<b>Protection Category (finger safe)</b>	IP20 IEC (D Series)
<b>Internal Metal Tracks</b>	Copper alloy, zinc plated
<b>Screws Terminals</b>	Steel, zinc plated
<b>Screw Style and Size</b>	Combination Head - M3.5x0.06x6.35MM
<b>Screw Terminals Torque Maximum</b>	9 lb-in, 1.01 Nm

## Electrical Rating

<b>Nominal Voltage Rating</b>	600 V
<b>Nominal Current Rating</b>	10 A

## Temperature

<b>Operating</b>	-40 to 80 °C
------------------	--------------

## Dielectric Strength

<b>Output to Adjacent Output Terminals</b>	2000
<b>Output to Input Terminals</b>	2000 Vrms
<b>Terminals to Rail Chassis</b>	2000 Vrms

## Miscellaneous

<b>Chassis Mount Screw Torque</b>	8- 10lb, 0.90 Nm
<b>Flammability Rating</b>	94V-0
<b>Wire Size</b>	20 -12 AWG, 0.5 - 3mm

**Body Color** Light grey

**Din Locking Clip Color** Red