

Datasheet

# RS Pro 1mm White Terminal Post

RS Stock No: 262-2040

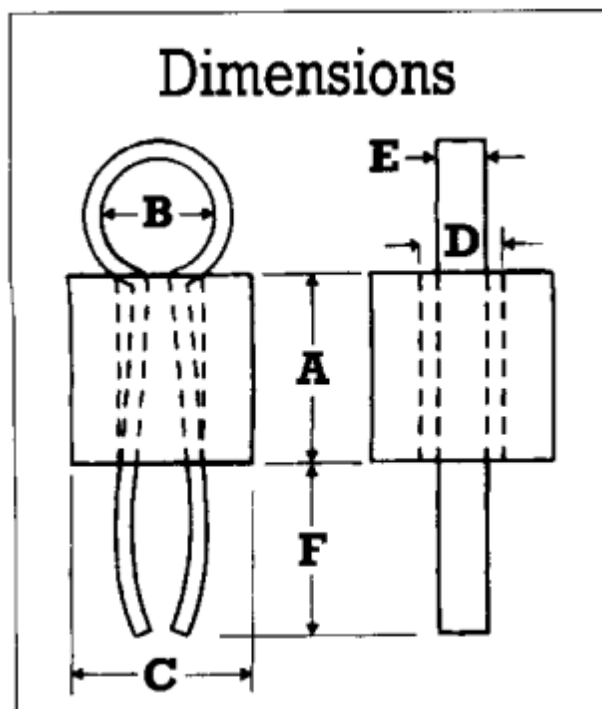


## Specifications:

- Bead: Boro Silicate Sintered Glass
- Tag: Phosphor Bronze BS 2873 Solder Tinned
- Coefficient of expansion is quoted for the range 50 – 300 degrees

## GLASS BEAD

COEFF	DENSITY	VISCOSITY POISE °C			LOG (OHM.CM)			DIELECTRIC PROPERTIES	
TERM. EXPN x 10 <sup>6</sup> /°C	g/cc	14.6	13	7.6	TR	DC. RESISTIVITY		AT 1 MHZ AT 20°C	
4.94	2.27	10	10	10	100	250°C	350°C	CONST	LOSS ANGLE
		475	515	719	365	10.1	8.2	5.7	0.003



A	3.05 - 3.30 mm
B	1.30 - 1.50 mm
C	2.21 - 2.47 mm
D	1.07 - 1.32 mm
E	0.5 mm
F	2.78 mm