

Series 300 - With Angle Bracket/Less Angle Bracket

[Print This Page](#)

Features | Part Numbers | Dimensions

Features

Solder lug terminals with .093 " x .062 " (2.36mm x 1.57mm) wiring holes.

- Two-contact "Jones" connector is round, all others are rectangular.
- For use in cable-to-panel and cable-to-cable applications.
- Designed for light and medium duty.
- Plug prongs are .156? (3.96mm) wide and .047? (1.19mm) thick.
- Polarized to prevent wrong-way insertion.
- Plugs have projecting flat blades, sockets have recessed twin bellows.
- Cable clamps of zinc and clear irridite-plated steel used for strain relief.
- RoHS version available
- UL Recognized-file E170218 (UL 1977), E130965 (UL1863).
- CSA-LR31996.

Materials

- Insulation Material:
- Molded monoblock, general purpose phenolic, black UL94V-1
- Contact Material:
- Plug: Brass Socket: Phosphor bronze
- Contact Plating: Cadmium - RoHS Matte Tin
- Operating Temperature: Up to +105°C
- Hood Material: UL 94V-0 rated thermoplastic

Electrical

- Operating Voltage: 250 VAC RMS maximum
- Current Rating: 10 Amps
- Contact Resistance: 16 Milliohms maximum

[back to top](#)

Part Numbers

Click on any part number to see it's current stock with our distributors.

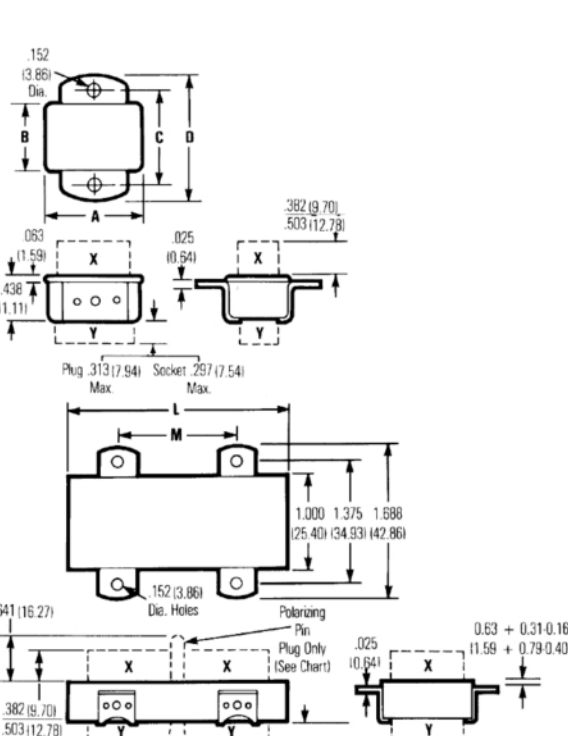
No. of Contacts	With Angle Bracket		Less Angle Bracket	
	Catalog #	Catalog #	Catalog #	Catalog #
2	P-302-AB	S-302-AB	P-302-LAB	S-302-LAB
3	P-303-AB	S-303-AB	P-304-LAB	S-303-LAB
4	P-304-AB	S-304-AB	P-304-LAB	S-304-LAB
6	P-306-AB	S-306-AB	P-306-LAB	S-306-LAB
15	P-315-AB	S-315-AB	P-315-LAB	S-315-LAB
18	P-318-AB	S-318-AB	P-318-LAB	S-318-LAB
21	P-321-AB	S-321-AB	P-321-LAB	S-321-LAB
24	P-324-AB	S-324-AB	P-324-LAB	S-324-LAB
27	P-327-AB	S-327-AB	P-327-LAB	S-327-LAB
30	DISCONTINUED	DISCONTINUED	DISCONTINUED	DISCONTINUED
33	P-333-AB	S-333-AB	P-333-LAB	S-333-LAB

RoHS

No. Of Contacts	With Angle Bracket		Less Angle Bracket	
	Catalog #	Catalog #	Catalog#	Catalog
2	P-302H-AB	S-302H-AB	P-302H-LAB	S-302H-LAB
3	P-303H-AB	S-303H-AB	P-303H-LAB	S-303H-LAB
4	P-304H-AB	S-304H-AB	P-304H-LAB	S-304H-LAB
6	P-306H-AB	S-306H-AB	P-306H-LAB	S-306H-LAB
Drawings	Plug Drawing w/Angle Bkt	Skt Drawing w/Angle Bkt.	Plug Drawing Less Angle Bkt	Skt Drawing Less Angle Bkt

[back to top](#)

Dimensions



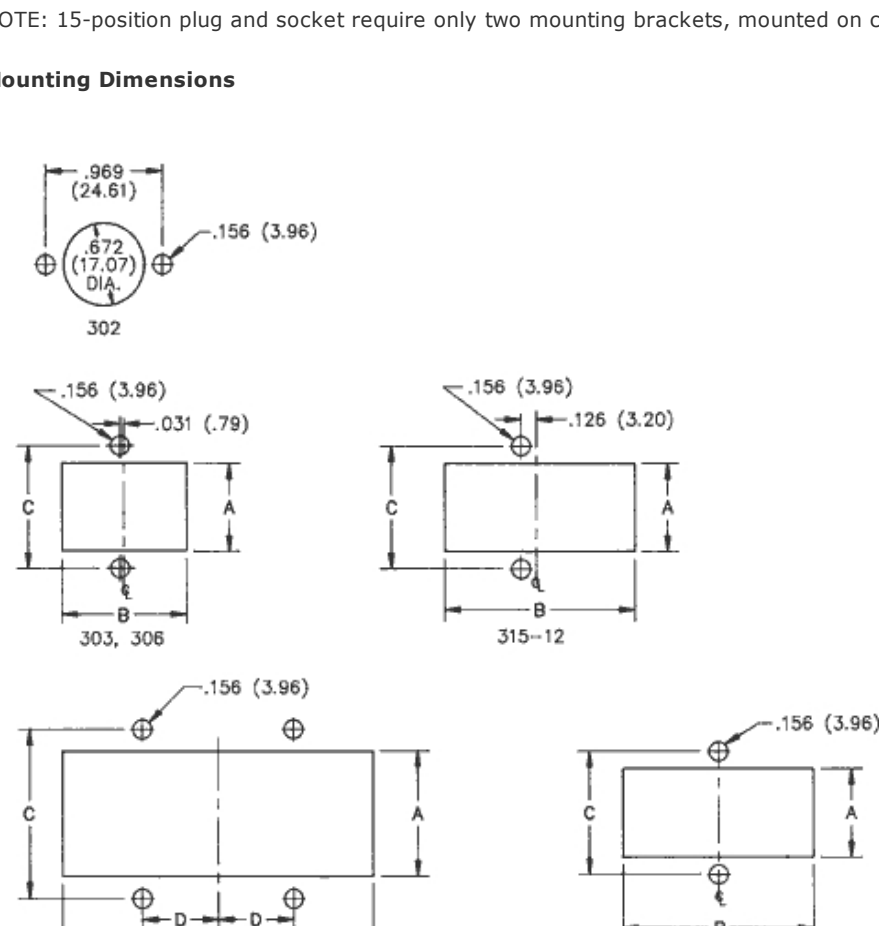
No. of Contacts	A		B		C		D	
	in	mm	in	mm	in	mm	in	mm
2	.656	16.67	-	-	.969	24.61	1.219	30.96
3	1.000	25.40	.438	11.11	.750	19.05	1.062	26.99
4	.750	19.05	.688	17.46	1.000	25.40	1.312	33.34
6	1.000	25.40	.688	17.46	1.000	25.40	1.312	33.34
8	-	-	-	-	-	-	-	-
10	1.562	39.69	.688	17.46	1.000	25.40	1.312	33.34
12	1.250	31.75	.938	23.81	1.250	31.75	1.562	39.69
15*	1.500	38.10	.938	23.81	1.250	31.75	1.562	39.69

* Special 15 contact arrangement to allow 12-position mating.

Reference	L		M		Polarizing Pin
	in	mm	in	mm	
15	1.625	41.28	See note	-	NO
18	1.938	49.23	1.250	31.75	NO
21	2.250	57.15	.938	23.81	NO
24	2.563	65.10	1.250	31.75	14
27	2.875	73.03	1.562	39.69	14
30	3.188	80.98	1.875	47.63	14
33	3.500	88.90	2.188	55.58	17

NOTE: 15-position plug and socket require only two mounting brackets, mounted on center of connector.

Mounting Dimensions

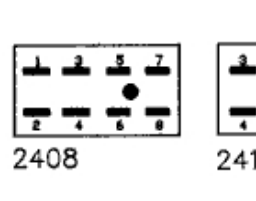
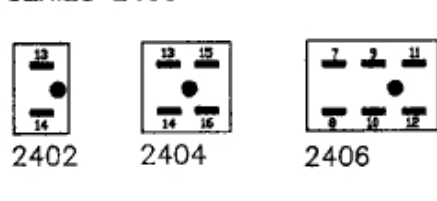
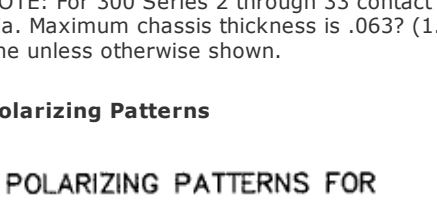


Reference	A		B		C		D	
	in	mm	in	mm	in	mm	in	mm
303	.453	11.51	1.016	25.81	.750	19.05	-	-
304	.719	18.26	.781	19.84	1.000	25.40	-	-
306	.719	18.26	1.031	26.19	1.000	25.40	-	-
308	.719	18.26	1.281	32.54	1.000	25.40	-	-
310	.719	18.26	1.578	40.08	1.000	25.40	-	-
312	.953	24.21	1.266	32.16	1.250	31.75	-	-
315-12	.953	24.21	1.516	38.51	1.250	31.75	-	-
315	1.016	25.81	1.641	41.68	1.375	34.93	-	-
318	1.016	25.81	1.953	49.61	1.375	34.93	.625	15.88
321	1.016	25.81	2.266	57.56	1.375	34.93	.469	11.91
324	1.016	25.81	2.578	65.48	1.375	34.93	.625	15.88
327	1.016	25.81	2.891	73.43	1.375	34.93	.781	19.84
330	1.016	25.81	3.203	81.36	1.375	34.93	.938	23.83
333	1.016	25.81	3.516	89.31	1.375	34.93	1.094	27.79

NOTE: For 300 Series 2 through 33 contact angle bracket connectors. All mounting holes are .156? (3.96mm) dia. Maximum chassis thickness is .063? (1.59mm) for bottom mounting. Mounting holes are located on center line unless otherwise shown.

Polarizing Patterns

POLARIZING PATTERNS FOR SERIES 2400



[back to top](#)

[Print This Page](#)

Barrier Blocks