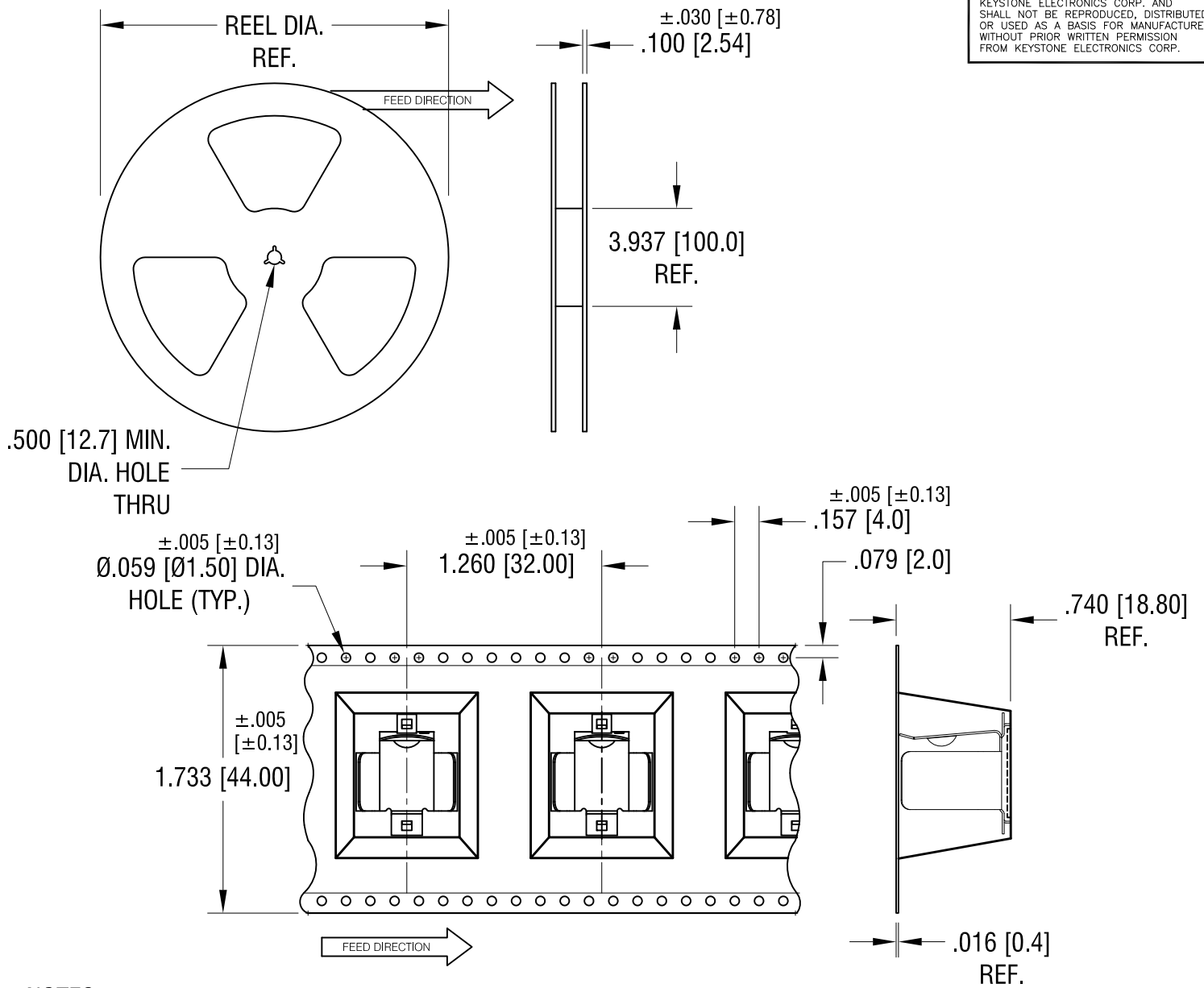


THIS DOCUMENT IS THE PROPERTY OF KEYSTONE ELECTRONICS CORP. AND SHALL NOT BE REPRODUCED, DISTRIBUTED OR USED AS A BASIS FOR MANUFACTURE WITHOUT PRIOR WRITTEN PERMISSION FROM KEYSTONE ELECTRONICS CORP.



**NOTES:**

**TAPE AND REEL SPECIFICATIONS:**

**1. TAPE:**

MAT'L - ALL CONDUCTIVE POLYSTYRENE CARRIER  
ANSI/EIA-481 STANDARD

**2. REEL:**

15.0 [380.8] DIA. 75 PIECES  
OF PART NO. 254 PER REEL.

9.20.18 ROTATE POCKET ON 180°  
CHANGE AS PER ECN 18-036

A  
REV.

|                                                                |                 |        |              |
|----------------------------------------------------------------|-----------------|--------|--------------|
| <b>KEYSTONE ELECTRONICS CORP.</b>                              |                 |        |              |
| www.keyelco.com • NEW HYDE PARK, NY 11040 • Tel (516) 328-7500 |                 |        |              |
| PART NAME                                                      |                 |        |              |
| BATTERY HOLDER ON TAPE AND REEL                                |                 |        |              |
| MATERIAL                                                       |                 |        |              |
| AS NOTED                                                       |                 |        |              |
| FINISH                                                         |                 | DRN BY | DATE         |
| AS NOTED                                                       |                 | NT     | 3.01.18      |
|                                                                |                 | APP'D  | SCALE        |
|                                                                |                 | LN     | X            |
| TOLERANCES                                                     | INCH [MM]       | CODE   | DWG NO.      |
| DECIMAL                                                        | ± .015 [± 0.38] | C      | <b>254TR</b> |
| ANGULAR                                                        | ± 1°            |        |              |
| UNLESS OTHERWISE SPECIFIED                                     |                 |        |              |

| DATE | DESCRIPTION | REV. |
|------|-------------|------|
|      |             |      |