

AFS 2.5 CF 2C 24V BK**Weidmüller Interface GmbH & Co. KG**

Klingenbergstraße 26

D-32758 Detmold

Germany

www.weidmueller.com

Product image

In some applications it is useful to protect the feed through connection with a separate fuse. Fuse terminal blocks are made up of one terminal block bottom section with a fuse insertion carrier. The fuses vary from pivoting fuse levers and pluggable fuse holders to screwable closures and flat plug-in fuses.

General ordering data

| | |
|------------|---|
| Version | Fuse terminal, PUSH IN, 2.5 mm ² , 24 V, 10 A, black |
| Order No. | 2466600000 |
| Type | AFS 2.5 CF 2C 24V BK |
| GTIN (EAN) | 4050118480726 |
| Qty. | 50 pc(s). |

Creation date January 23, 2023 10:30:30 AM CET

Catalogue status 09.01.2023 / We reserve the right to make technical changes.

AFS 2.5 CF 2C 24V BK

Weidmüller Interface GmbH & Co. KG

Klingenbergstraße 26

D-32758 Detmold

Germany

www.weidmueller.com

Technical data

Dimensions and weights

| | | | |
|--------------------------|------------|----------------|------------|
| Depth | 37.65 mm | Depth (inches) | 1.482 inch |
| Depth including DIN rail | 38.4 mm | Height | 77.5 mm |
| Height (inches) | 3.051 inch | Width | 5.1 mm |
| Width (inches) | 0.201 inch | Net weight | 9.52 g |

Temperatures

| | | | |
|----------------------------------|----------------|----------------------------------|--------|
| Storage temperature | -25 °C...55 °C | Continuous operating temp., min. | -60 °C |
| Continuous operating temp., max. | 130 °C | | |

Material data

| | | | |
|----------|-------|--------|-------|
| Material | Wemid | Colour | black |
|----------|-------|--------|-------|

System specifications

| | | | |
|-------------------------------------|----------|-------------------------------|-------|
| Version | with LED | End cover plate required | Yes |
| Number of potentials | 1 | Number of levels | 1 |
| Number of clamping points per level | 2 | Number of potentials per tier | 1 |
| PE connection | No | Rail | TS 35 |
| N-function | No | PE function | No |
| PEN function | No | | |

Additional technical data

| | | | |
|---------------------|-------|-------------------|---------|
| Installation advice | Rail | Open sides | right |
| Snap-on | No | Type of fixing | Snap-on |
| Type of mounting | TS 35 | With snap-in pegs | No |

CSA rating data

| | | | |
|-------------------------------|-----------------|-------------------------------|--------|
| Certificate No. (CSA) | 200039-70089609 | Current size B (CSA) | 16 A |
| Current size C (CSA) | 16 A | Voltage size B (CSA) | 300 V |
| Voltage size C (CSA) | 300 V | Wire cross section max. (CSA) | 12 AWG |
| Wire cross section min. (CSA) | 28 AWG | | |

Conductors for clamping (rated connection)

| | | | |
|--|--|------|----------------------|
| Blade size | 0.6 x 3.5 mm | | |
| Clamping range, max. | 4 mm ² | | |
| Clamping range, min. | 0.14 mm ² | | |
| Connection cross-section, stranded, max. | 2.5 mm ² | | |
| Connection cross-section, stranded, min. | 0.5 mm ² | | |
| Connection direction | top | | |
| Gauge to IEC 60947-1 | A3 | | |
| Number of connections | 2 | | |
| Stripping length | 10 mm | | |
| Tube length for twin wire-end ferrule | Cross-section for conductor connection | min. | 0.5 mm ² |
| | | max. | 0.75 mm ² |
| | Tube length | max. | 12 mm |
| | | min. | 8 mm |

AFS 2.5 CF 2C 24V BK

Weidmüller Interface GmbH & Co. KG
 Klingenbergstraße 26
 D-32758 Detmold
 Germany

www.weidmueller.com

Technical data

| | | | |
|---|--|---------------------|----------------------|
| Tube length for wire-end ferrule with plastic collar DIN 46228/4 | Tube length | max. | 6 mm |
| | | min. | 8 mm |
| | Cross-section for conductor connection | min. | 0.34 mm ² |
| | | max. | 0.14 mm ² |
| | Tube length | max. | 6 mm |
| | | min. | 12 mm |
| Cross-section for conductor connection | min. | 1 mm ² | |
| | max. | 0.5 mm ² | |
| Tube length | max. | 8 mm | |
| | min. | 12 mm | |
| | Cross-section for conductor connection | min. | 2.5 mm ² |
| | | max. | 1.5 mm ² |
| Tube length for wire-end ferrule without plastic collar DIN 46228/1 | Tube length | nominal | 5 mm |
| | Cross-section for conductor connection | nominal | 0.25 mm ² |
| | Tube length | max. | 10 mm |
| | | min. | 6 mm |
| | Cross-section for conductor connection | min. | 0.5 mm ² |
| | | max. | 1 mm ² |
| Tube length | max. | 12 mm | |
| | min. | 7 mm | |
| Cross-section for conductor connection | min. | 1.5 mm ² | |
| | | max. | 4 mm ² |
| Twin wire-end ferrules, max. | 0.75 mm ² | | |
| Twin wire-end ferrules, min. | 0.5 mm ² | | |
| Type of connection | PUSH IN | | |
| Wire connection cross section AWG, max. | AWG 12 | | |
| Wire connection cross section AWG, min. | AWG 28 | | |
| Wire connection cross section, finely stranded, max. | 2.5 mm ² | | |
| Wire connection cross section, finely stranded, min. | 0.5 mm ² | | |
| Wire connection cross-section, finely stranded with wire-end ferrules DIN 46228/1, max. | 2.5 mm ² | | |
| Wire connection cross-section, finely stranded with wire-end ferrules DIN 46228/1, min. | 0.5 mm ² | | |
| Wire connection cross-section, finely stranded with wire-end ferrules DIN 46228/4, max. | 2.5 mm ² | | |
| Wire connection cross-section, finely stranded with wire-end ferrules DIN 46228/4, min. | 0.5 mm ² | | |
| Wire connection cross-section, solid core, max. | 2.5 mm ² | | |
| Wire connection cross-section, solid core, min. | 0.5 mm ² | | |

Fuse terminals

| | | | |
|--------------------------------|-----------|-----------------------|---------|
| Cartridge fuse | mini fuse | Display | Red LED |
| Fuse holder (cartridge holder) | Pivoting | Leakage current, max. | 0.5 mA |

AFS 2.5 CF 2C 24V BK

Weidmüller Interface GmbH & Co. KG

Klingenbergstraße 26

D-32758 Detmold

Germany

www.weidmueller.com

Technical data

General

| | | | |
|---|----------------------------------|---|--------|
| Installation advice | Rail | Rail | TS 35 |
| Standards | In accordance with IEC 60947-7-3 | Wire connection cross section AWG, max. | AWG 12 |
| Wire connection cross section AWG, min. | AWG 28 | | |

Rating data

| | | | |
|--|---------------------|---|----------------------------------|
| Rated cross-section | 2.5 mm ² | Rated voltage | 24 V |
| Rated voltage to adjoining terminal | 500 V | Rated current | 10 A |
| Current at maximum wires | 10 A | Standards | In accordance with IEC 60947-7-3 |
| Volume resistance according to IEC 60947-7-x | 1.33 mΩ | Power loss in accordance with IEC 60947-7-x | 0.77 W |
| Pollution severity | 3 | Surge voltage category | III |

UL rating data

| | | | |
|--|--------|--|--------|
| Certificate No. (cURus) | E60693 | Conductor size Factory wiring max. (cURus) | 12 AWG |
| Conductor size Factory wiring min. (cURus) | 28 AWG | Conductor size Field wiring max. (cURus) | 12 AWG |
| Conductor size Field wiring min. (cURus) | 28 AWG | Current size B (cURus) | 16 A |
| Current size C (cURus) | 16 A | Current size D (cURus) | 10 A |
| Voltage size B (cURus) | 300 V | Voltage size C (cURus) | 300 V |
| Voltage size D (cURus) | 300 V | | |

Classifications

| | | | |
|-------------|-------------|-------------|-------------|
| ETIM 6.0 | EC000899 | ETIM 7.0 | EC000899 |
| ETIM 8.0 | EC000899 | ECLASS 9.0 | 27-14-11-16 |
| ECLASS 9.1 | 27-14-11-16 | ECLASS 10.0 | 27-14-11-16 |
| ECLASS 11.0 | 27-14-11-16 | ECLASS 12.0 | 27-14-11-16 |

Approvals

Approvals



| | |
|-------------------------|------------|
| UL File Number Search | UL Website |
| Certificate No. (cURus) | E60693 |

AFS 2.5 CF 2C 24V BK**Weidmüller Interface GmbH & Co. KG**

Klingenbergstraße 26

D-32758 Detmold

Germany

www.weidmueller.com**Technical data****Downloads**

| | |
|---|---|
| Approval/Certificate/Document of Conformity | DE PT0102 2017 1010 042 ISSUE01.pdf EAC certificate DNVGL certificate MARITREG certificate UKCA Declaration of Conformity UKCA Declaration of Conformity UKCA declaration of conformity |
| Engineering Data | CAD data – STEP |
| Tender specification | Klippon® Connect 2466600000 EN Klippon® Connect 2466600000 DE |
| User Documentation | StorageConditionsTerminalBlocks BPZL AFS |
| Catalogues | Catalogues in PDF-format |

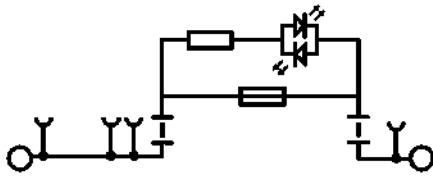
Data sheet

AFS 2.5 CF 2C 24V BK

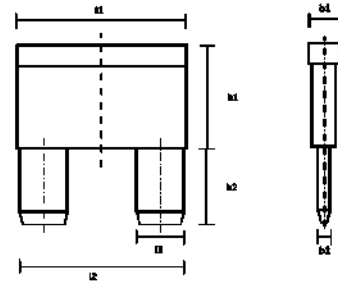
Weidmüller Interface GmbH & Co. KG
 Klingenbergstraße 26
 D-32758 Detmold
 Germany

www.weidmueller.com

Drawings



DIN 72581-9:2001-03



| k1 | k2 | k3 | k4 | k5 | Ø | Ø |
|----|------|----|-----|----|------|-----|
| mm | mm | mm | mm | mm | mm | mm |
| 4 | 0.58 | 5 | 7.5 | 12 | 30.5 | 2.8 |