

# High Frequency Ceramic Solutions

## 2.45 GHz Band Pass Filter

P/N 2450BP39D100E

Detail Specification: 3/29/2012

Page 1 of 2

### General Specifications

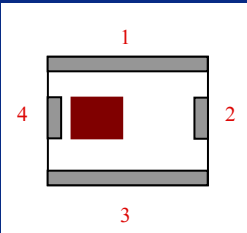
Part Number	2450BP39D100E	
Frequency (MHz)	2400 - 2500	
Insertion Loss	1.2 dB max.	
Return Loss	9.5 dB min.	
Attenuation (min.)	880 ~ 915MHz	30 dB
Attenuation (min.)	1710 ~ 1785MHz	30 dB
Attenuation (min.)	1850 ~ 1910MHz	25 dB
Attenuation (min.)	2700MHz	2 dB
Attenuation (min.)	4800 ~ 5000MHz	25 dB
Attenuation (min.)	7200 ~ 7500MHz	15 dB

Input Power	500 mW max.
Impedance	50 $\Omega$
Reel Quantity	3,000
Operating Temperature	-40 to +85°C
Recommended Storage Conditions	+5 to +35°C, Humidity 45-75%RH, 18 mos. max*

\*18 months in vacuum sealed bag and 1 week after opened. Go to: [www.johansontechnology.com/silverleads](http://www.johansontechnology.com/silverleads) for details

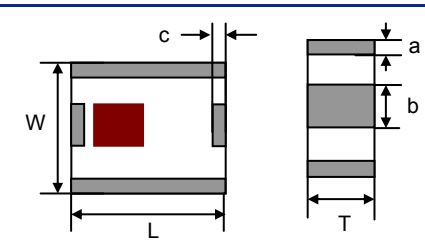
### Terminal Configuration

No.	Function
1	GND
2	OUT
3	GND
4	IN



### Mechanical Dimensions

	In	mm
L	0.098 ± 0.008	2.50 ± 0.20
W	0.079 ± 0.008	2.00 ± 0.20
T	0.037 ± 0.004	0.95 ± 0.10
a	0.012 ± 0.008	0.30 ± 0.20
b	0.024 ± 0.008	0.60 ± 0.20
c	0.012 ± 0.008	0.30 ± 0.20

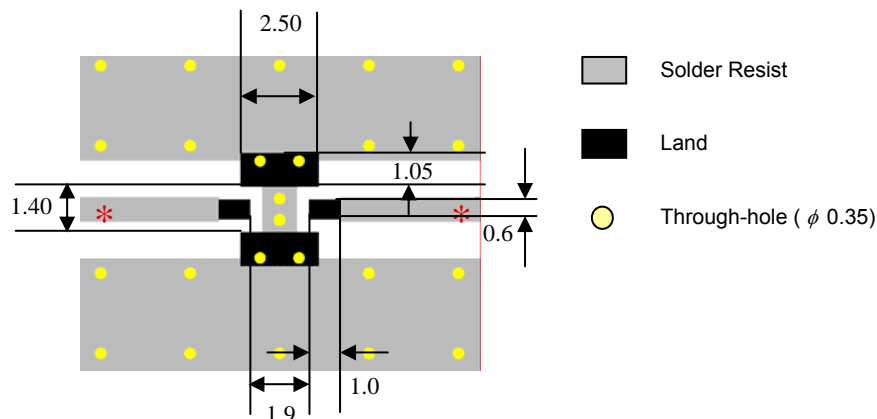


### Mounting Considerations

Mount these devices with brown mark facing up.

\* Line width should be designed to provide 50  $\Omega$  impedance matching characteristics.

Units: mm



Johanson Technology, Inc. reserves the right to make design changes without notice.

All sales are subject to Johanson Technology, Inc. terms and conditions.



[www.johansontechnology.com](http://www.johansontechnology.com)

4001 Calle Tecate • Camarillo, CA 93012 • TEL 805.389.1166 FAX 805.389.1821

2012 Johanson Technology, Inc. All Rights Reserved

# High Frequency Ceramic Solutions

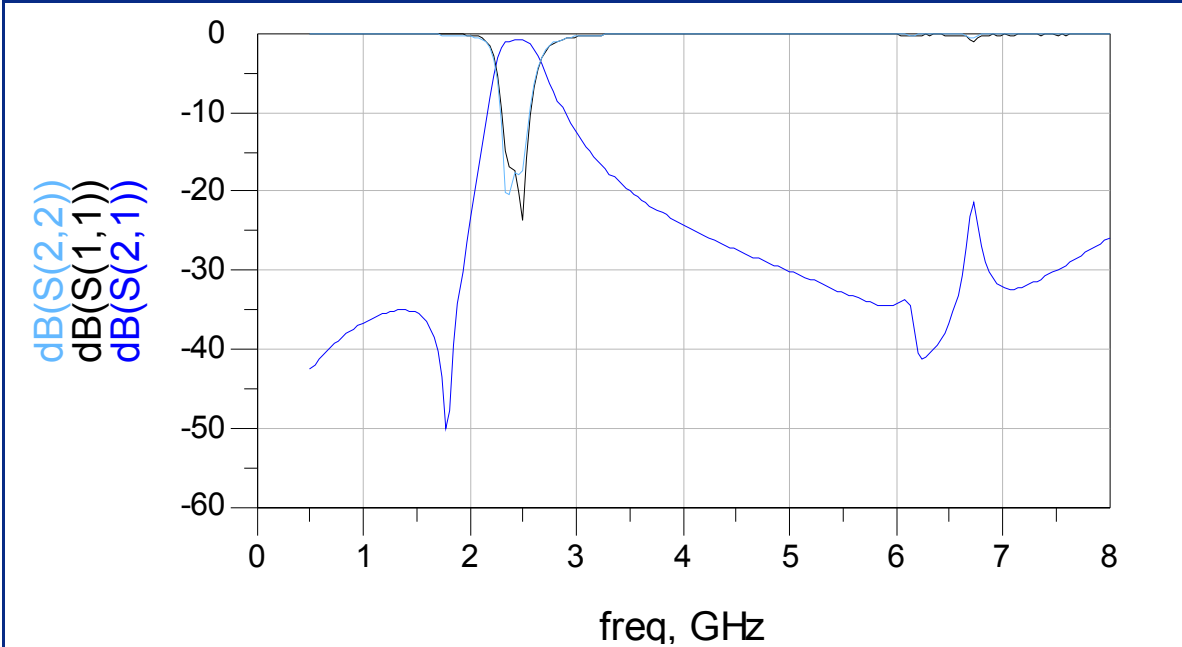
## 2.45 GHz Band Pass Filter

P/N 2450BP39D100E

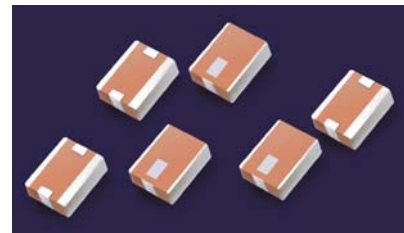
Detail Specification: 3/29/2012

Page 2 of 2

### Typical Electrical Performance (T=25°C)



P/N	Packaging Style	Bulk	Suffix = S	Eg. 2450BP39D100ES
		T & R (3000pcs)	Suffix = E	Eg. 2450BP39D100EE
Suffix	Termination Style	100% Tin	Suffix = None	Eg. 2450BP39D100E(E or S)
	Evaluation Board	2450BP39D100E-EB-SMA		



Johanson Technology, Inc. reserves the right to make design changes without notice.

All sales are subject to Johanson Technology, Inc. terms and conditions.



[www.johansontechnology.com](http://www.johansontechnology.com)  
4001 Calle Tecate • Camarillo, CA 93012 • TEL 805.389.1166 FAX 805.389.1821

2012 Johanson Technology, Inc. All Rights Reserved