

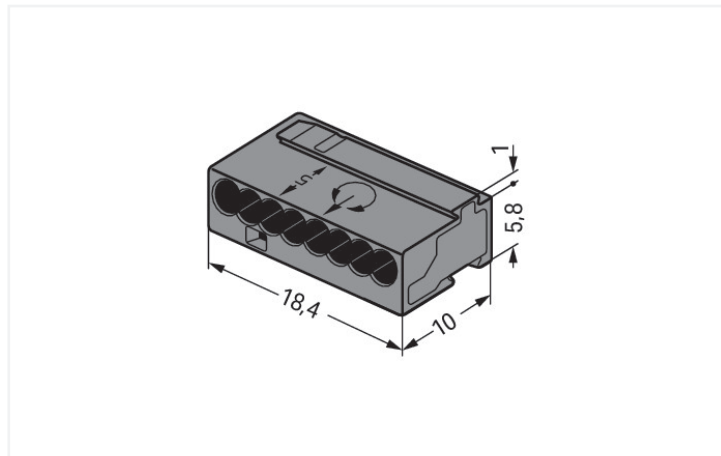
Data Sheet | Item Number: 243-208

PUSH WIRE® splicing connector; for solid conductors; max. 0.8 mm Ø; 8-conductor; dark gray housing; light gray cover; Surrounding air temperature: max 60°C; dark gray

<https://www.wago.com/243-208>



Color: ■ dark gray



Dimensions in mm

Notes

Safety management note

NOTICE: Observe installation and safety instructions!

- **Only to be used by electricians!**
- Do not work under voltage/load!
- Use only for proper use!
- Observe national regulations/standards/guidelines!
- Observe technical specifications for the products!
- Observe the number of permissible potentials!
- Do not use damaged/dirty components!
- Observe conductor types, cross-sections and strip lengths!
- Insert conductor until it hits the product's backstop!
- Use original accessories!

To be sold only with installation instructions!

Electrical data

| Ratings per | EN 60664 | | |
|----------------------|----------|-----|--------|
| Overvoltage category | III | III | II |
| Pollution degree | 3 | 2 | 2 |
| Nominal voltage | - | - | 100 V |
| Rated surge voltage | - | - | 1.5 kV |
| Rated current | - | - | 6 A |

Connection data

| | |
|----------------------------|---|
| Clamping units | 8 |
| Total number of potentials | 1 |
| Number of connection types | 1 |
| Number of levels | 1 |

Connection 1

| | |
|---------------------------------|---|
| Connection technology | PUSH WIRE® |
| Actuation type | Push-in |
| Connectable conductor materials | Copper |
| Solid conductor | 22 ... 20 AWG |
| Conductor diameter | 0.6 ... 0.8 mm / 22 ... 20 AWG |
| Conductor diameter (note) | When using conductors of the same diameter, 0.5 mm (24 AWG) or 1 mm (18 AWG) diameters are also possible. |
| Strip length | 5 ... 6 mm / 0.2 ... 0.24 inches |
| Wiring direction | Side-entry wiring |

Physical data

| | |
|--------|------------------------|
| Width | 18.4 mm / 0.724 inches |
| Height | 6.8 mm / 0.268 inches |
| Depth | 10 mm / 0.394 inches |

Material data

| | |
|----------------------|--|
| Note (material data) | Information on material specifications can be found here |
| Color | dark gray |
| Cover color | light gray |
| Fire load | 0.019 MJ |
| Weight | 1.4 g |

Environmental requirements

| | |
|----------------------------------|--------|
| Ambient temperature (operation) | +60 °C |
| Continuous operating temperature | 105 °C |

Commercial data

| | |
|-----------------------|---------------|
| eCl@ss 10.0 | 27-14-11-04 |
| eCl@ss 9.0 | 27-14-11-04 |
| ETIM 9.0 | EC000446 |
| ETIM 8.0 | EC000446 |
| PU (SPU) | 500 (50) pcs |
| Packaging type | Box |
| Country of origin | DE |
| GTIN | 4044918502634 |
| Customs tariff number | 85369010000 |

Environmental Product Compliance

| | |
|------------------------|-------------------------|
| RoHS Compliance Status | Compliant, No Exemption |
|------------------------|-------------------------|

Approvals / Certificates

General approvals



| Approval | Standard | Certificate Name |
|---------------------------------------|----------|------------------|
| CCA DEKRA Certification B.V. | EN 60998 | NTR NL 7812 |
| CSA DEKRA Certification B.V. | C22.2 | 70048857 |
| KEMA/KEUR DEKRA Certification B.V. | EN 60998 | 71-112493 |
| UR Underwriters Laboratories Inc. | UL 1059 | E45172 |

Declarations of conformity and manufacturer's declarations

| Approval | Standard | Certificate Name |
|--|----------|------------------|
| EU-Declaration of Conformity WAGO GmbH & Co. KG | - | - |
| UK-Declaration of Conformity WAGO GmbH & Co. KG | - | - |

Approvals for marine applications



| Approval | Standard | Certificate Name |
|---|----------|------------------|
| ABS American Bureau of Ship- ping | - | 18-HG1755093-PDA |
| LR Lloyds Register | EN 60998 | LR22207029TA |

Downloads

Environmental Product Compliance

| Compliance Search |
|--|
| Environmental Product Compliance 243-208 |

Documentation

| Bid Text | | | |
|----------------------------|------------|-----------------|--|
| 243-208 | 19.02.2019 | xml 3.27 KB | |
| 243-208 | 17.05.2017 | doc 25.00 KB | |
| ausschreiben.de 243-208 | | | |

CAD/CAE-Data

| CAD data |
|----------------------|
| 2D/3D Models 243-208 |

| CAE data |
|------------------------------|
| EPLAN Data Portal 243-208 |
| WSCAD Universe 243-208 |

1 Compatible Products

1.1 Optional Accessories

1.1.1 Marking

1.1.1.1 Marking strip



Item No.: 210-332/575-103
 Marking strips; as a DIN A4 sheet; MAR-
 KED; 1-12 (160x); Height of marker strip: 3
 mm; Strip length 182 mm; Horizontal mar-
 king; Self-adhesive; white

1.1.2 Mounting adapter

1.1.2.1 Mounting accessories



Item No.: 243-112

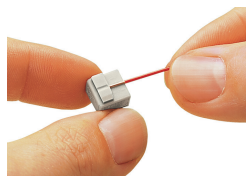
Mounting carrier; for 4 connectors; 243 Series; for DIN-35 rail mounting/screw mounting; orange

Item No.: 243-113

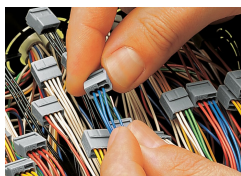
Mounting carrier; for 6 connectors; 243 Series; for DIN-35 rail mounting/screw mounting; orange

Installation Notes

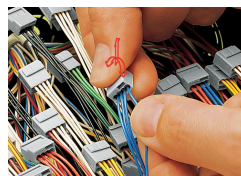
Conductor termination



Strip solid conductors to 5 ... 6 mm (0.19 ... 0.23 inch).



Termination: Insert the stripped solid conductor until it hits the backstop.



Removal: Hold conductor to be removed and twist alternately left and right while pulling the connector.

Installation



Connector strips:

Assembling modular connectors into connector strips.

Commoning



Commoned connector strips

Testing



Testing via test port opposite to conductor entry.



The 243 Series can be used in both communication and alarm systems according to the VdS (German Association of Property Insurers) guidelines.

No general approval is given to PUSH WIRE® connectors by the VdS association. The connectors must be tested together with the different parts of the system. The requirements for connectors are specified in the VdS guidelines for junction boxes (VdS 2116) in section 8.7: "The junction box connectors must be designed to guarantee a reliable and stable connection."

The verification of the fulfillment of these requirements is documented in the VDE test report No. 2574-1440-4031 for the insulated 243 Series PUSH WIRE® Connectors.