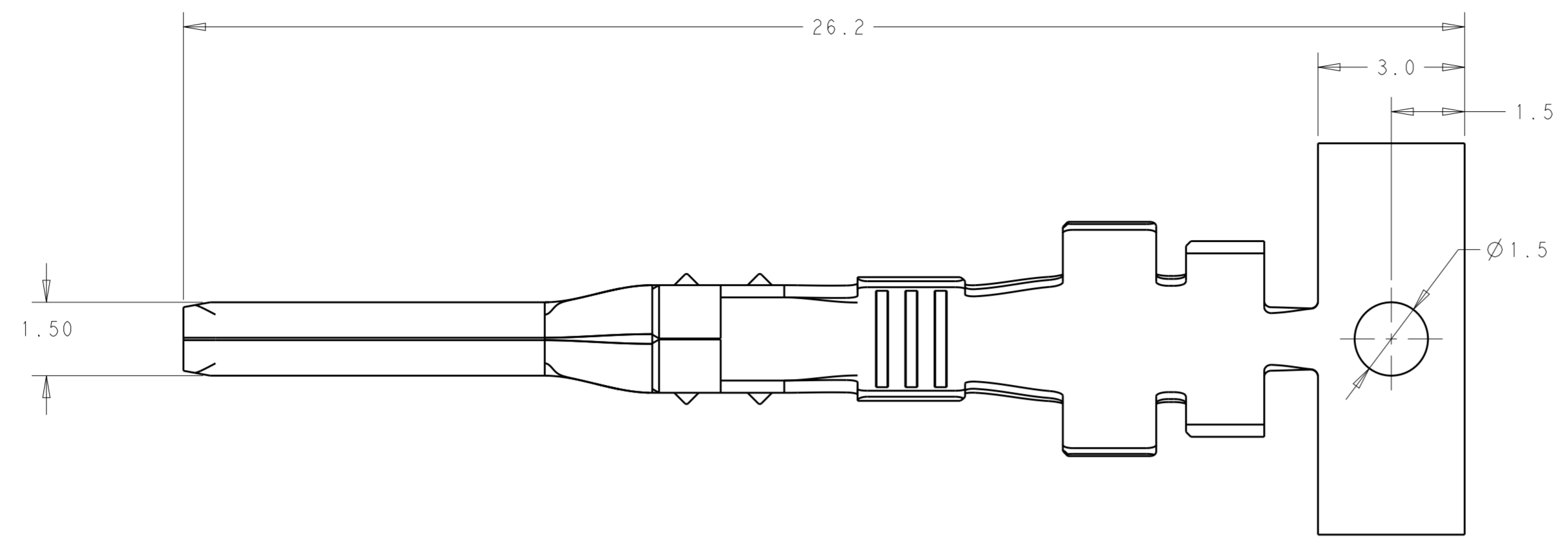
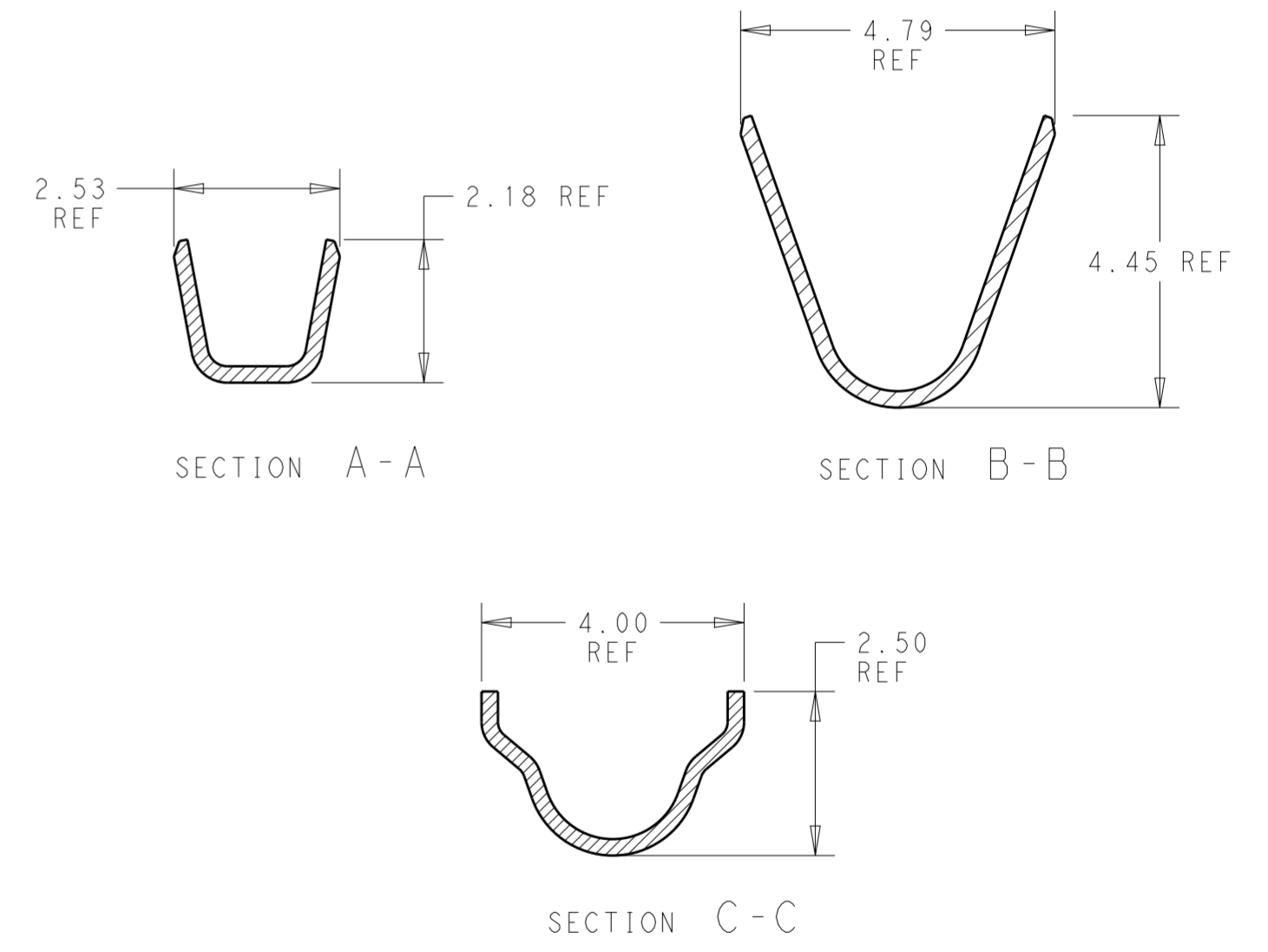
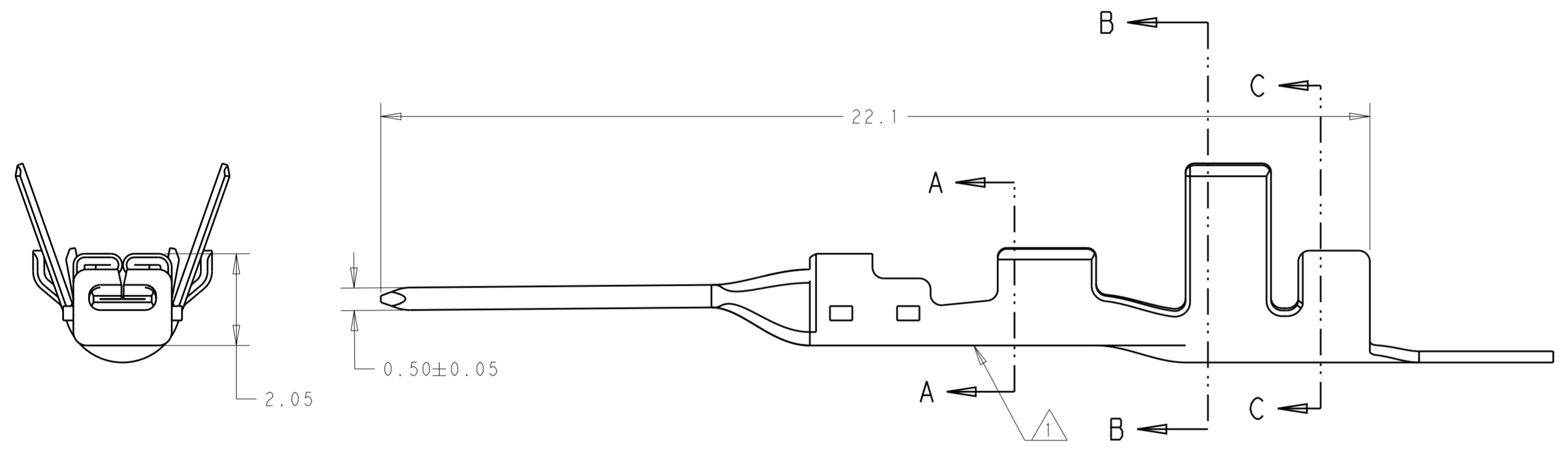


THIS DRAWING IS UNPUBLISHED. RELEASED FOR PUBLICATION 2017
 © COPYRIGHT 2017 BY - TE CONNECTIVITY ALL RIGHTS RESERVED.

REVISIONS					
P	LTR	DESCRIPTION	DATE	DWN	APVD
A		RELEASED PER ECO-18-020025	26DEC2018	BKW	GJ
A1		REVISED PER ECO-19-002431	15FEB2019	BKW	GJ
A2		REVISED PER ECO-19-013371	29AUG2019	BKW	GJ
A3		REVISED PER ECR-20-100211	05AUG2020	JP	VS



- 1 MATERIAL MARK
- 2. RECOMMENDED WIRE RANGE:
18-20 AWG COPPER STRANDED &
2x22 AWG COPPER STRANDED
- 3. INSULATION DIAMETER RANGE:
18-20 AWG - 1.7~2.8
2x22 AWG - 1.6~2.3
- 4. SUPPLIED CONTINUOUS ON A REEL
- 5 PRELIMINARY - NOT FOR PRODUCTION



M0	HIGH CONDUCTIVE COPPER ALLOY	HIGH TEMP (140°C)	5 2329906-2
M1	BRASS	STANDARD TEMP. (105°C)	2329906-1
MATERIAL MARK 1	MATERIAL	TEMPERATURE RATING	PART NUMBER

THIS DRAWING IS A CONTROLLED DOCUMENT.		DWN 26MAR2018 BASAVARAJA D A	STE TE Connectivity	
		CHK 26MAR2018 S. FERNANDES		
DIMENSIONS: mm		APVD 26MAR2018 C YI	NAME POWER VERSA-LOCK TAB TERMINAL UNSEALED 18-20 AWG, 2x22 AWG	
TOLERANCES UNLESS OTHERWISE SPECIFIED:		PRODUCT SPEC 108-143081	RESTRICTED TO	
0 PLC ±		APPLICATION SPEC 114-143082	SIZE A2	CAGE CODE -
1 PLC ±0.40		WEIGHT -	DRAWING NO C-2329906	SHEET 1 OF 1
2 PLC ±0.30			SCALE 10:1	REV A3
3 PLC ±				
4 PLC ±				
ANGLES ±3°				
FINISH -				
MATERIAL -				
SEE TABLE PRE-PLATED Sn		CUSTOMER DRAWING		