

2299940-5 ✓ ACTIVE



zQSFP+/QSFP28

TE Internal #: 2299940-5

zQSFP+, Cage Assembly with Integrated Connector, .032in [.8mm]
Centerline, Signal, Operating Temperature Range -40 – 85 °C [-40 – 185 °F]

[View on TE.com >](#)

Connectors > Pluggable IO Connectors & Cages



Pluggable I/O Product Type: **Cage Assembly with Integrated Connector**

Centerline (Pitch): **.8 mm [.032 in]**

Sealable: **No**

Circuit Application: **Signal**

Operating Temperature Range: **-40 – 85 °C [-40 – 185 °F]**

Features

Product Type Features

Thermal Accessory Type Included	Heat Sink
Cage Type	Stacked
Pluggable I/O Product Type	Cage Assembly with Integrated Connector
Sealable	No
Form Factor	zQSFP+

Configuration Features

Number of Rear EONs per Port Column	3
Number of Positions	76
Number of Ports	2
Port Matrix Configuration	2 x 1

Electrical Characteristics

Data Rate (Max)	25 Gb/s
-----------------	---------

Body Features

Heat Sink Finish	Anodized Black
------------------	----------------



Heat Sink Height	6.77 mm[.266 in]
Heat Sink Height Class	Custom
Heat Sink Style	Fin
Contact Features	
Contact Mating Area Plating Material Thickness	30 µm[.76 µin]
Contact Mating Area Plating Material	Gold
Contact Underplating Material	Tin
PCB Contact Termination Area Plating Material	Gold
Contact Current Rating (Max)	.5 A
Termination Features	
Termination Post & Tail Length	2 mm[.079 in]
Termination Method to Printed Circuit Board	Through Hole - Press-Fit
Housing Features	
Cage Material	Nickel Silver
Centerline (Pitch)	.8 mm[.032 in]
Dimensions	
PCB Thickness (Recommended)	1.59 mm[.064 in]
Usage Conditions	
Operating Temperature Range	-40 – 85 °C[-40 – 185 °F]
Operation/Application	
Pluggable I/O Applications	Thermally Enhanced
Heat Sink Compatible	No
Circuit Application	Signal
Industry Standards	
UL Flammability Rating	UL 94V-0
Packaging Features	
Packaging Method	Box & Tray
Other	
Included Lightpipe	Yes
EMI Containment Feature Type	Internal/External EMI Springs



Product Compliance

For compliance documentation, visit the product page on TE.com>

EU RoHS Directive 2011/65/EU	Compliant
EU ELV Directive 2000/53/EC	Compliant
China RoHS 2 Directive MIIT Order No 32, 2016	No Restricted Materials Above Threshold
EU REACH Regulation (EC) No. 1907/2006	Current ECHA Candidate List: JUNE 2024 (241) Candidate List Declared Against: JUNE 2024 (241) Does not contain REACH SVHC
Halogen Content	Not Low Halogen - contains Br or Cl > 900 ppm.
Solder Process Capability	Not applicable for solder process capability

Product Compliance Disclaimer

This information is provided based on reasonable inquiry of our suppliers and represents our current actual knowledge based on the information they provided. This information is subject to change. The part numbers that TE has identified as EU RoHS compliant have a maximum concentration of 0.1% by weight in homogenous materials for lead, hexavalent chromium, mercury, PBB, PBDE, DBP, BBP, DEHP, DIBP, and 0.01% for cadmium, or qualify for an exemption to these limits as defined in the Annexes of Directive 2011/65/EU (RoHS2). Finished electrical and electronic equipment products will be CE marked as required by Directive 2011/65/EU. Components may not be CE marked. Additionally, the part numbers that TE has identified as EU ELV compliant have a maximum concentration of 0.1% by weight in homogenous materials for lead, hexavalent chromium, and mercury, and 0.01% for cadmium, or qualify for an exemption to these limits as defined in the Annexes of Directive 2000/53/EC (ELV). Regarding the REACH Regulation, the information TE provides on SVHC in articles for this part number is based on the latest European Chemicals Agency (ECHA) 'Guidance on requirements for substances in articles' posted at this URL: <https://echa.europa.eu/guidance-documents/guidance-on-reach>

Compatible Parts



TE Part # 2829040-2
QSFP IB EDR, 33AWG, 1.0M



TE Part # 2829040-4
QSFP IB EDR, 30AWG, 1.0M



TE Part # 2829040-6
QSFP IB EDR, 30AWG, 2.0M



TE Part # 2829040-7
QSFP IB EDR, 26AWG, 2.0M

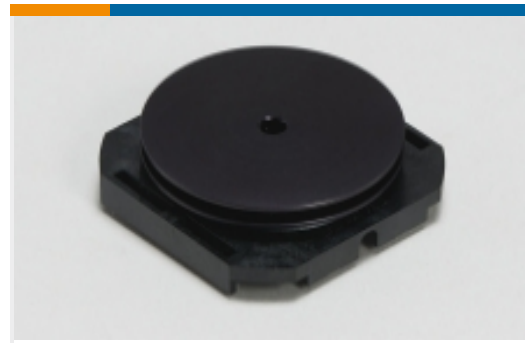


TE Part # 2829040-8
QSFP IB EDR, 26AWG, 3.0M



TE Part # 2821033-8
QSFP TO [4]SFP+, 28G, 1M, 33AWG

Also in the Series | zQSFP+/QSFP28



Heat Sinks(7)



Pluggable I/O Cable Assemblies(78)



Pluggable IO Connectors & Cages(424)

Customers Also Bought



TE Part #3-1827233-6
.5FHP05H,440,B,GIG,08/Sn,HT,NS



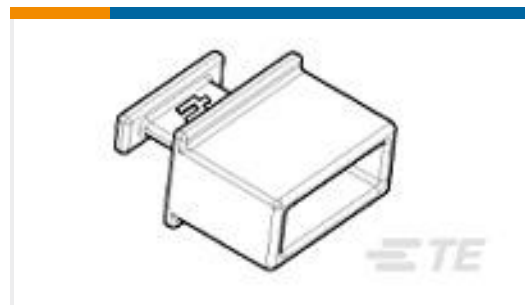
TE Part #5-103634-3
04 MTE HDR SRRA LATCH.100CL LF



TE Part #1761606-7
IDC LOW PRO HDR 20P VERT LG LAT
BLK



TE Part #6469081-1
HMZD 3PR, RECEPTACLE ASSEMBLY
BLK



TE Part #1888810-2
EMI/Dust Cover,XFP And QSFP



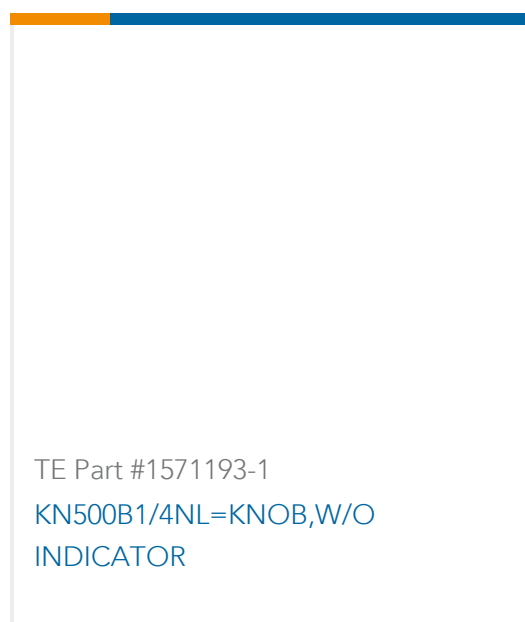
TE Part #6469025-1
HM-ZD 2PR HDR 40P 2.5MM



TE Part #2170704-4
CAGE ASSY, QSFP28 1X1, SPRING, HS



TE Part #100616-2
8/8 MOD.JACK ASSY TE SHIELDED



TE Part #1571193-1
KN500B1/4NL=KNOB,W/O
INDICATOR

Documents

Product Drawings

ZQSFP+ STACKED REC ASSEMBLY 2X1,HS

English

CAD Files

3D PDF

3D



Customer View Model

[ENG_CVM_CVM_2299940-5_A.2d_dxf.zip](#)

English

Customer View Model

[ENG_CVM_CVM_2299940-5_A.3d_igs.zip](#)

English

Customer View Model

[ENG_CVM_CVM_2299940-5_A.3d_stp.zip](#)

English

By downloading the CAD file I accept and agree to the [Terms and Conditions](#) of use.

Product Specifications

[Application Specification](#)

English