

2294417-1 ✓ ACTIVE

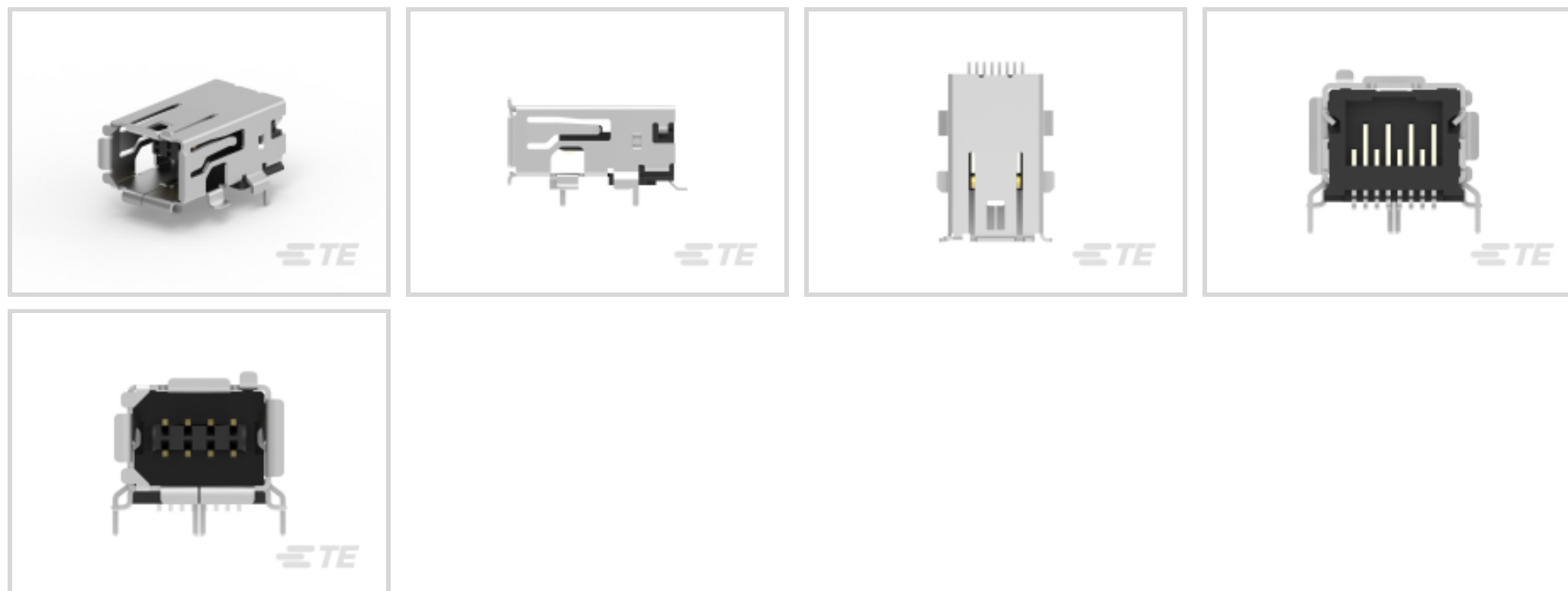
TE Internal #: 2294417-1

Industrial Mini I/O Connectors, Port Matrix Configuration 1 x 1,  
Industrial Mini I/O, High Connector Contact Density, Jack,  
Shielded, Cat 6A

[View on TE.com >](#)



Connectors > Modular Jacks & Plugs > Industrial Mini I/O Connectors > Mini I/O R/A Header Type 1



Port Matrix Configuration: **1 x 1**

Modular Jacks & Plugs Products: **Industrial Mini I/O**

Connector Contact Density: **High**

Modular Connector Style: **Jack**

Shielded: **Yes**

[All Mini I/O R/A Header Type 1 \(2\)](#)

## Features

### Product Type Features

Connectors & Connector Components Type	Connector
Panel Stops	Without
Modular Jack & Plug Interface Type	Industrial Mini I/O
Grounding Options	None
Connector Product Type	Connector Assembly
Modular Jacks & Plugs Products	Industrial Mini I/O
Modular Connector Style	Jack
Connector System	Cable-to-Board
Sealable	No
Connector & Contact Terminates To	Printed Circuit Board

### Configuration Features

Port Configuration	Single Port
Port Matrix Configuration	1 x 1



Connector Contact Density	High
Number of Positions	8
PCB Mount Orientation	Right Angle
Number of Loaded Positions	8
Status Indicator Type	None

### Signal Characteristics

Data Rate	10 Mb/s, 100 Mb/s, 1000 Mb/s, 10000 Mb/s
-----------	--

### Body Features

Shield Material	Copper Alloy
Connector Profile	Standard
Shield Plating Material	Tin over Nickel

### Contact Features

Contact Mating Area Plating Material	Gold
Contact Underplating Material	Nickel
PCB Contact Termination Area Plating Material	Tin
Contact Base Material	Copper Alloy
Contact Current Rating (Max)	.5 A

### Termination Features

Termination Method to Printed Circuit Board	Surface Mount
---	---------------

### Mechanical Attachment

Mating Alignment Type	Keyed
Mating Alignment	With
Panel Mount Feature	Without
PCB Mount Retention Type	SMT + Through Hole
Connector Mounting Type	Board Mount

### Housing Features

Housing Color	Black
Mating Entry Location	Side
Housing Material	LCP
Centerline (Pitch)	1.27 mm[.05 in]

### Usage Conditions

Operating Temperature Range	-40 – 85 °C[-40 – 185 °F][-40 – 185 °F]
-----------------------------	---



### Operation/Application

Shielded	Yes
Circuit Application	Power & Signal

### Industry Standards

UL Flammability Rating	UL 94V-0
Performance Category	Cat 6A

### Packaging Features

Packaging Method	Tape & Reel
------------------	-------------

### Other

Comment	Type 1
Field Installable	No

### Product Compliance

[For compliance documentation, visit the product page on TE.com>](#)

EU RoHS Directive 2011/65/EU	Compliant
EU ELV Directive 2000/53/EC	Compliant
China RoHS 2 Directive MIIT Order No 32, 2016	No Restricted Materials Above Threshold
EU REACH Regulation (EC) No. 1907/2006	Current ECHA Candidate List: JUN 2020 (209) Candidate List Declared Against: JAN 2020 (205) SVHC > Threshold: Not Yet Reviewed
Halogen Content	Low Halogen - Br, Cl, F, I < 900 ppm per homogenous material. Also BFR/CFR/PVC Free
Solder Process Capability	Reflow solder capable to 260°C

#### Product Compliance Disclaimer

This information is provided based on reasonable inquiry of our suppliers and represents our current actual knowledge based on the information they provided. This information is subject to change. The part numbers that TE has identified as EU RoHS compliant have a maximum concentration of 0.1% by weight in homogenous materials for lead, hexavalent chromium, mercury, PBB, PBDE, DBP, BBP, DEHP, DIBP, and 0.01% for cadmium, or qualify for an exemption to these limits as defined in the Annexes of Directive 2011/65/EU (RoHS2). Finished electrical and electronic equipment products will be CE marked as required by Directive 2011/65/EU. Components may not be CE marked. Additionally, the part numbers that TE has identified as EU ELV compliant have a maximum concentration of 0.1% by weight in homogenous materials for lead, hexavalent chromium, and mercury, and 0.01% for cadmium, or qualify for an exemption to these limits as defined in the Annexes of Directive 2000/53/EC (ELV). Regarding the REACH Regulation, the information TE provides on SVHC in articles for this part number is based on the latest European Chemicals Agency (ECHA) 'Guidance on requirements for substances in articles' posted at this URL: <https://echa.europa.eu/guidance-documents/guidance-on-reach>

## Compatible Parts



TE Part # CAT-IN291-M6641  
Mini I/O Cable Conn. Piercing D1



TE Part # CAT-IN291-M6641H  
Mini I/O Cable Plug Type 1 Solder



TE Part # CAT-IN291-M6641L  
Mini I/O Receptacle Kit Type 2 Piercing



TE Part # CAT-IN291-M6641M  
Mini I/O Field Installable Type 1



TE Part # CAT-IN291-M6641J  
Mini I/O Cable Plug Type 1 Solder Bulk



TE Part # CAT-IN291-M6641A  
Mini I/O Cable Conn. Piercing D2



TE Part # 2229737-1  
MINI I/O PIERCING TYPE HAND TOOL



TE Part # 1-2350323-1  
MINI IO CONN Cat5e FI 2x2 AWG22 T I



TE Part # 2350323-1  
MINI IO CONN Cat5e FI 2x2 AWG22 T I



TE Part # 1-2350304-1  
MINI IO CONN Cat5e FI 2x2 AWG24 /26 T I



TE Part # 2350304-1  
MINI IO CONN Cat5e FI 2x2 AWG24 /26 T I



TE Part # 1891771-2  
DIES KIT SHELL



TE Part # 1891800-2  
MINI PRESS SHELL CRIMP



TE Part # 1-2350310-1  
MINI IO CONN Cat6A FI 4x2 AWG24 /26 T I



TE Part # 2350310-1  
MINI IO CONN Cat6A FI 4x2 AWG24 /26 T I

## Customers Also Bought



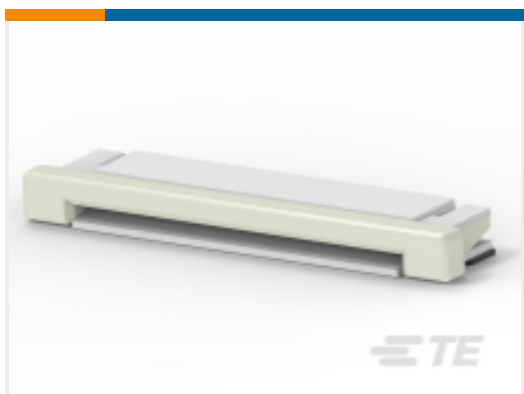
TE Part #1734595-9  
AMP HPI 1.0MM HEADERS



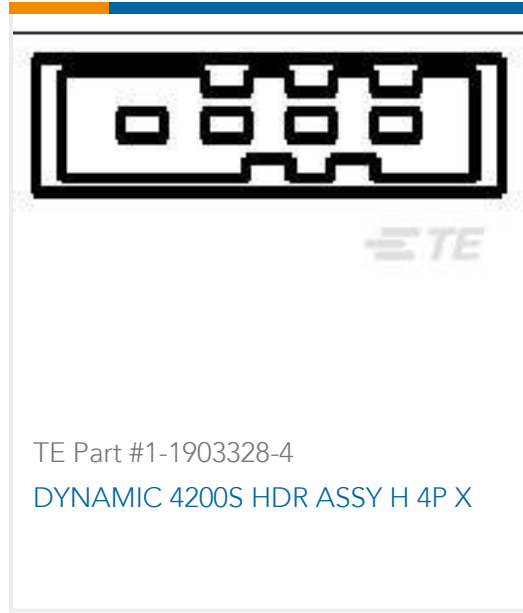
TE Part #2294417-4  
Mini I/O R/A Header Type 2



TE Part #1-1734260-5  
AMP HPI 1.25MM HEADERS



TE Part #3-1775333-2  
0.5mm FPC Connectors



## Documents

### Product Drawings

[INDUSTRIAL MINI I/O HDR TYPE I EMBOSS](#)

English

### CAD Files

[3D PDF](#)

3D

Customer View Model

[ENG\\_CVM\\_CVM\\_2294417-1\\_C.2d\\_dxf.zip](#)

English

Customer View Model

[ENG\\_CVM\\_CVM\\_2294417-1\\_C.3d\\_igs.zip](#)

English

Customer View Model

[ENG\\_CVM\\_CVM\\_2294417-1\\_C.3d\\_stp.zip](#)

English

By downloading the CAD file I accept and agree to the [Terms and Conditions](#) of use.

### Product Specifications

[Application Specification](#)

English

### Product Environmental Compliance

[Product Compliance](#)

English

[Product Compliance](#)

English

