



Part Number : [936010247](#)

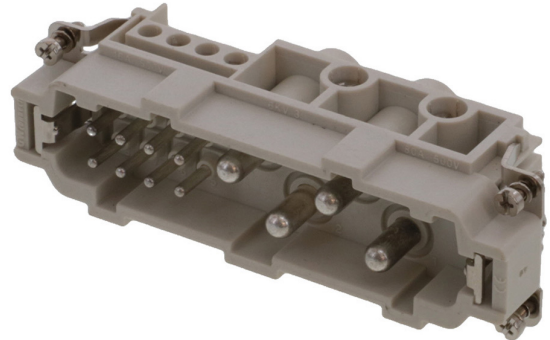
Product Description : GWconnect Screw Terminal Insert, Male, 4-Pole-80A without Wire Protection and 8-Pole-16A with Wire Protection, Silver (Ag) Plated Contacts, Size 24B «104x27»

Series Number : 93601

Status : Active


Product Category : Heavy-Duty Connectors

Engineering Number : 7312.6143.0



Product Environment Compliance

Compliance

GADSL/IMDS	Not Relevant
China RoHS	
EU ELV	Not Relevant
Low-Halogen Status	Low-Halogen per IEC 61249-2-21
REACH SVHC	Contains Lead per D(2024)6225-DC (07 Nov 2024)
EU RoHS	Compliant with Exemption 6(c) per EU 2015/863

Multiple Part Product Compliance Statements

- Eu RoHS
- REACH SVHC
- Low-Halogen

Multiple Part Industry Compliance Documents

- IPC 1752A Class C
- IPC 1752A Class D
- Molex Product Compliance Declaration
- IEC-62474
- chemSHERPA (xml)

EU RoHS Certificate of Compliance

Part Details

General

Status	Active
Category	Heavy-Duty Connectors
Series	93601
Description	GWconnect Screw Terminal Insert, Male, 4-Pole-80A without Wire Protection and 8-Pole-16A with Wire Protection, Silver (Ag) Plated Contacts, Size 24B «104x27»
Component Type	Inserts - Screw Terminal
Insert Series	S-K4/8
Product Name	GWconnect
Standard	CSA C22.2 NO. 182.3, EN 60664-1, EN 61984, UL 1977
UPC	887191879055

Agency

CSA	256883
UL	E249674

Electrical

Voltage	EN 61984: 500V 6kV 3, UL/CSA: 600V
Working Current	80A/16A

Physical

Component Size	24B «104X27»
Durability (mating cycles max)	500
Gender	Male
Insert Color	Grey
Material - Contact	Copper Alloy
Material - Insert	Polycarbonate
Material - Plating	Silver
Net Weight	145.000/g
Number of Rows	2
Packaging Type	Bag
Polarized to Mating Part	Yes

Poles	12
Stripping Length	14.00mm, 7.00mm
Temperature Range - Operating	-40° to +125°C
Tightening Test Torque	0.50 Nm, 2.50 Nm
Wire Size (AWG)	14-20, 5-16

Mates With / Use With

Mates with Part(s)

Description	Part Number
GWconnect Screw Terminal Insert, Female, 4-Pole-80A without Wire Protection and 8-Pole-16A with Wire Protection, Silver (Ag) Plated Contacts, Size 24B «104x27»	<u>936010245</u>

Use with Part(s)

Description	Part Number
Use With	Size 24B «104x27» Hoods and Housings