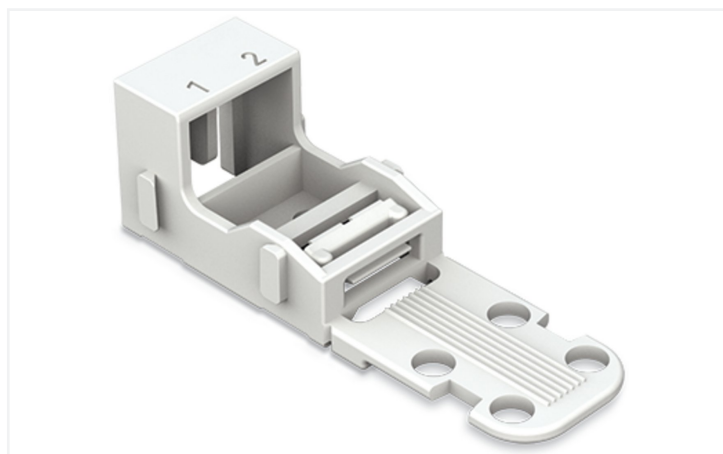


## Data Sheet | Item Number: 221-512

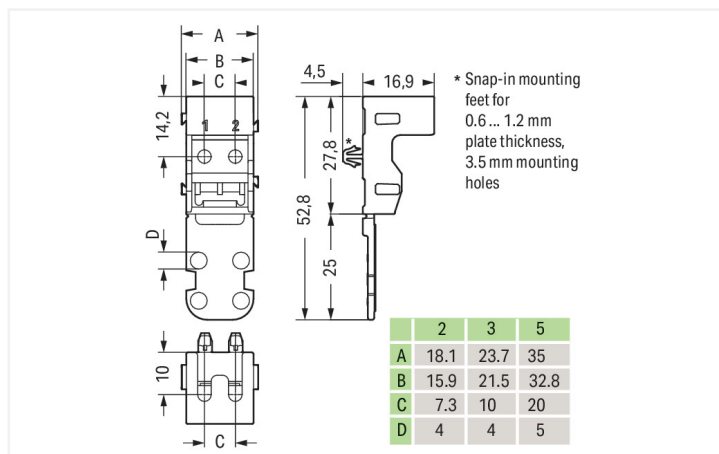
Mounting carrier; for 2-conductor terminal blocks; 221 Series - 4 mm<sup>2</sup>; with snap-in mounting foot for horizontal mounting; white

<https://www.wago.com/221-512>



Color: ■ white

Similar to illustration



Dimensions in mm

### Physical data

Width	18.1 mm / 0.713 inches
Height	21.4 mm / 0.843 inches
Height from the surface	16.9 mm / 0.665 inches
Depth	52.8 mm / 2.079 inches

### Mechanical data

Mounting type	with snap-in mounting foot for horizontal mounting
Suitable	for 2-wire connectors (4 mm <sup>2</sup> )

### Material data

Note (material data)	<a href="#">Information on material specifications can be found here</a>
Color	white
Material group	I
Insulation material (main housing)	Polyamide (PA66)
Flammability class per UL94	V0
Fire load	0.083 MJ
Weight	2.8 g

### Commercial data

eCl@ss 10.0	27-14-11-92
eCl@ss 9.0	27-14-11-92
ETIM 9.0	EC002848
ETIM 8.0	EC002848
PU (SPU)	50 (10) pcs
Packaging type	Box
Country of origin	CN
GTIN	4055143595834
Customs tariff number	39269097900

## Environmental Product Compliance

RoHS Compliance Status	Compliant, No Exemption
------------------------	-------------------------

## Downloads

### Environmental Product Compliance

Compliance Search			
Environmental Product Compliance 221-512			<a href="#">↓</a>

## Documentation

Bid Text			
221-512	19.02.2019	xml 2.73 KB	<a href="#">↓</a>
221-512	04.01.2018	doc 24.00 KB	<a href="#">↓</a>

## CAD/CAE-Data

CAD data			
2D/3D Models 221-512			<a href="#">↓</a>

CAE data			
EPLAN Data Portal 221-512			<a href="#">↓</a>
ZUKEN Portal 221-512			<a href="#">↓</a>

## 1 Compatible Products

### 1.1 Optional Accessories

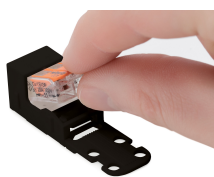
#### 1.1.1 Marking

##### 1.1.1.1 Marking strip

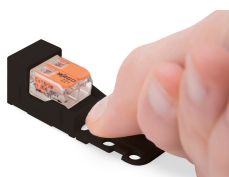


**Item No.: 210-833**  
 Marking strips; 25 m on roll; 6 mm wide; plain; Self-adhesive; white

## Installation Notes



Inserting a connector into the mounting carrier.



Removing a connector from the mounting carrier.

### Conductor termination



Inserting a conductor.



Horizontal screw mounting



Vertical screw mounting



Horizontal mounting via snap-in foot



Vertical mounting via snap-in foot

### Strain relief

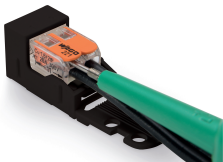


Use a cable tie to secure the conductors to the strain relief plate.



The strain relief plate can be removed.

### Testing



Testing a connector mounted on the carrier via test slot.

### Application



Connecting a light to the mains.

Marking



Labeling the mounting carrier.