

Electronic housing - ME MAX 90 U-U1 KMGY



2200546

<https://www.phoenixcontact.com/pc/products/2200546>

Please be informed that the data shown in this PDF document is generated from our Online Catalog. Please find the complete data in the user documentation. Our General Terms of Use for Downloads are valid.



DIN rail housing, Complete housing with metal foot catch, tall design, with vents, width: 90.4 mm, height: 99 mm, depth: 113.65 mm, color: light grey (7035), cross connection: DIN rail connector (optional), number of positions cross connector: 5

Your advantages

- Easy installation
- Available in overall widths from 6.2 mm ... 90 mm, modular extension possible
- Variety of connection technology
- Can be mounted on the DIN rail
- With DIN-rail-mountable bus connector and power connector system as an option
- Transparent front cover can be swiveled

Commercial Data

Item number	2200546
Packing unit	10 pc
Minimum order quantity	10 pc
Note	Made to Order (non-returnable)
Product Key	ACHABA
Catalog Page	Page 690 (C-1-2013)
GTIN	4046356608114
Weight per Piece (including packing)	151.08 g
Weight per Piece (excluding packing)	134.48 g
Customs tariff number	85389099
Country of origin	DE

Electronic housing - ME MAX 90 U-U1 KMGY



2200546

<https://www.phoenixcontact.com/pc/products/2200546>

Technical Data

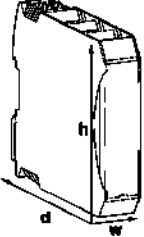
Notes

Assembly instruction:	Refer to the data sheet for the range in the download area.
Recommendation	Material of contact pads for bus connector, galvanic gold (hard gold)

Product properties

Product type	Complete housing
Max. number of positions	20 (pitch: 3.5 mm)
	16 (pitch: 5 mm)
	12 (pitch: 7.25 mm/7.5 mm)
Number of rows	1
Type	Complete housing with metal foot catch, tall design
Housing type	DIN rail housing
Ventilation openings present	yes
Housing series	ME-MAX
	0 (Top) / 1 (Bottom)

Dimensions

Dimensional drawing	
Width	90.4 mm
Height	99 mm
Depth	113.65 mm
Depth from top edge of DIN rail	107 mm

PCB design

PCB thickness	1.4 mm ... 1.8 mm
---------------	-------------------

Material specifications

Color	light grey (7035)
Flammability rating according to UL 94	V0
CTI according to IEC 60112	600
Surface characteristics	untreated
Housing material	Polyamide

Environmental and real-life conditions

Electronic housing - ME MAX 90 U-U1 KMGY



2200546

<https://www.phoenixcontact.com/pc/products/2200546>

Power dissipation single housing for 20 °C

Ambient temperature	20 °C
Reduction factor	1
Mounting position	vertical
Power dissipation	10.4 W

Power dissipation single housing for 30 °C

Ambient temperature	30 °C
Reduction factor	0.91
Mounting position	vertical
Power dissipation	9.45 W

Power dissipation single housing for 40 °C

Ambient temperature	40 °C
Reduction factor	0.81
Mounting position	vertical
Power dissipation	8.4 W

Power dissipation single housing for 50 °C

Ambient temperature	50 °C
Reduction factor	0.7
Mounting position	vertical
Power dissipation	7.3 W

Power dissipation single housing for 60 °C

Ambient temperature	60 °C
Reduction factor	0.57
Mounting position	vertical
Power dissipation	5.9 W

Power dissipation single housing for 70 °C

Ambient temperature	70 °C
Reduction factor	0.49
Mounting position	vertical
Power dissipation	5.1 W

Vibration test

Specification	IEC 60068-2-6:2007-12
Frequency	10 - 150 - 10 Hz
Sweep speed	1 octave/min
Amplitude	0.15 mm (10 Hz ... 58.1 Hz)
Acceleration	2g (58.1 Hz ... 150 Hz)
Test duration per axis	2.5 h
Test directions	X-, Y- and Z-axis

Mechanical strength / tumbling barrel

Specification	IEC 60998-1:2002-12
---------------	---------------------

Electronic housing - ME MAX 90 U-U1 KMGY



2200546

<https://www.phoenixcontact.com/pc/products/2200546>

Height of fall	50 cm
Frequency	10

Shocks

Specification	IEC 60068-2-27:2008-02
Pulse shape	Half-sine
Acceleration	15g
Shock duration	11 ms
Number of shocks per direction	3
Test directions	X-, Y- and Z-axis (pos. and neg.)

Degree of protection (IP code)

Specification	IEC 60529:1989-11 + AMD 1:1999-11 + AMD 2:2013-08
---------------	---

Ambient conditions

Max. IP code to attain	IP20
Ambient temperature (operation)	-40 °C ... 105 °C (depending on power dissipation)
Ambient temperature (storage/transport)	-40 °C ... 55 °C
Ambient temperature (assembly)	-5 °C ... 100 °C
Relative humidity (storage/transport)	80 %

PCB data

Number of PCB holders	4
Type of PCB mount	Latching
Thickness of the PCB	1.4 mm ... 1.8 mm

Mounting

Mounting type	DIN rail mounting
Mounting position	Vertical (horizontal DIN rail)

Packaging specifications

Type of packaging	packed in cardboard
Outer packaging type	Carton

Electronic housing - ME MAX 90 U-U1 KMGY

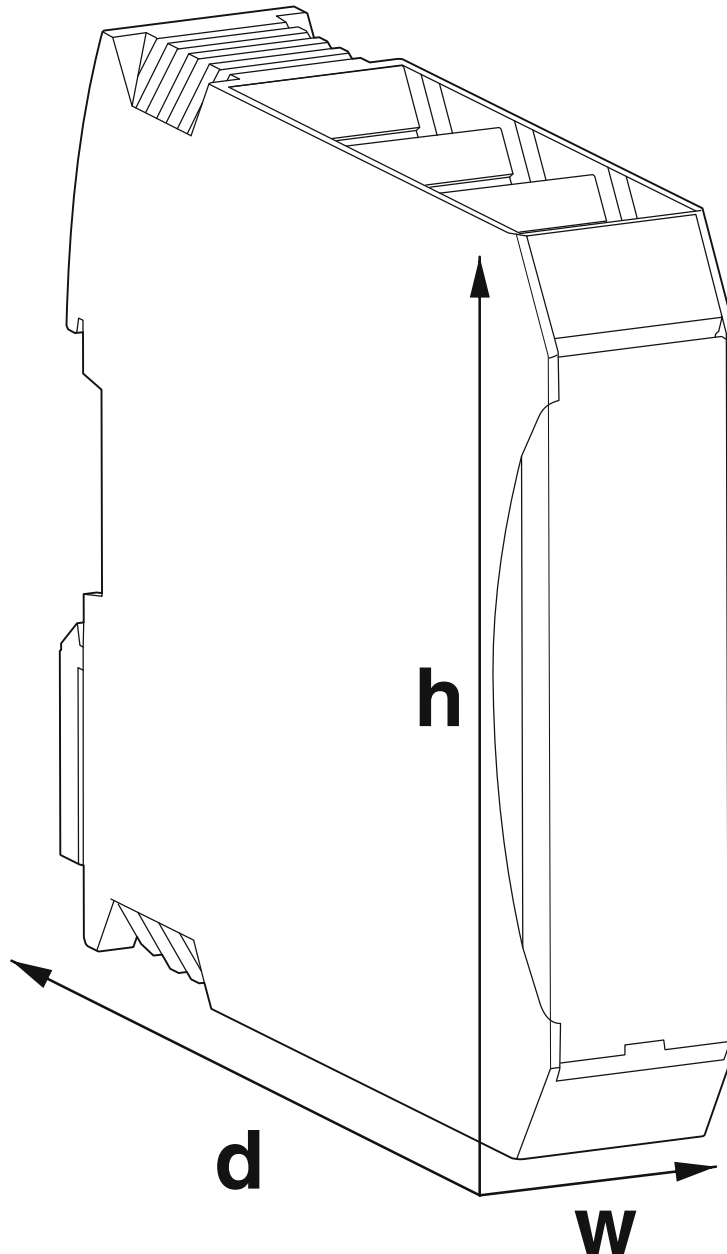
2200546

<https://www.phoenixcontact.com/pc/products/2200546>



Drawings

Dimensional drawing



Schematic figure for illustrating the item dimensions. The figure is not of the desired product. For further details, refer to the product drawings in the "Downloads" tab.

Electronic housing - ME MAX 90 U-U1 KMGY



2200546

<https://www.phoenixcontact.com/pc/products/2200546>

Approvals



UL Recognized

Approval ID: FILE E 240868

Electronic housing - ME MAX 90 U-U1 KMGY



2200546

<https://www.phoenixcontact.com/pc/products/2200546>

Classifications

ECLASS

ECLASS-9.0	27182702
ECLASS-10.0.1	27182702
ECLASS-11.0	27182702

ETIM

ETIM 8.0	EC001031
----------	----------

UNSPSC

UNSPSC 21.0	31261500
-------------	----------

Electronic housing - ME MAX 90 U-U1 KMGY



2200546

<https://www.phoenixcontact.com/pc/products/2200546>

Environmental Product Compliance

China RoHS	Environmentally friendly use period: unlimited = EFUP-e
	No hazardous substances above threshold values

2200546

<https://www.phoenixcontact.com/pc/products/2200546>

Mandatory Accessories

PCB header

PCB header - MCO 1,5/ 5-G1L-3,5 KMGY - 2278380

<https://www.phoenixcontact.com/pc/products/2278380>



PCB headers, nominal cross section: 1.5 mm², color: light grey, nominal current: 8 A, rated voltage (III/2): 160 V, contact surface: Tin, type of contact: Male connector, number of potentials: 5, number of rows: 1, number of positions: 5, number of connections: 5, product range: MCO 1,5/..-G1L, pitch: 3.5 mm, mounting: Wave soldering, pin layout: Linear pinning, solder pin [P]: 2 mm, locking: without, type of packaging: packed in cardboard, Product with pin output on left side

PCB header

PCB header - MCO 1,5/ 5-G1R-3,5 KMGY - 2278351

<https://www.phoenixcontact.com/pc/products/2278351>



PCB headers, nominal cross section: 1.5 mm², color: light grey, nominal current: 8 A, rated voltage (III/2): 160 V, contact surface: Tin, type of contact: Male connector, number of potentials: 5, number of rows: 1, number of positions: 5, number of connections: 5, product range: MCO 1,5/..-G1R, pitch: 3.5 mm, mounting: Wave soldering, pin layout: Linear pinning, solder pin [P]: 2 mm, locking: without, type of packaging: packed in cardboard, Product with pin output on right side

2200546

<https://www.phoenixcontact.com/pc/products/2200546>

PCB header

PCB header - MSTBO 2,5/ 4-G1PL GY7035 - 2200325

<https://www.phoenixcontact.com/pc/products/2200325>



PCB headers, nominal cross section: 2.5 mm², color: light grey, nominal current: 16 A, rated voltage (III/2): 320 V, contact surface: Tin, type of contact: Male connector, number of rows: 1, number of positions: 4, product range: MSTBO 2,5/...-G1PL, pitch: 5 mm, mounting: Wave soldering, pin layout: Linear pinning, solder pin [P]: 3.5 mm, number of solder pins per potential: 1, locking: without, type of packaging: packed in cardboard, Product with pin output on left side

PCB header

PCB header - MSTBO 2,5/ 4-G1PR GY7035 - 2200326

<https://www.phoenixcontact.com/pc/products/2200326>



PCB headers, nominal cross section: 2.5 mm², color: light grey, nominal current: 16 A, rated voltage (III/2): 320 V, contact surface: Tin, type of contact: Male connector, number of rows: 1, number of positions: 4, product range: MSTBO 2,5/...-G1PR, pitch: 5 mm, mounting: Wave soldering, pin layout: Linear pinning, solder pin [P]: 3.5 mm, number of solder pins per potential: 1, locking: without, type of packaging: packed in cardboard, Product with pin output on right side

2200546

<https://www.phoenixcontact.com/pc/products/2200546>

PCB header

PCB header - GMSTBO 2,5 HV/ 3-GL-7,25 THR - 2199663

<https://www.phoenixcontact.com/pc/products/2199663>



PCB headers, nominal cross section: 2.5 mm², color: black, nominal current: 16 A, rated voltage (III/2): 630 V, type of contact: Male connector, number of potentials: 3, number of rows: 1, number of positions: 3, number of connections: 3, product range: GMSTBO 2,5 HV, pitch: 7.25 mm, mounting: THR soldering, pin layout: Linear pinning, solder pin [P]: 2.1 mm, number of solder pins per potential: 1, plug-in system: COMBICON MSTB 2,5, Pin connector pattern alignment: Standard, type of packaging: packed in cardboard, Product with pin output on left side

PCB header

PCB header - GMSTBO 2,5 HV/ 3-GR-7,25 THR - 2199566

<https://www.phoenixcontact.com/pc/products/2199566>



PCB headers, nominal cross section: 2.5 mm², color: black, nominal current: 16 A, rated voltage (III/2): 630 V, type of contact: Male connector, number of potentials: 3, number of rows: 1, number of positions: 3, number of connections: 3, product range: GMSTBO 2,5 HV, pitch: 7.25 mm, mounting: THR soldering, pin layout: Linear pinning, solder pin [P]: 2.1 mm, number of solder pins per potential: 1, plug-in system: COMBICON MSTB 2,5, Pin connector pattern alignment: Standard, type of packaging: packed in cardboard, Product with pin output on right side

2200546

<https://www.phoenixcontact.com/pc/products/2200546>

PCB header

PCB header - MSTBO 2,5/ 4-G1L THRR44 BK - 2697194

<https://www.phoenixcontact.com/pc/products/2697194>



PCB headers, nominal cross section: 2.5 mm², color: black, nominal current: 16 A, rated voltage (III/2): 320 V, contact surface: Tin, type of contact: Male connector, number of rows: 1, number of positions: 4, product range: MSTBO 2,5/..-G1L-THR, pitch: 5 mm, mounting: THR soldering, pin layout: Linear pinning, solder pin [P]: 2.5 mm, number of solder pins per potential: 1, plug-in system: COMBICON MSTB 2,5, locking: without, type of packaging: 44 mm wide tape, Product with pin output on left side

PCB header

PCB header - MSTBO 2,5/ 4-G1R THRR44 BK - 2697204

<https://www.phoenixcontact.com/pc/products/2697204>



PCB headers, nominal cross section: 2.5 mm², color: black, nominal current: 16 A, rated voltage (III/2): 320 V, contact surface: Tin, type of contact: Male connector, number of rows: 1, number of positions: 4, product range: MSTBO 2,5/..-G1R-THR, pitch: 5 mm, mounting: THR soldering, pin layout: Linear pinning, solder pin [P]: 2.5 mm, number of solder pins per potential: 1, plug-in system: COMBICON MSTB 2,5, locking: without, type of packaging: 44 mm wide tape, Product with pin output on right side

2200546

<https://www.phoenixcontact.com/pc/products/2200546>

PCB header

PCB header - MSTBO 2,5/ 4-G1L KMGY - 2907774

<https://www.phoenixcontact.com/pc/products/2907774>



PCB headers, nominal cross section: 2.5 mm², color: light grey, nominal current: 12 A, rated voltage (III/2): 320 V, contact surface: Tin, type of contact: Male connector, number of potentials: 4, number of rows: 1, number of positions: 4, number of connections: 4, product range: MSTBO 2,5/..-G1L, pitch: 5 mm, mounting: Wave soldering, pin layout: Linear pinning, solder pin [P]: 3.5 mm, number of solder pins per potential: 1, locking: without, type of packaging: packed in cardboard, Product with pin output on left side

PCB header

PCB header - MSTBO 2,5/ 4-G1R KMGY - 2907787

<https://www.phoenixcontact.com/pc/products/2907787>



PCB headers, nominal cross section: 2.5 mm², color: light grey, nominal current: 12 A, rated voltage (III/2): 320 V, contact surface: Tin, type of contact: Male connector, number of potentials: 4, number of rows: 1, number of positions: 4, number of connections: 4, product range: MSTBO 2,5/..-G1R, pitch: 5 mm, mounting: Wave soldering, pin layout: Linear pinning, solder pin [P]: 3.5 mm, number of solder pins per potential: 1, locking: without, type of packaging: packed in cardboard, Product with pin output on right side

2200546

<https://www.phoenixcontact.com/pc/products/2200546>

PCB terminal block

PCB terminal block - MKDSO 1,5/ 5-L-3,5 KMGY - 2278393

<https://www.phoenixcontact.com/pc/products/2278393>



PCB terminal block, nominal current: 8 A, rated voltage (III/2): 160 V, nominal cross section: 1.5 mm², number of potentials: 5, number of rows: 1, number of positions per row: 5, product range: MKDSO 1,5/..-L, pitch: 3.5 mm, connection method: Screw connection with tension sleeve, mounting: Wave soldering, conductor/PCB connection direction: 0 °, color: light grey, Pin layout: Linear pinning, Solder pin [P]: 2.3 mm, number of solder pins per potential: 1, type of packaging: packed in cardboard. Product with pin output on left side

PCB terminal block

PCB terminal block - MKDSO 1,5/ 5-R-3,5 KMGY - 2278416

<https://www.phoenixcontact.com/pc/products/2278416>



PCB terminal block, nominal current: 8 A, rated voltage (III/2): 160 V, nominal cross section: 1.5 mm², number of potentials: 5, number of rows: 1, number of positions per row: 5, product range: MKDSO 1,5/..-R, pitch: 3.5 mm, connection method: Screw connection with tension sleeve, mounting: Wave soldering, conductor/PCB connection direction: 0 °, color: light grey, Pin layout: Linear pinning, Solder pin [P]: 2.3 mm, number of solder pins per potential: 1, type of packaging: packed in cardboard. Product with pin output on right side

2200546

<https://www.phoenixcontact.com/pc/products/2200546>

PCB terminal block

PCB terminal block - MKDSO 2,5/ 4-L KMGY - 2908485

<https://www.phoenixcontact.com/pc/products/2908485>



PCB terminal block, nominal current: 24 A, rated voltage (III/2): 400 V, nominal cross section: 2.5 mm², number of potentials: 4, number of rows: 1, number of positions per row: 4, product range: MKDSO 2,5/..-L, pitch: 5 mm, connection method: Screw connection with tension sleeve, mounting: Wave soldering, conductor/PCB connection direction: 0 °, color: light grey, Pin layout: Linear pinning, Solder pin [P]: 3.5 mm, number of solder pins per potential: 1, type of packaging: packed in cardboard. Product with pin output on left side

PCB terminal block

PCB terminal block - MKDSO 2,5/ 4-R KMGY - 2908472

<https://www.phoenixcontact.com/pc/products/2908472>



PCB terminal block, nominal current: 24 A, rated voltage (III/2): 400 V, nominal cross section: 2.5 mm², number of potentials: 4, number of rows: 1, number of positions per row: 4, product range: MKDSO 2,5/..-R, pitch: 5 mm, connection method: Screw connection with tension sleeve, mounting: Wave soldering, conductor/PCB connection direction: 0 °, color: light grey, Pin layout: Linear pinning, Solder pin [P]: 3.5 mm, number of solder pins per potential: 1, type of packaging: packed in cardboard. Product with pin output on right side

2200546

<https://www.phoenixcontact.com/pc/products/2200546>

PCB terminal block

PCB terminal block - MKDSO 2,5 HV/ 3L-7,5 KMGY - 2890946

<https://www.phoenixcontact.com/pc/products/2890946>



PCB terminal block, nominal current: 24 A, rated voltage (III/2): 630 V, nominal cross section: 2.5 mm², number of rows: 1, number of positions per row: 3, product range: MKDSO 2,5 HV/...-L, pitch: 7.5 mm, connection method: Screw connection with tension sleeve, mounting: Wave soldering, conductor/PCB connection direction: 0 °, color: light grey, Pin layout: Linear pinning, Solder pin [P]: 3.5 mm, number of solder pins per potential: 1. Product with pin output on left side

PCB terminal block

PCB terminal block - MKDSO 2,5 HV/ 3R-7,5 KMGY - 2890959

<https://www.phoenixcontact.com/pc/products/2890959>



PCB terminal block, nominal current: 24 A, rated voltage (III/2): 630 V, nominal cross section: 2.5 mm², number of rows: 1, number of positions per row: 3, product range: MKDSO 2,5 HV/...-R, pitch: 7.5 mm, connection method: Screw connection with tension sleeve, mounting: Wave soldering, conductor/PCB connection direction: 0 °, color: light grey, Pin layout: Linear pinning, Solder pin [P]: 3.5 mm, number of solder pins per potential: 1. Product with pin output on right side

2200546

<https://www.phoenixcontact.com/pc/products/2200546>

PCB terminal block

PCB terminal block - FKDSO 2,5/ 4-L KMGY - 2200319

<https://www.phoenixcontact.com/pc/products/2200319>



PCB terminal block, nominal current: 22 A, rated voltage (III/2): 250 V, nominal cross section: 2.5 mm², number of potentials: 4, number of rows: 1, number of positions per row: 4, product range: FKDSO 2,5/..-L, pitch: 5 mm, connection method: Push-in spring connection, mounting: Wave soldering, conductor/PCB connection direction: 0 °, color: light grey, Pin layout: Linear pinning, Solder pin [P]: 3.5 mm, number of solder pins per potential: 1, type of packaging: packed in cardboard. Product with pin output on left side

PCB terminal block

PCB terminal block - FKDSO 2,5/ 4-R KMGY - 2200320

<https://www.phoenixcontact.com/pc/products/2200320>



PCB terminal block, nominal current: 22 A, rated voltage (III/2): 250 V, nominal cross section: 2.5 mm², number of potentials: 4, number of rows: 1, number of positions per row: 4, product range: FKDSO 2,5/..-R, pitch: 5 mm, connection method: Push-in spring connection, mounting: Wave soldering, conductor/PCB connection direction: 0 °, color: light grey, Pin layout: Linear pinning, Solder pin [P]: 3.5 mm, number of solder pins per potential: 1, type of packaging: packed in cardboard. Product with pin output on right side

2200546

<https://www.phoenixcontact.com/pc/products/2200546>

PCB terminal block

PCB terminal block - FKDSO 2,5 HV/3-L 7,5 GY7035 - 2201128

<https://www.phoenixcontact.com/pc/products/2201128>



PCB terminal block, nominal current: 24 A, rated voltage (III/2): 630 V, nominal cross section: 2.5 mm², number of potentials: 3, number of rows: 1, number of positions per row: 3, product range: FKDSO 2,5 HV/..-L, pitch: 7.5 mm, connection method: Push-in spring connection, mounting: Wave soldering, conductor/PCB connection direction: 0 °, color: light grey, Pin layout: Linear pinning, Solder pin [P]: 3.53 mm, number of solder pins per potential: 1, type of packaging: packed in cardboard. Product with pin output on left side

PCB terminal block

PCB terminal block - FKDSO 2,5 HV/3-R 7,5 GY7035 - 2201129

<https://www.phoenixcontact.com/pc/products/2201129>



PCB terminal block, nominal current: 24 A, rated voltage (III/2): 630 V, nominal cross section: 2.5 mm², number of potentials: 3, number of rows: 1, number of positions per row: 3, product range: FKDSO 2,5 HV/..-R, pitch: 7.5 mm, connection method: Push-in spring connection, mounting: Wave soldering, conductor/PCB connection direction: 0 °, color: light grey, Pin layout: Linear pinning, Solder pin [P]: 3.53 mm, number of solder pins per potential: 1, type of packaging: packed in cardboard. Product with pin output on right side

2200546

<https://www.phoenixcontact.com/pc/products/2200546>

PCB connector

PCB connector - MC 1,5/ 5-ST-3,5 GY7035 - 1769087

<https://www.phoenixcontact.com/pc/products/1769087>



PCB connector, nominal cross section: 1.5 mm², color: light grey, nominal current: 8 A, rated voltage (III/2): 160 V, contact surface: Tin, type of contact: Female connector, number of potentials: 5, number of rows: 1, number of positions: 5, number of connections: 5, product range: MC 1,5/..-ST, pitch: 3.5 mm, connection method: Screw connection with tension sleeve, screw head form: L Slotted, conductor/PCB connection direction: 0 °, number of solder pins per potential: 1, plug-in system: COMBICON MC 1,5, locking: without, mounting: without, type of packaging: packed in cardboard

Printed-circuit board connector

Printed-circuit board connector - FMC 1,5/ 5-ST-3,5 GY7035 - 1773581

<https://www.phoenixcontact.com/pc/products/1773581>



PCB connector, nominal cross section: 1.5 mm², color: light grey, nominal current: 8 A, rated voltage (III/2): 160 V, contact surface: Tin, type of contact: Female connector, number of potentials: 5, number of rows: 1, number of positions: 5, number of connections: 5, product range: FMC 1,5/..-ST, pitch: 3.5 mm, connection method: Push-in spring connection, conductor/PCB connection direction: 0 °, plug-in system: COMBICON MC 1,5, locking: without, mounting: without, type of packaging: packed in cardboard

2200546

<https://www.phoenixcontact.com/pc/products/2200546>

PCB connector

PCB connector - FK-MCP 1,5/ 5-ST-3,5 GY7035 - 1773604

<https://www.phoenixcontact.com/pc/products/1773604>



PCB connector, nominal cross section: 1.5 mm², color: light grey, nominal current: 8 A, rated voltage (III/2): 160 V, contact surface: Tin, type of contact: Female connector, number of potentials: 5, number of rows: 1, number of positions: 5, number of connections: 5, product range: FK-MCP 1,5/..-ST, pitch: 3.5 mm, connection method: Push-in spring connection, conductor/PCB connection direction: 0 °, number of solder pins per potential: 1, plug-in system: COMBICON MC 1,5, locking: without, mounting: without, type of packaging: packed in cardboard

Printed-circuit board connector

Printed-circuit board connector - PSPT 2,5/ 4-ST KMGY - 2202344

<https://www.phoenixcontact.com/pc/products/2202344>



PCB connector, nominal cross section: 2.5 mm², color: light grey, nominal current: 16 A, rated voltage (III/2): 300 V, contact surface: Tin, type of contact: Female connector, number of potentials: 4, number of rows: 1, number of positions: 4, number of connections: 4, product range: PSPT 2,5/..-ST, pitch: 5 mm, connection method: Push-in spring connection, conductor/PCB connection direction: 0 °, locking clip: - Locking clip, locking: without, mounting: without, type of packaging: packed in cardboard, Color of the spring lever: orange

2200546

<https://www.phoenixcontact.com/pc/products/2200546>

Printed-circuit board connector

Printed-circuit board connector - MSTBT 2,5 HC/ 4-STP GY7035 - 2200332

<https://www.phoenixcontact.com/pc/products/2200332>



PCB connector, nominal cross section: 2.5 mm², color: light grey, nominal current: 16 A, rated voltage (III/2): 320 V, contact surface: Tin, type of contact: Female connector, number of rows: 1, number of positions: 4, product range: MSTBT 2,5 HC/...-STP, pitch: 5 mm, connection method: Screw connection with tension sleeve, conductor/PCB connection direction: 0 °, locking clip: - Locking clip, plug-in system: COMBICON MSTB 2,5 HC, locking: without, mounting: without

Printed-circuit board connector

Printed-circuit board connector - GMSTBT 2,5 HV/3-ST-7,25 GY7035 - 2199553

<https://www.phoenixcontact.com/pc/products/2199553>



PCB connector, nominal cross section: 2.5 mm², color: light grey, nominal current: 16 A, rated voltage (III/2): 1000 V, contact surface: Tin, type of contact: Female connector, number of rows: 1, number of positions: 3, product range: GMSTBT 2,5 HV/...-ST, pitch: 7.25 mm, connection method: Screw connection with tension sleeve, conductor/PCB connection direction: 0 °, locking clip: - Locking clip, locking: without, mounting: without, type of packaging: packed in cardboard

Electronic housing - ME MAX 90 U-U1 KMGY

2200546

<https://www.phoenixcontact.com/pc/products/2200546>

PCB header

PCB header - MSTBO 2,5/ 4-G1L KMGY AU - 1077607

<https://www.phoenixcontact.com/pc/products/1077607>



PCB headers, color: light grey, contact surface: Gold, number of rows: 1, number of positions: 4, product range: MSTBO 2,5/..-G1L Au, pitch: 5 mm, mounting: Wave soldering, pin layout: Linear pinning, solder pin [P]: 3.5 mm, number of solder pins per potential: 1, locking: without, type of packaging: packed in cardboard, Product with pin output on left side

PCB header

PCB header - MSTBO 2,5/ 4-G1R KMGY AU - 1077608

<https://www.phoenixcontact.com/pc/products/1077608>



PCB headers, color: light grey, contact surface: Gold, number of rows: 1, number of positions: 4, product range: MSTBO 2,5/..-G1R Au, pitch: 5 mm, mounting: Wave soldering, pin layout: Linear pinning, solder pin [P]: 3.5 mm, number of solder pins per potential: 1, locking: without, type of packaging: packed in cardboard, Product with pin output on right side

Electronic housing - ME MAX 90 U-U1 KMGY

2200546

<https://www.phoenixcontact.com/pc/products/2200546>

PCB header

PCB header - MSTBO 2,5/ 4-G1L THRR44 BK AU - 1077613

<https://www.phoenixcontact.com/pc/products/1077613>



PCB headers, color: black, contact surface: Gold, type of contact: Male connector, number of positions: 4, product range: MSTBO 2,5/..-G1L THR Au, pitch: 5 mm, mounting: THR soldering, pin layout: Linear pinning, solder pin [P]: 2.5 mm, number of solder pins per potential: 1, type of packaging: 44 mm wide tape, Article with lateral pin exit

PCB header

PCB header - MSTBO 2,5/ 4-G1R THRR44 BK AU - 1077614

<https://www.phoenixcontact.com/pc/products/1077614>



PCB headers, color: black, contact surface: Gold, type of contact: Male connector, number of positions: 4, product range: MSTBO 2,5/..-G1R THR Au, pitch: 5 mm, mounting: THR soldering, pin layout: Linear pinning, solder pin [P]: 2.5 mm, number of solder pins per potential: 1, type of packaging: 44 mm wide tape, Product with pin output on right side

Accessories

Electronic housing - ME MAX 90 U-U1 KMGY

2200546

<https://www.phoenixcontact.com/pc/products/2200546>

Functional ground contact

Functional ground contact - ME FE-CONTACT - 2908294

<https://www.phoenixcontact.com/pc/products/2908294>



DIN rail housing, FE contact with soldering lug, width: 5 mm, height: 15.25 mm, depth: 9.5 mm, color: silver

Filler plugs

Filler plugs - ME MAX B-22,5 KMGY - 2707929

<https://www.phoenixcontact.com/pc/products/2707929>



DIN rail housing, Filler plug for unoccupied terminal points, width: 20 mm, height: 21.6 mm, depth: 8.1 mm, color: light grey (7035)

Electronic housing - ME MAX 90 U-U1 KMGY



2200546

<https://www.phoenixcontact.com/pc/products/2200546>

Fiber optic

Fiber optic - HS LC-H-D3/ R1XC1 - 2202313

<https://www.phoenixcontact.com/pc/products/2202313>

Multiple light guides, passive, rigid, can be used for the ME, ME-MAX, ME-IO, ME PLC, and EH housing ranges (housing must be processed)



Fiber optic

Fiber optic - HS LC-H-5X2/ R1XC1 - 2202314

<https://www.phoenixcontact.com/pc/products/2202314>

Single light guide, passive, rigid, can be used for the ME, ME-MAX, ME-IO, ME PLC, and EH housing ranges (housing must be processed)



2200546

<https://www.phoenixcontact.com/pc/products/2200546>

Fiber optic

Fiber optic - HS LC-H-D3/ R2XC1-5,08 - 2202315

<https://www.phoenixcontact.com/pc/products/2202315>

Multiple light guides, passive, rigid, can be used for the ME, ME-MAX, ME-IO, ME PLC, and EH housing ranges (housing must be processed)



Fiber optic

Fiber optic - HS LC-H-D2/ R2XC1-2,54 - 2202316

<https://www.phoenixcontact.com/pc/products/2202316>

Multiple light guides with glare protection, passive, rigid, can be used for the ME, ME-MAX, ME-IO, ME PLC, and EH housing ranges (housing must be processed)



2200546

<https://www.phoenixcontact.com/pc/products/2200546>

Fiber optic

Fiber optic - HS LC-H-D2/ R2XC2-2,54 - 2202317

<https://www.phoenixcontact.com/pc/products/2202317>



Multiple light guides with glare protection, passive, rigid, can be used for the ME, ME-MAX, ME-IO, ME PLC, and EH housing ranges (housing must be processed)

Fiber optic

Fiber optic - HS LC-H-D2/ R2XC5-2,54 - 2202318

<https://www.phoenixcontact.com/pc/products/2202318>



Multiple light guides with glare protection, passive, rigid, can be used for the ME, ME-MAX, ME-IO, ME PLC, and EH housing ranges (housing must be processed)

Electronic housing - ME MAX 90 U-U1 KMGY

2200546

<https://www.phoenixcontact.com/pc/products/2200546>

Fiber optic

Fiber optic - HS LC-H-D2/ R2XC10-2,54 - 2202319

<https://www.phoenixcontact.com/pc/products/2202319>

Multiple light guides with glare protection, passive, rigid, can be used for the ME, ME-MAX, ME-IO, ME PLC, and EH housing ranges (housing must be processed)



Fiber optic

Fiber optic - HS LC-H-D2/ R4XC2-2,54 - 2202320

<https://www.phoenixcontact.com/pc/products/2202320>

Multiple light guides with glare protection, passive, rigid, can be used for the ME, ME-MAX, ME-IO, ME PLC, and EH housing ranges (housing must be processed)



2200546

<https://www.phoenixcontact.com/pc/products/2200546>

Fiber optic

Fiber optic - HS LC-H-D2/ R4XC5-2,54 - 2202321

<https://www.phoenixcontact.com/pc/products/2202321>



Multiple light guides with glare protection, passive, rigid, can be used for the ME, ME-MAX, ME-IO, ME PLC, and EH housing ranges (housing must be processed)

Fiber optic

Fiber optic - HS LC-H-D2/ R4XC9-2,54 - 2202322

<https://www.phoenixcontact.com/pc/products/2202322>



Multiple light guides with glare protection, passive, rigid, can be used for the ME, ME-MAX, ME-IO, ME PLC, and EH housing ranges (housing must be processed)

Electronic housing - ME MAX 90 U-U1 KMGY

2200546

<https://www.phoenixcontact.com/pc/products/2200546>

Fiber optic

Fiber optic - HS LC-H-D2/ R4XC10-2,54 - 2202323

<https://www.phoenixcontact.com/pc/products/2202323>



Multiple light guides with glare protection, passive, rigid, can be used for the ME, ME-MAX, ME-IO, ME PLC, and EH housing ranges (housing must be processed)

Functional ground contact

Functional ground contact - ME BUS FE CONTACT - 2278076

<https://www.phoenixcontact.com/pc/products/2278076>



DIN rail housing, FE contact, width: 5 mm, height: 15.25 mm, depth: 9.5 mm, color: silver

2200546

<https://www.phoenixcontact.com/pc/products/2200546>

Fiber optic

Fiber optic - HS LC-H-D2C/ R2XC1-2,54 - 1036658

<https://www.phoenixcontact.com/pc/products/1036658>



Multiple light guides with glare protection, passive, rigid, can be used for the ME, ME-MAX, ME-IO, ME PLC, and EH housing ranges (housing must be processed)

Fiber optic

Fiber optic - HS LC-H-D2C/ R2XC2-2,54 - 1043044

<https://www.phoenixcontact.com/pc/products/1043044>



Multiple light guides with glare protection, passive, rigid, can be used for the ME, ME-MAX, ME-IO, ME PLC, and EH housing ranges (housing must be processed)

Electronic housing - ME MAX 90 U-U1 KMGY

2200546

<https://www.phoenixcontact.com/pc/products/2200546>

Fiber optic

Fiber optic - HS LC-H-D2C/ R2XC5-2,54 - 1071310

<https://www.phoenixcontact.com/pc/products/1071310>



Multiple light guides with glare protection, passive, rigid, can be used for the ME, ME-MAX, ME-IO, ME PLC, and EH housing ranges (housing must be processed)

Fiber optic

Fiber optic - HS LC-H-D2C/ R2XC10-2,54 - 1071314

<https://www.phoenixcontact.com/pc/products/1071314>



Multiple light guides with glare protection, passive, rigid, can be used for the ME, ME-MAX, ME-IO, ME PLC, and EH housing ranges (housing must be processed)

2200546

<https://www.phoenixcontact.com/pc/products/2200546>

Fiber optic

Fiber optic - HS LC-H-D2C/ R4XC2-2,54 - 1071316

<https://www.phoenixcontact.com/pc/products/1071316>



Multiple light guides with glare protection, passive, rigid, can be used for the ME, ME-MAX, ME-IO, ME PLC, and EH housing ranges (housing must be processed)

Fiber optic

Fiber optic - HS LC-H-D2C/ R4XC5-2,54 - 1071318

<https://www.phoenixcontact.com/pc/products/1071318>



Multiple light guides with glare protection, passive, rigid, can be used for the ME, ME-MAX, ME-IO, ME PLC, and EH housing ranges (housing must be processed)

Electronic housing - ME MAX 90 U-U1 KMGY

2200546

<https://www.phoenixcontact.com/pc/products/2200546>

Fiber optic

Fiber optic - HS LC-H-D2C/ R4XC9-2,54 - 1071321

<https://www.phoenixcontact.com/pc/products/1071321>



Multiple light guides with glare protection, passive, rigid, can be used for the ME, ME-MAX, ME-IO, ME PLC, and EH housing ranges (housing must be processed)

Fiber optic

Fiber optic - HS LC-H-D2C/ R4XC10-2,54 - 1071329

<https://www.phoenixcontact.com/pc/products/1071329>



Multiple light guides with glare protection, passive, rigid, can be used for the ME, ME-MAX, ME-IO, ME PLC, and EH housing ranges (housing must be processed)

Electronic housing - ME MAX 90 U-U1 KMGY

2200546

<https://www.phoenixcontact.com/pc/products/2200546>

Base latch

Base latch - ME MF 17,5 - 2908281

<https://www.phoenixcontact.com/pc/products/2908281>

Metal foot catch with spring, for intermediate elements.

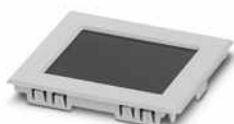


Display

Display - DFC T 2,4 QVGA S 7035 - 2203537

<https://www.phoenixcontact.com/pc/products/2203537>

TFT module 2.4", 320 x 240 pixels, transmissive, LED backlight, interface: SPI, operating temperature: -20°C ... 70°C; frame color (RAL): light gray (7035)



2200546

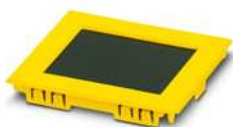
<https://www.phoenixcontact.com/pc/products/2200546>

Display

Display - DFC T 2,4 QVGA S 1018 - 2203538

<https://www.phoenixcontact.com/pc/products/2203538>

TFT module 2.4", 320 x 240 pixels, transmissive, LED backlight, interface: SPI, operating temperature: -20°C ... 70°C; frame color (RAL): yellow (1018)

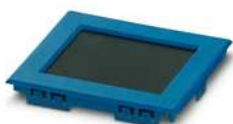


Display

Display - DFC T 2,4 QVGA S 5015 - 2203539

<https://www.phoenixcontact.com/pc/products/2203539>

TFT module 2.4", 320 x 240 pixels, transmissive, LED backlight, interface: SPI, operating temperature: -20°C ... 70°C; frame color (RAL): blue (5015)



2200546

<https://www.phoenixcontact.com/pc/products/2200546>

DIN rail bus connectors

DIN rail bus connectors - ME 22,5 TBUS 1,5/4P1S KMGY - 2201732

<https://www.phoenixcontact.com/pc/products/2201732>



DIN rail connector, color: light grey, nominal current: 8 A, 8 A (parallel contacts) (Serial contacts), rated voltage (III/2): 50 V, number of positions: 5, pitch: 3.81 mm, mounting: DIN rail mounting, locking: without, mounting: without, Item with gold-plated contacts, bus connectors for connecting with electronics housings, 4 parallel contacts/1 serial contact

DIN rail bus connectors

DIN rail bus connectors - ME 22,5 TBUS 1,5/ 5-ST-3,81 KMGY - 2713722

<https://www.phoenixcontact.com/pc/products/2713722>



DIN rail connector, color: light grey, nominal current: 8 A (parallel contacts), rated voltage (III/2): 125 V, contact surface: Gold, number of positions: 5, pitch: 3.81 mm, mounting: DIN rail mounting, locking: without, mounting: without, type of packaging: packed in cardboard, Item with gold-plated contacts, bus connectors for connecting with electronics housings, 5 parallel contacts

Electronic housing - ME MAX 90 U-U1 KMGY

2200546

<https://www.phoenixcontact.com/pc/products/2200546>

DIN rail bus connectors

DIN rail bus connectors - ME 22,5 TBUS ADAPTER KMGY - 2201756

<https://www.phoenixcontact.com/pc/products/2201756>

DIN rail bus adapter for ME and ME-MAX, design width: 22.5 mm, 5 parallel positions, color: light gray (similar to RAL 7035)



Power connector

Power connector - PCO 22,5-L KMGY - 2201685

<https://www.phoenixcontact.com/pc/products/2201685>

Power connector for ME-MAX housing, design width: 22.5 mm, 2-pos., used to transmit a total current of up to 42 A at 60 V DC.



Electronic housing - ME MAX 90 U-U1 KMGY

2200546

<https://www.phoenixcontact.com/pc/products/2200546>

Filler plugs

Filler plugs - ME MAX TBUS BS KMGY - 2199650

<https://www.phoenixcontact.com/pc/products/2199650>

DIN rail housing, Filler plugs for TBUS recess, width: 5.8 mm, height: 30 mm, depth: 6.6 mm, color: light grey (7035)



End clamp

End clamp - E/ME TBUS NS35 GY - 2713780

<https://www.phoenixcontact.com/pc/products/2713780>

End clamp, stable construction for DIN rail bus connector



2200546

<https://www.phoenixcontact.com/pc/products/2200546>

PCB connector

PCB connector - MC 1,5/ 5-ST-3,81 AU - 1860883

<https://www.phoenixcontact.com/pc/products/1860883>



PCB connector, nominal cross section: 1.5 mm², color: green, nominal current: 8 A, rated voltage (III/2): 160 V, contact surface: Gold, type of contact: Female connector, number of potentials: 5, number of rows: 1, number of positions: 5, number of connections: 5, product range: MC 1,5/...-ST, pitch: 3.81 mm, connection method: Screw connection with tension sleeve, screw head form: L Slotted, conductor/PCB connection direction: 0 °, pin layout: Linear three-way pinning, number of solder pins per potential: 1, plug-in system: COMBICON MC 1,5, locking: without, mounting: without, type of packaging: packed in cardboard

Printed-circuit board connector

Printed-circuit board connector - IMC 1,5/ 5-ST-3,81 - 1857919

<https://www.phoenixcontact.com/pc/products/1857919>



PCB connector, nominal cross section: 1.5 mm², color: green, nominal current: 8 A, rated voltage (III/2): 160 V, contact surface: Tin, type of contact: Male connector, number of potentials: 5, number of rows: 1, number of positions: 5, number of connections: 5, product range: IMC 1,5/...-ST, pitch: 3.81 mm, connection method: Screw connection with tension sleeve, screw head form: L Slotted, conductor/PCB connection direction: 0 °, number of solder pins per potential: 1, plug-in system: COMBICON MC 1,5, locking: without, mounting: without, type of packaging: packed in cardboard

Electronic housing - ME MAX 90 U-U1 KMGY

2200546

<https://www.phoenixcontact.com/pc/products/2200546>

Cross connection

Cross connection - PBR 42A BU - 2201916

<https://www.phoenixcontact.com/pc/products/2201916>



Jumper for PCO power connector in ME-MAX housing, color: blue (similar to RAL 5015)

Cross connection

Cross connection - PBR 42A GY - 2201917

<https://www.phoenixcontact.com/pc/products/2201917>



Jumper for PCO power connector in ME-MAX housing, color: gray (similar to RAL 7042)

2200546

<https://www.phoenixcontact.com/pc/products/2200546>

Cross connection

Cross connection - PBR 42A RD - 2201915

<https://www.phoenixcontact.com/pc/products/2201915>



Jumper for PCO power connector in ME-MAX housing, color: red (similar to RAL 3000)

Shield connection clamp

Shield connection clamp - ME-SAS - 2853899

<https://www.phoenixcontact.com/pc/products/2853899>



Shield connection clamp for terminal points starting from 2.5 mm²

Electronic housing - ME MAX 90 U-U1 KMGY



2200546

<https://www.phoenixcontact.com/pc/products/2200546>

Coding section

Coding section - CR MSTBO-G1 - 2199618

<https://www.phoenixcontact.com/pc/products/2199618>

Coding section, inserted into the recess in the header or the inverted plug, red insulating material



Phoenix Contact 2023 © - all rights reserved

<https://www.phoenixcontact.com>

PHOENIX CONTACT GmbH & Co. KG

Flachsmarktstraße 8

D-32825 Blomberg

+49 (0) 5235-3 00

info@phoenixcontact.com