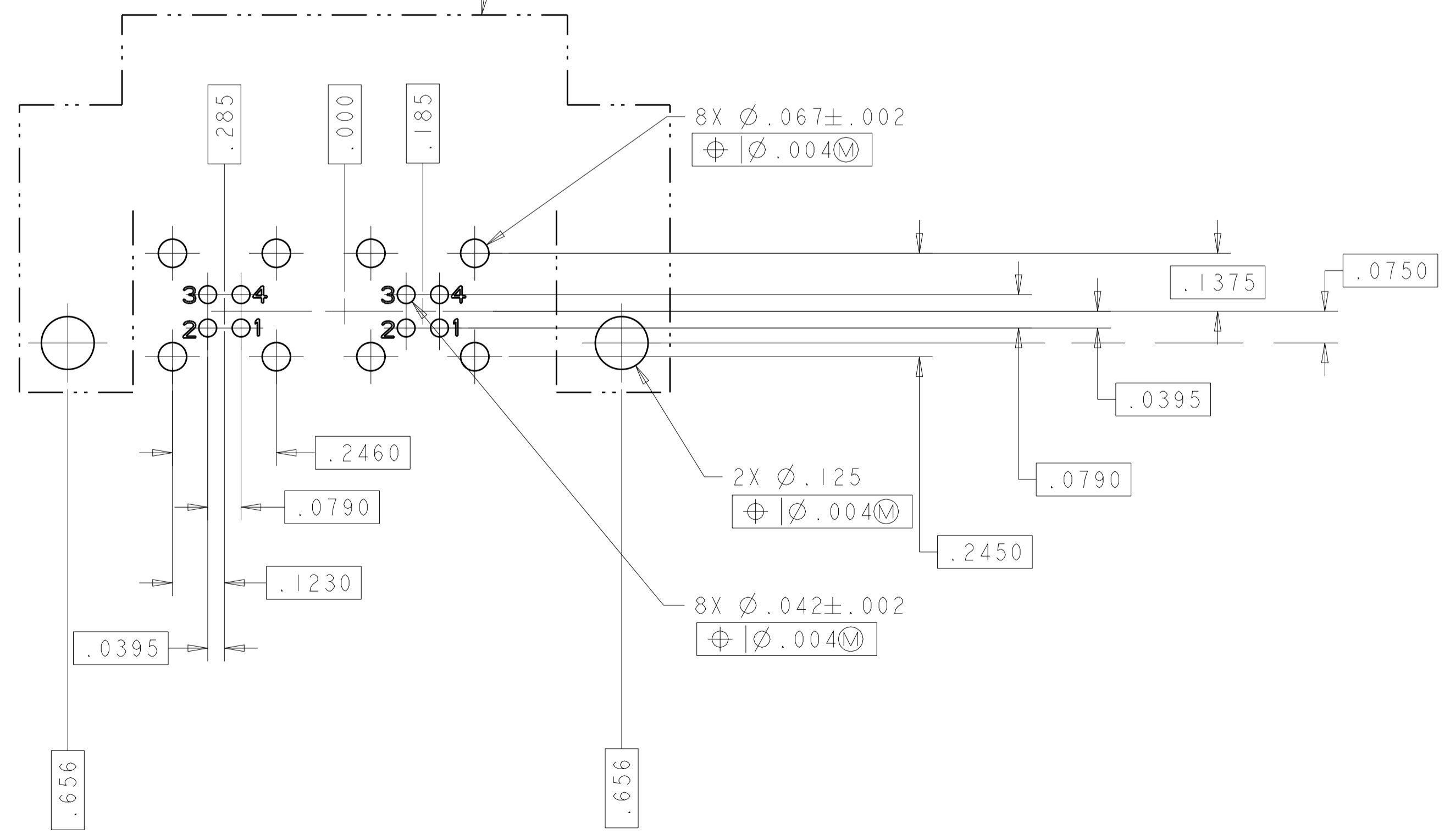
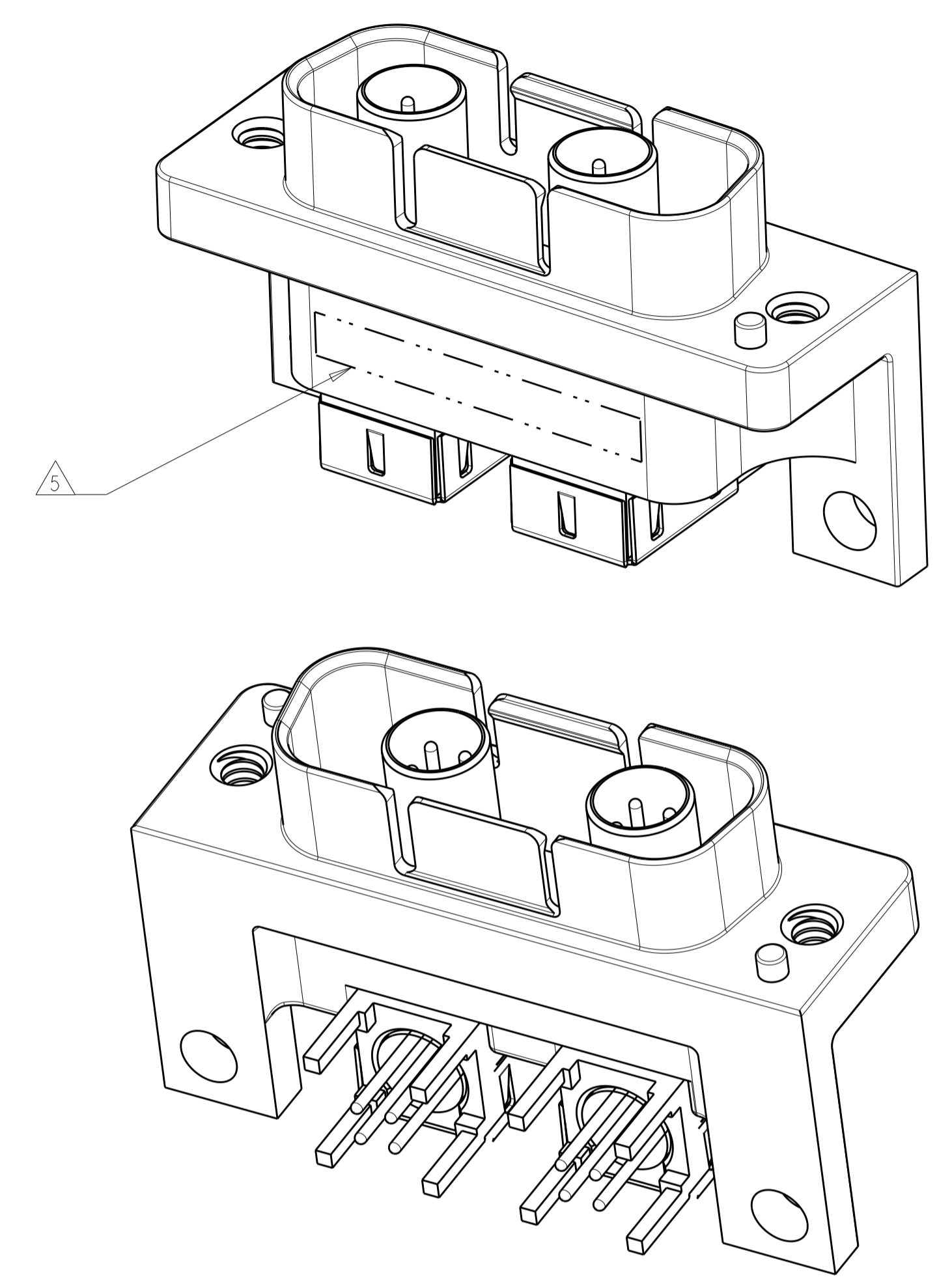
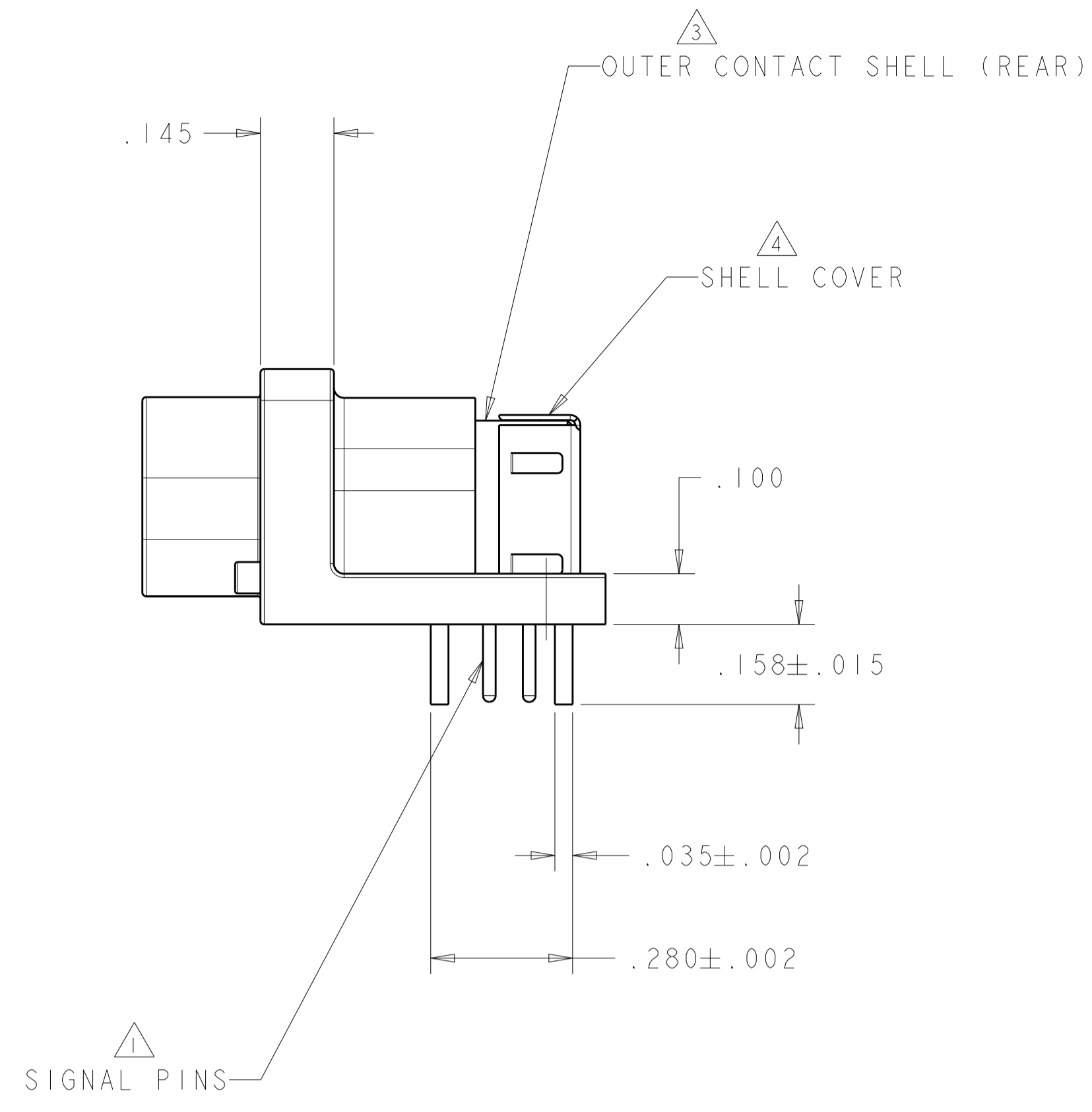
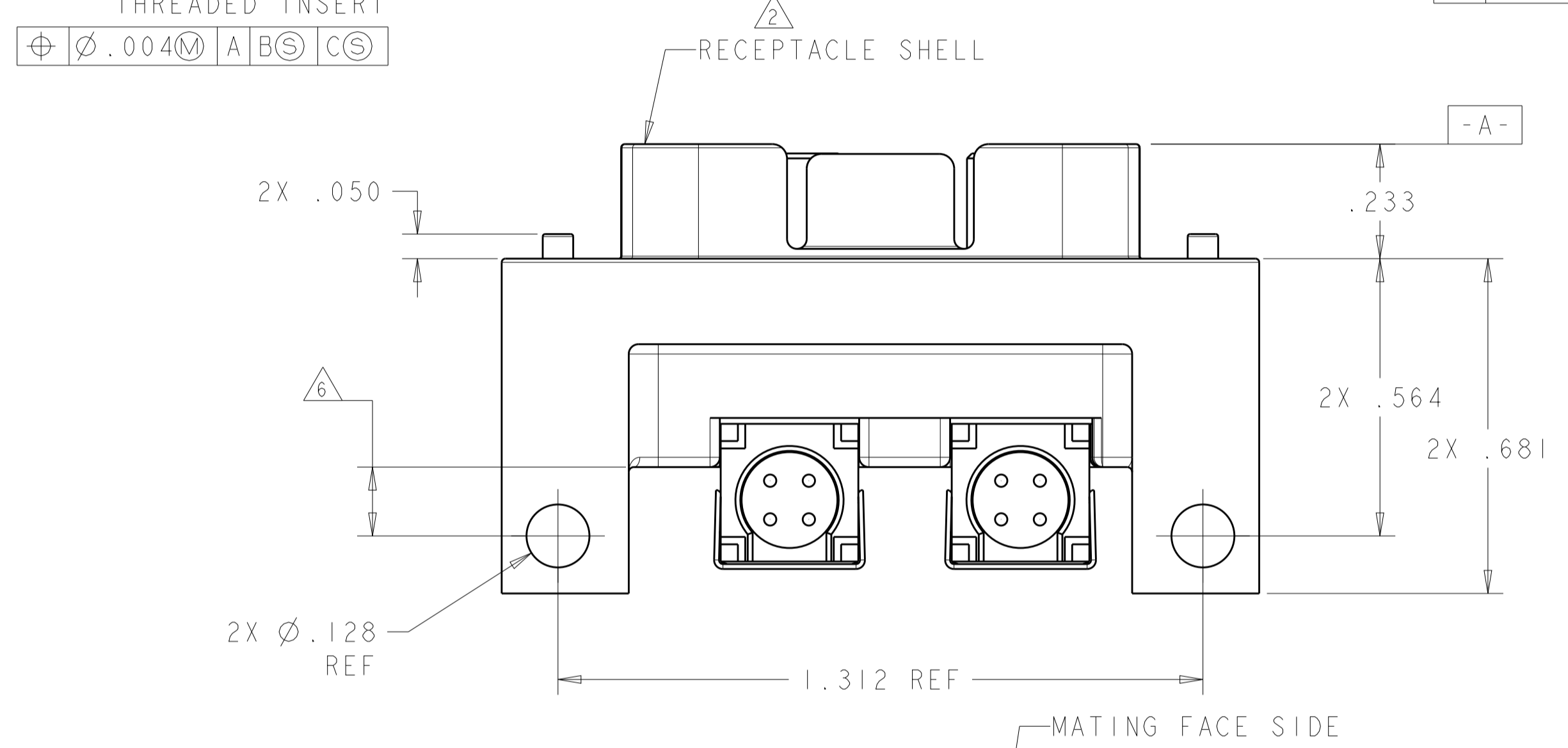
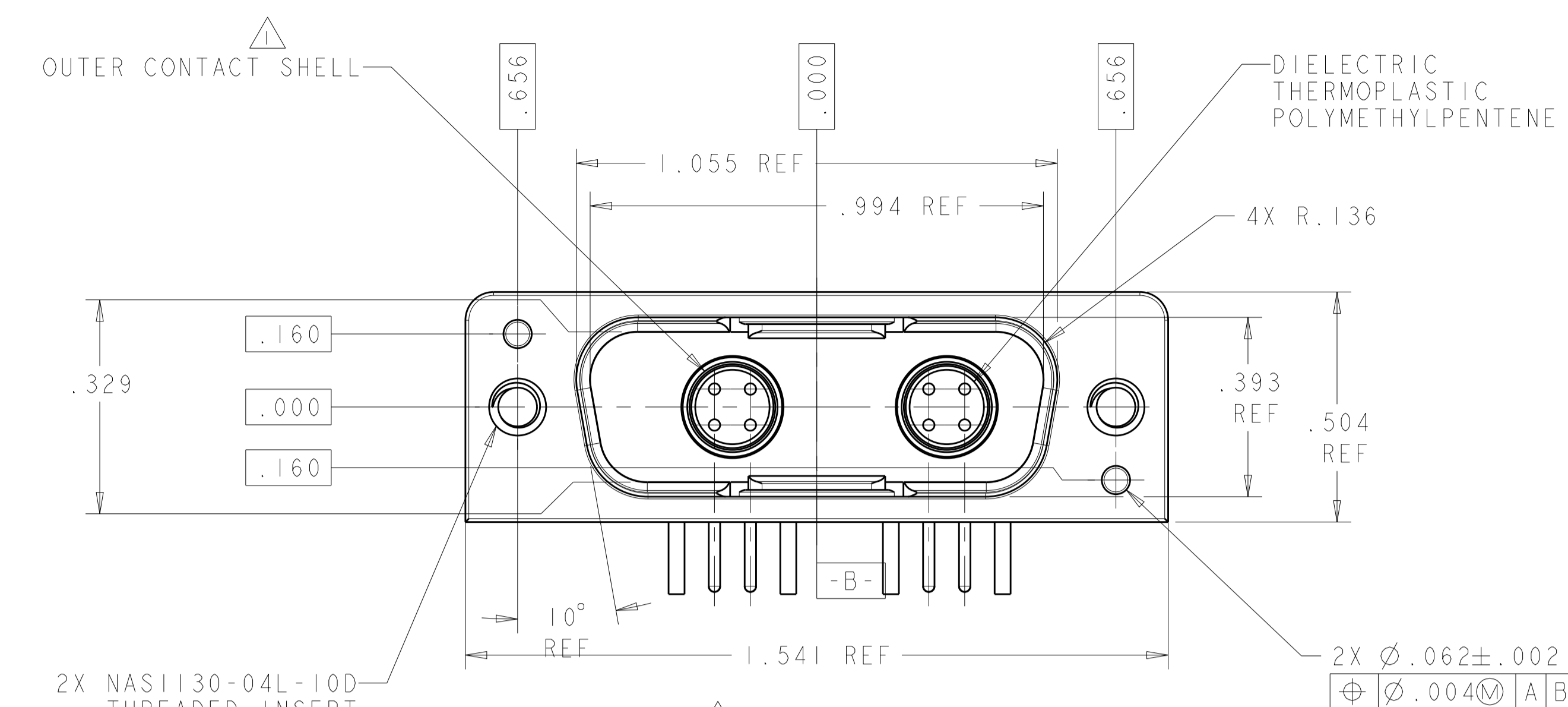


REVISONS		DATE	DMN	APVD
LOC	DIST	DESCRIPTION		
-	-	D REV PER ECO 13-008053	5-14-13	CT DM



- ① BRASS PER ASTM B16 PLATED GOLD, .000050 MIN PER ASTM B488, TYPE 2, GRADE C OVER .000050 MIN NICKEL PER QQ-N-290.
- ② ALUMINUM ALLOY 6061-T6 PER ASTM B221 PLATED ELECTROLESS NICKEL, .00100 MIN PER AMS-C-26074 CLASS 1.
- ③ BRASS PER ASTM B16 PLATED GOLD, .000015 MIN PER ASTM B488, TYPE 2, GRADE C OVER .000050 MIN NICKEL PER QQ-N-290.
- ④ PHOSPHOR BRONZE PER ASTM B103 PLATED GOLD, .000015 MIN PER ASTM B488, TYPE 2, GRADE C OVER .000050 MIN NICKEL PER QQ-N-290.
- ⑤ CONNECTOR IS MARKED WITH TE, TE CONNECTIVITY PART NUMBER AND DATE CODE, IN APPROXIMATE AREA SHOWN.
- ⑥ NO RADIUS ALLOWED .130 FROM HOLE  $\varnothing$  OPPOSITE SIDE FOR MOUNTING HARDWARE CLEARANCE. (2X)

AS SHOWN	2157447-1
DESCRIPTION	PART NUMBER

THIS DRAWING IS A CONTROLLED DOCUMENT.		DMN R. GLATFELT 25FEB2011	DATE 25FEB2011										
DIMENSIONS: INCHES		CHK D. MILLER 25FEB2011	NAME D. MILLER 25FEB2011										
TOLERANCES UNLESS OTHERWISE SPECIFIED:		APVD D. MILLER 25FEB2011	PRODUCT SPEC										
<table border="1"> <tr><td>0 PLC</td><td>±</td></tr> <tr><td>1 PLC</td><td>±.01</td></tr> <tr><td>2 PLC</td><td>±.01</td></tr> <tr><td>3 PLC</td><td>±.005</td></tr> <tr><td>4 PLC</td><td>±</td></tr> </table>		0 PLC	±	1 PLC	±.01	2 PLC	±.01	3 PLC	±.005	4 PLC	±	APPLICATION SPEC	RESTRICTED TO
0 PLC	±												
1 PLC	±.01												
2 PLC	±.01												
3 PLC	±.005												
4 PLC	±												
MATERIAL SEE CALL OUT	FINISH SEE CALL OUT	WEIGHT	SCALE 4:1 SHEET 1 OF 1 REV D										
CUSTOMER DRAWING		SIZE A1	CAGE CODE 2157447										