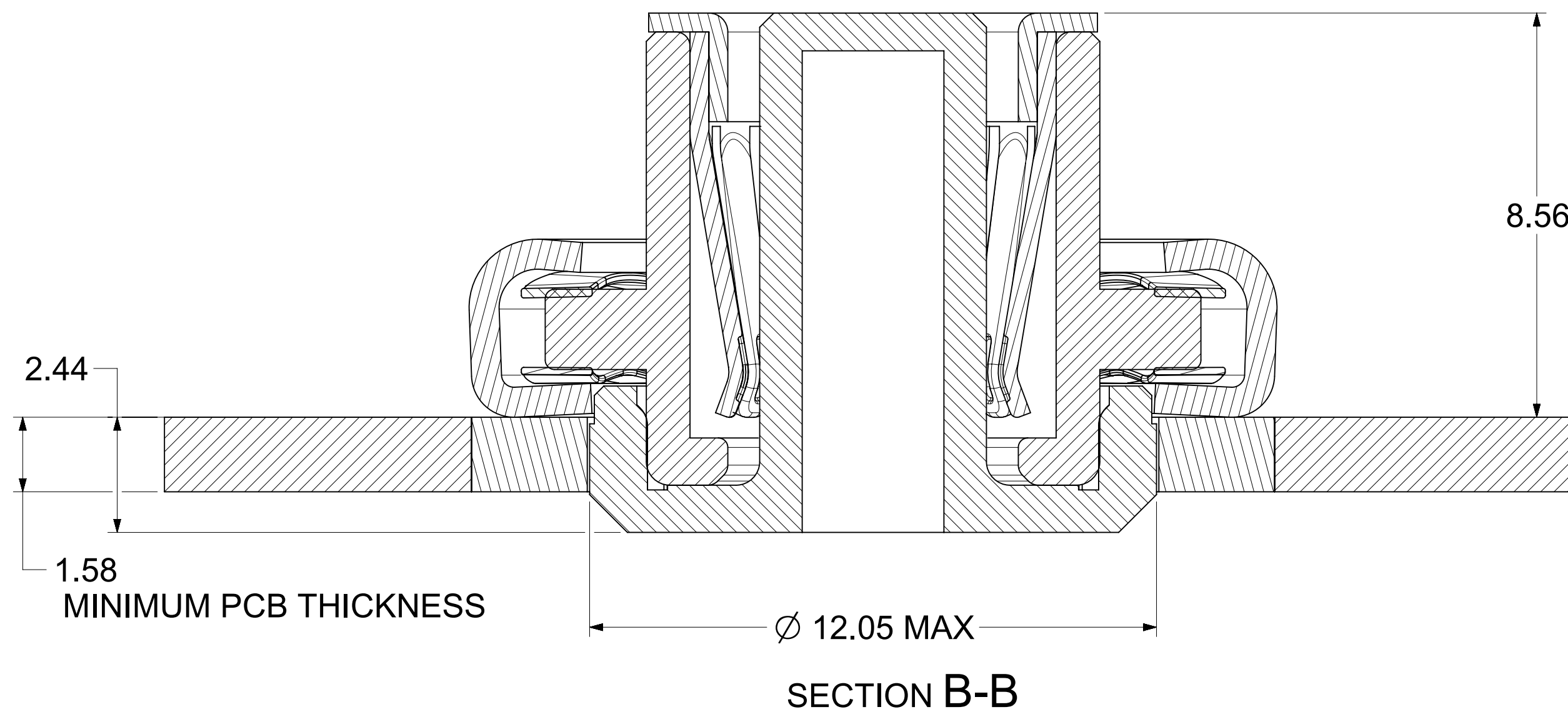
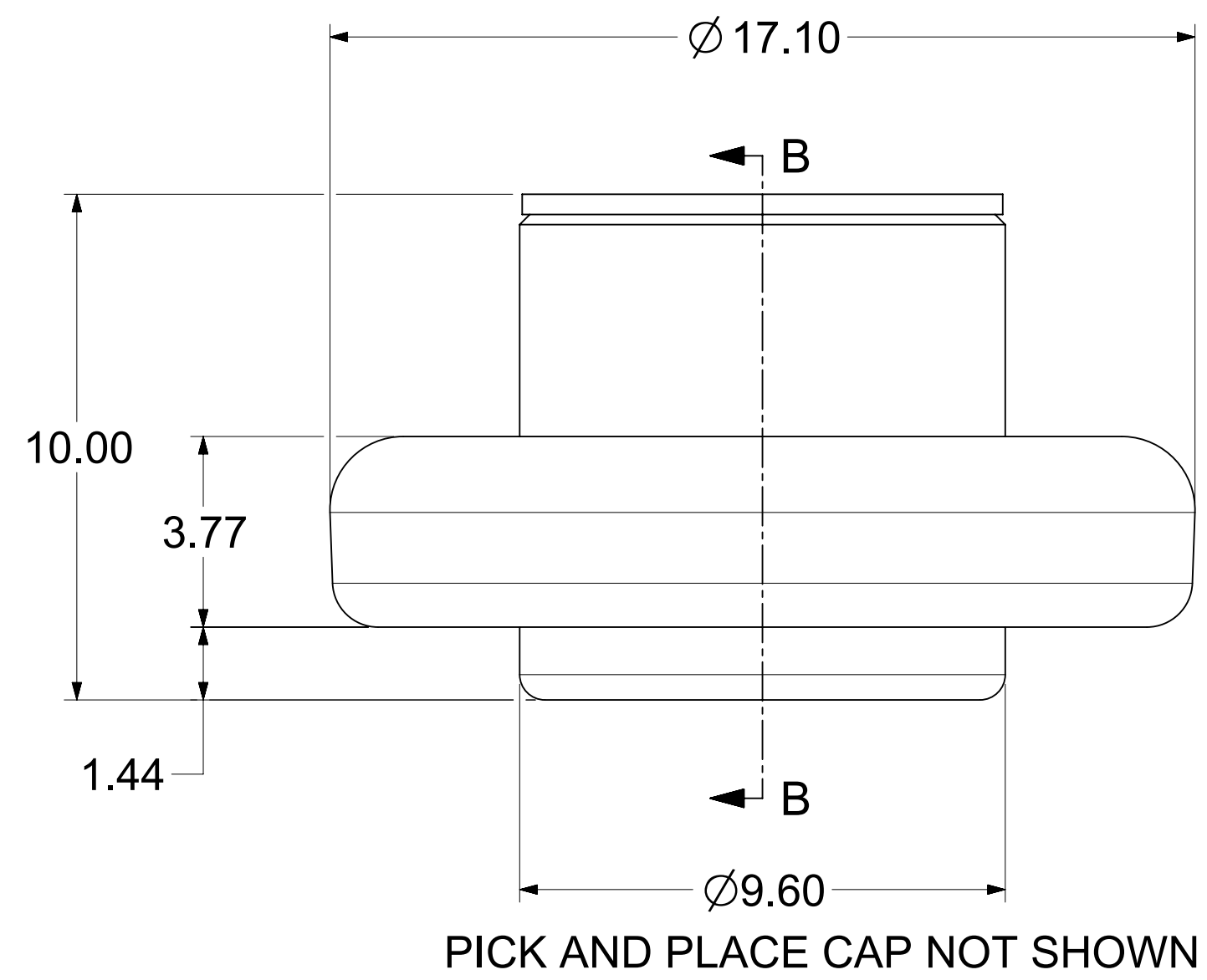
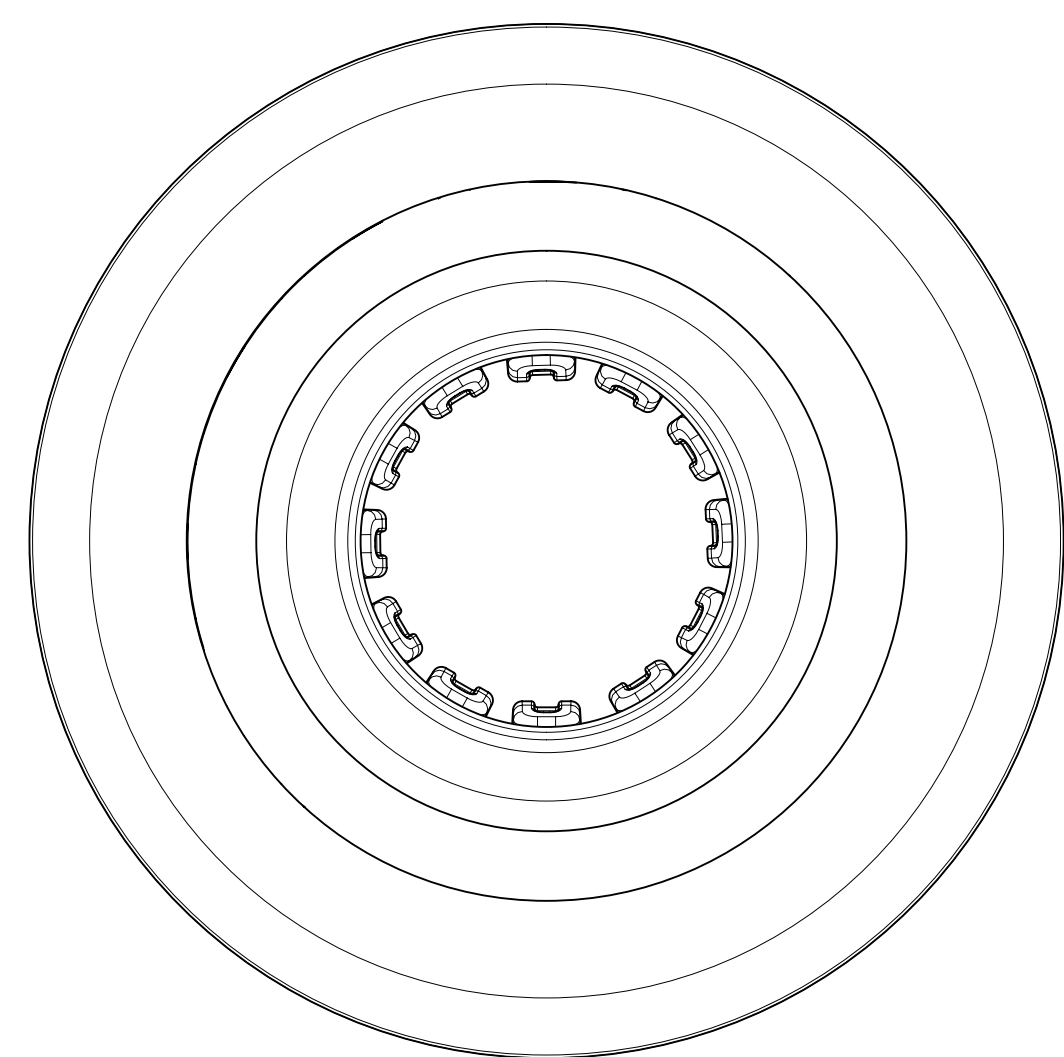


MATING PROFILE



- NOTES:**
1. MATERIALS: COPPER ALLOY
 2. PLATING
 - i. CONTACT AREA: GOLD
 - ii. REST: SILVER WITH TARNISH INHIBITOR
 3. MATES WITH STANDARD PIN DRAWINGS (MATING DISTANCE BASED ON 1.58MM BOARD THICKNESS):
 - i. 6.0MM SMT DRAWING 2032630136-SD, MIN. MATING DISTANCE 3.3MM
 - ii. 6.0MM PRESS FIT DRAWING 2032630006-SD, MIN. MATING DISTANCE 2.75MM
 - iii. 6.0MM SCREW MOUNT DRAWING 2032636185-SD, MIN. MATING DISTANCE 5.80MM
 4. PRODUCT SPECIFICATION: 2043130006-PS
 5. APPLICATION SPECIFICATION: 2043130006-AS
SEE APPLICATION SPEC FOR SOLDERING INFORMATION.
 6. PACKAGING SPECIFICATION: 2121950016-PK
 7. SILVER COMPONENTS WILL BE SUPPLIED TARNISH FREE BUT MAY TARNISH OVER TIME.
 8. PICK AND PLACE CAP TO BE REMOVED AFTER SOLDERING. CAP TO BE PUSHED OUT OF BOTTOM FROM THE TOP.
 9. DATE CODE TO BE LASER MARKED APPROXIMATELY WHERE SHOWN USING DDYY FORMAT



THIS DRAWING CONTAINS INFORMATION THAT IS PROPRIETARY TO MOLEX ELECTRONIC TECHNOLOGIES, LLC AND SHOULD NOT BE USED WITHOUT WRITTEN PERMISSION											
DIMENSION UNITS	SCALE	CURRENT REV DESC: UPDATED THE TITLE BLOCK									
mm	NTS	molex									
GENERAL TOLERANCES (UNLESS SPECIFIED)		6.0MM CENTRALITY BOTTOM ENTRY SMT SOCKET WITH FLOAT IN T&R									
ANGULAR TOL ± 0.5°		PRODUCT CUSTOMER DRAWING									
4 PLACES ±		EC NO: 747243									
3 PLACES ±		DRWN: SACHIK7	2023/02/28								
2 PLACES ± 0.15		CHK'D: SCS02	2023/04/25								
1 PLACE ± 0.25		APPR: HTHYAGARAJ	2023/04/26								
0 PLACES ±		INITIAL REVISION:									
DRAFT WHERE APPLICABLE MUST REMAIN WITHIN DIMENSIONS		DRWN: MZHANG162	2020/08/25								
		APPR: BPISZCZOR	2020/11/25								
THIRD ANGLE PROJECTION	DRAWING	SERIES	MATERIAL NUMBER	CUSTOMER	SHEET NUMBER						
	D-SIZE	212195	2121950046	GENERAL MARKET	1 OF 1						