

THIS DRAWING IS UNPUBLISHED.

RELEASED FOR PUBLICATION

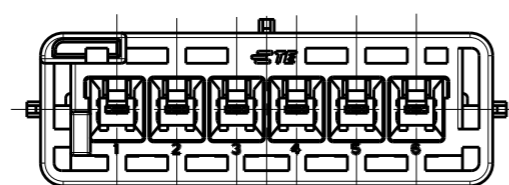
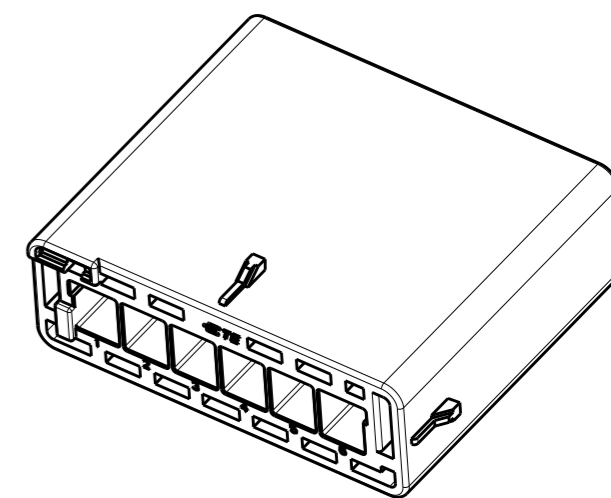
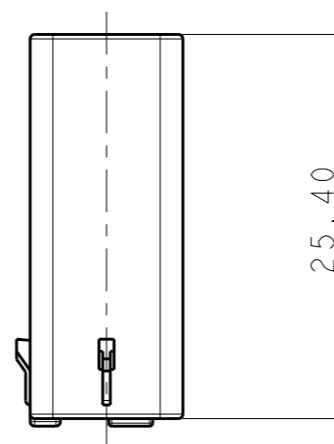
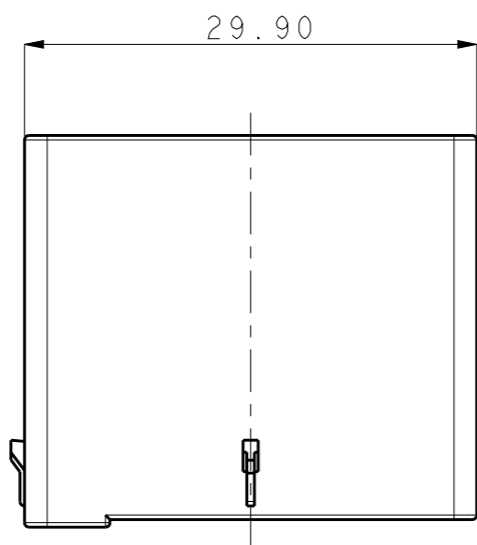
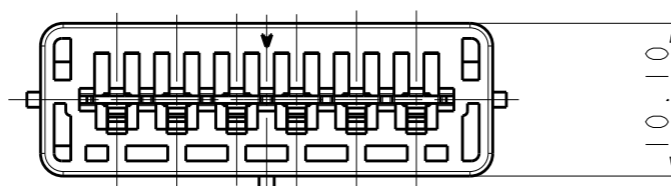
20

© COPYRIGHT 20 BY -

ALL RIGHTS RESERVED.

REVISIONS

P	LTR	DESCRIPTION	DATE	DWN	APVD
	A	RELEASED	05DEC2016	BH	BW
	A1	REVISED PER ECR-19-016175	18OCT2019	M.G	D.Z
	A2	REVISED PER ECR-20-007446	15JUN2020	M.G	D.Z



- NOTES.
1. GENERAL TOLERANCE : ± 0.3
 2. APPLICABLE CONTACT PART NUMBERS :
1743728-1, 1743729-1
1-2232902-2, 1-2232901-2
 3. APPLICABLE TPA P/N : 2108963-1

COPPER ALLOY	-	POST CONTACT	I	2108960-1
PA66	NATURAL	DISTRIBUTION HSG	I	
MATERIAL	COLOR	DESCRIPTION	Q'TY	PART NO.

THIS DRAWING IS A CONTROLLED DOCUMENT.		DWN	06DEC2016		TE TE Connectivity		
DIMENSIONS: mm		CHK	-				
		APVD	-				
		PRODUCT SPEC	108-61268				
MATERIAL		FINISH	-		NAME	DISTRIBUTION CONNECTOR	
SEE TABLE		TOLERANCES UNLESS OTHERWISE SPECIFIED:		APPLICATION SPEC	114-61016		RESTRICTED TO
		0 PLC \pm		WEIGHT	-		
		1 PLC \pm		CUSTOMER DRAWING	SCALE 2:1		SHEET 1 OF 1
		2 PLC \pm		SIZE A3		CAGE CODE -	
		3 PLC \pm		DRAWING NO C-2108960		REV A2	
		4 PLC \pm		SCALE 2:1		SHEET 1 OF 1	
		ANGLES \pm		SCALE 2:1		SHEET 1 OF 1	