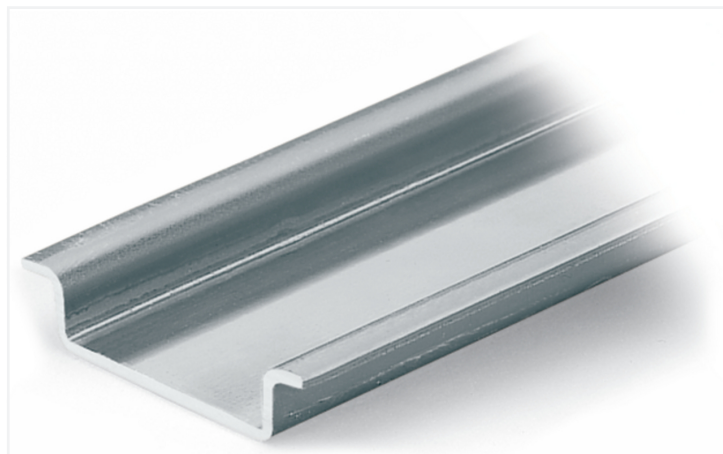


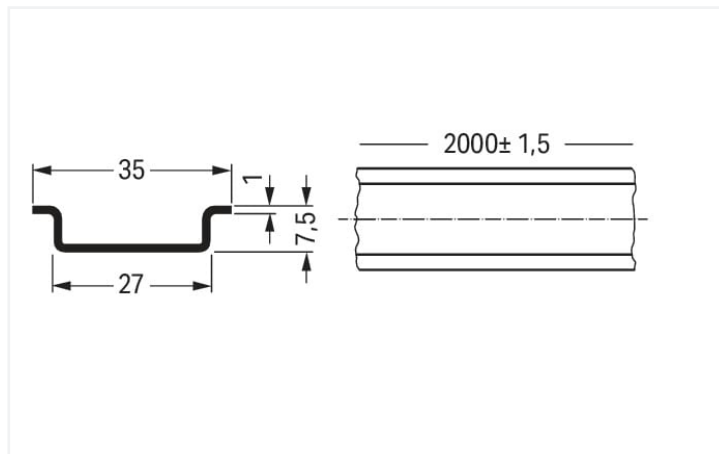
Data Sheet | Item Number: 210-113

Steel carrier rail; 35 x 7.5 mm; 1 mm thick; 2 m long; unslotted; according to EN 60715; silver-colored

<https://www.wago.com/210-113>



Color: ■ silver-colored



Dimensions in mm

Physical data

Width	2000 mm / 78.74 inches
Height	7.5 mm / 0.295 inches
Depth	35 mm / 1.378 inches

Material data

Color	silver-colored
Fire load	0 MJ
Weight	690 g

Commercial data

Product Group	2 (Terminal Block Accessories)
eCl@ss 10.0	27-40-06-02
eCl@ss 9.0	27-40-06-02
ETIM 9.0	EC001285
ETIM 8.0	EC001285
PU (SPU)	10 (1) pcs
Packaging type	Box
Country of origin	IT
GTIN	4017332272308
Customs tariff number	72169180000

Environmental Product Compliance

RoHS Compliance Status	Compliant, No Exemption
------------------------	-------------------------

Downloads

Environmental Product Compliance

Compliance Search

Environmental Product Compliance 210-113



Documentation

Bid Text

210-113	31.08.2017	doc 23.50 KB	
210-113	19.02.2019	xml 2.64 KB	

CAD/CAE-Data

CAD data

2D/3D Models 210-113



CAE data

EPLAN Data Portal 210-113



WSCAD Universe 210-113



ZUKEN Portal 210-113



1 Compatible Products

1.1 Optional Accessories

1.1.1 Installation

1.1.1.1 Mounting accessories



Item No.: 209-109

Edge guards; for DIN 35 rail (7.5 mm high); gray



Item No.: 209-137

Mounting adapter; can be used as end stop; 6.5 mm wide; gray



Item No.: 249-117

Screwless end stop; 10 mm wide; for DIN-rail 35 x 15 and 35 x 7.5; gray



Item No.: 249-197

Screwless end stop; 14 mm wide; for DIN-rail 35 x 15 and 35 x 7.5; gray



Item No.: 249-116

Screwless end stop; 6 mm wide; for DIN-rail 35 x 15 and 35 x 7.5; gray

1.1.2 Marking

1.1.2.1 Label



Item No.: 210-808

Labels; for Smart Printer; 9.5 x 25 mm; white



Item No.: 210-708

Labels; for TP printers; 9.5 x 25 mm; white

Installation Notes

DIN-Rail	Item No.	Current [A]	Acc. to mm ² /AWG/GU
DIN 35 x 7.5 (steel)			
slotted	210-112	76	16/6
unslotted	210-113	76	16/6
DIN 35 x 15 (steel)			
1.5 mm thick	210-114	125	35/2
2.3 mm thick	210-118	125	35/2
DIN 35 x 7.5 (Al)			
unslotted	210-196	76	16/6
DIN 35 x 15 (Cu)			
2.3 mm thick	210-198	309	150/6/0
Current applies to rails of 1 m/3'3" length			

When using standard DIN-rails as ground conductor busbars, please refer to the maximum current capacities listed above. Steel DIN-rails are not suited for PEN (ground and N-conductor) applications per EN 60947-7-2 (VDE 0611, Part 3).