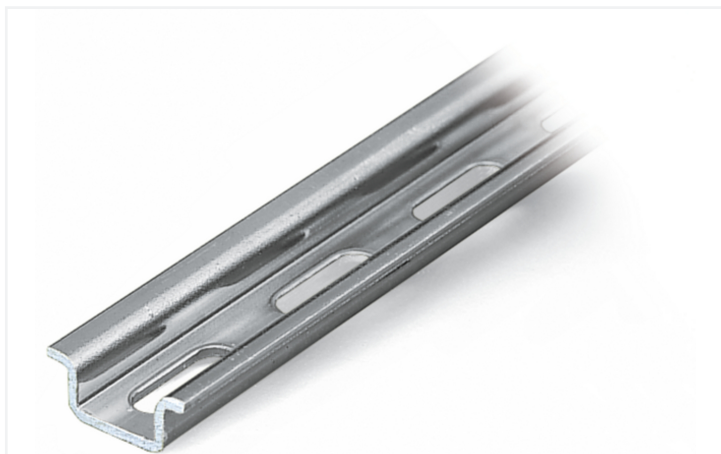


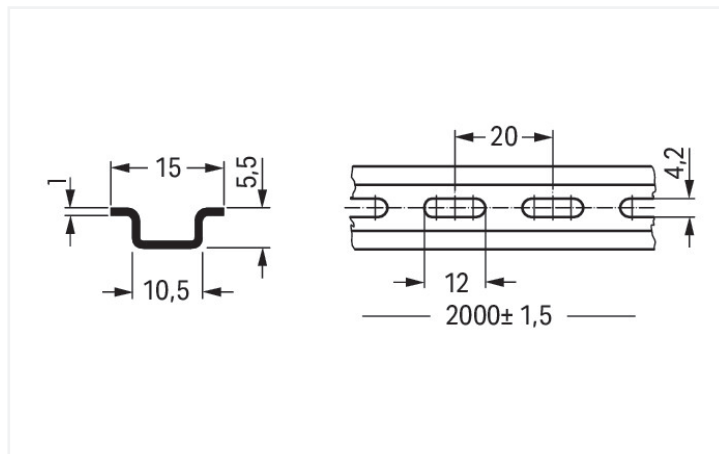
Data Sheet | Item Number: 210-111

Steel carrier rail; 15 x 5.5 mm; 1 mm thick; 2 m long; slotted; according to EN 60715; silver-colored

<https://www.wago.com/210-111>



Color: ■ silver-colored



Dimensions in mm

Physical data

Width	2000 mm / 78.74 inches
Height	5.5 mm / 0.217 inches
Depth	15 mm / 0.591 inches

Material data

Color	silver-colored
Fire load	0 MJ
Weight	285 g

Commercial data

Product Group	2 (Terminal Block Accessories)
eCl@ss 10.0	27-40-06-02
eCl@ss 9.0	27-40-06-02
ETIM 9.0	EC001285
ETIM 8.0	EC001285
PU (SPU)	10 (1) pcs
Packaging type	Box
Country of origin	IT
GTIN	4017332272247
Customs tariff number	72169180000

Environmental Product Compliance

RoHS Compliance Status	Compliant, No Exemption
------------------------	-------------------------

Downloads

Environmental Product Compliance

Compliance Search			
Environmental Product Compliance 210-111			↓

Documentation

Bid Text			
210-111	19.02.2019	xml 2.70 KB	↓
210-111	31.08.2017	doc 23.50 KB	↓

CAD/CAE-Data

CAD data	
2D/3D Models 210-111	↓

CAE data	
EPLAN Data Portal 210-111	↓
WSCAD Universe 210-111	↓
ZUKEN Portal 210-111	↓

1 Compatible Products

1.1 Optional Accessories

1.1.1 Installation

1.1.1.1 Mounting accessories



Item No.: 249-101
Screwless end stop; 6 mm wide; for WMB markers; gray

1.1.2 Marking

1.1.2.1 Label



Item No.: 210-808
Labels; for Smart Printer; 9.5 x 25 mm; white



Item No.: 210-708
Labels; for TP printers; 9.5 x 25 mm; white

Installation Notes

DIN-Rail	Item No.	Current [A]	Acc. to mm ² /AWG Cu
DIN 15 x 5.5 (steel)			
1 mm thick			
slotted	210-111	57	10/8
unslotted	210-295	57	10/8
DIN 15 x 5.5 (Al)			
1 mm thick			
unslotted	210-296	57	10/8

Current applies to rails of 1 m/3'3" length