

## Data Sheet | Item Number: 2091-1123

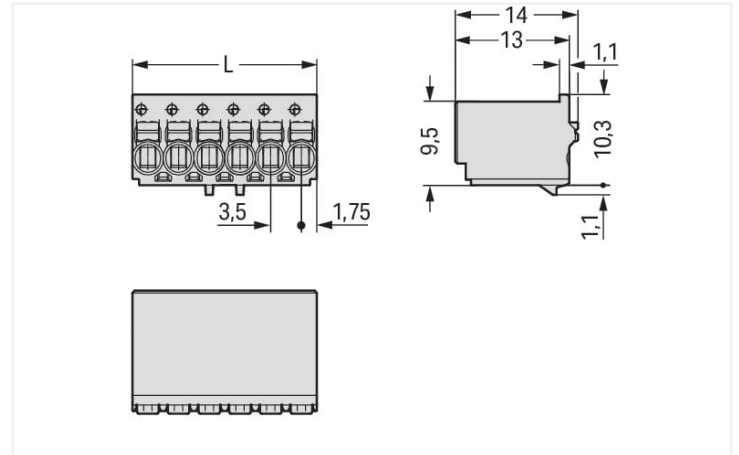
1-conductor female connector; push-button; Push-in CAGE CLAMP®; 1.5 mm<sup>2</sup>; Pin spacing 3.5 mm; 3-pole; 1,50 mm<sup>2</sup>; light gray

<https://www.wago.com/2091-1123>



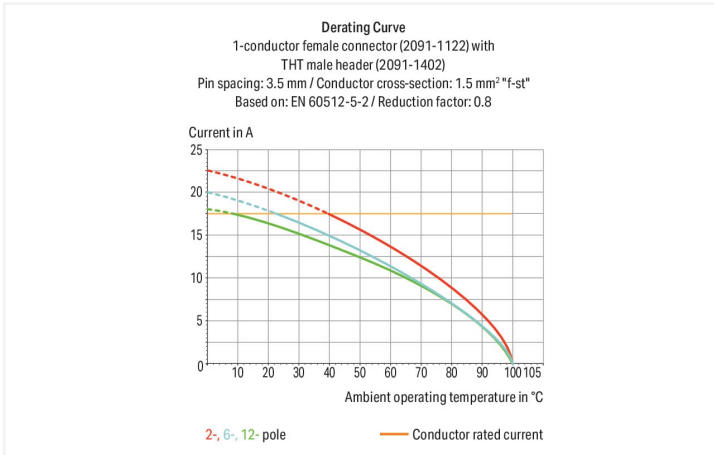
Color: ■ light gray

Similar to illustration



Dimensions in mm

L = (pole no. - 1) x pin spacing



- Universal connection of all conductor types
- Simple, push-in termination of solid and ferruled conductors
- Easy-to-use design does not require special tools
- Ability to wire while mated or unmated
- Testing parallel to conductor entry – tip contact
- Also available with gripping plates
- Integrated locking latches prevent accidental disconnection

### Notes

#### Safety information

The **picoMAX® Pluggable Connection System** includes connectors without breaking capacity in accordance with DIN EN 61984. When used as intended, these connectors must not be connected/disconnected when live or under load. The circuit design should ensure header pins, which can be touched, are not live when unmated.

#### Variants:

Direct marking

Other versions (or variants) can be requested from WAGO Sales or configured at <https://configurator.wago.com/>.

## Electrical data

| Ratings per          | IEC/EN 60664-1 |        |        | Approvals per | UL 1059 |   |       |
|----------------------|----------------|--------|--------|---------------|---------|---|-------|
| Overvoltage category | III            | III    | II     | Use group     | B       | C | D     |
| Pollution degree     | 3              | 2      | 2      | Rated voltage | 300 V   | - | 300 V |
| Nominal voltage      | 160 V          | 160 V  | 320 V  | Rated current | 10 A    | - | 10 A  |
| Rated surge voltage  | 2.5 kV         | 2.5 kV | 2.5 kV |               |         |   |       |
| Rated current        | 10 A           | 10 A   | 10 A   |               |         |   |       |

## Connection data

|                            |   |   |   |
|----------------------------|---|---|---|
| Connection points          | 3 | <b>Connection 1</b>                               |   |
| Total number of potentials | 3 | Connection technology                             | Push-in CAGE CLAMP®                         |
| Number of connection types | 1 | Actuation type                                    | Push-button                                 |
| Number of levels           | 1 | Actuation direction 1                             | Operation parallel to conductor entry       |
|                            |   | Solid conductor                                   | 0.2 ... 1.5 mm <sup>2</sup> / 24 ... 14 AWG |
|                            |   | Fine-stranded conductor                           | 0.2 ... 1.5 mm <sup>2</sup> / 24 ... 14 AWG |
|                            |   | Fine-stranded conductor; with insulated ferrule   | 0.25 ... 0.75 mm <sup>2</sup>               |
|                            |   | Fine-stranded conductor; with uninsulated ferrule | 0.25 ... 1.5 mm <sup>2</sup>                |
|                            |   | Strip length                                      | 8 ... 9 mm / 0.31 ... 0.35 inches           |
|                            |   | Pole number                                       | 3   |

## Physical data

|             |                        |
|-------------|------------------------|
| Pin spacing | 3.5 mm / 0.138 inches  |
| Width       | 10.5 mm / 0.413 inches |
| Height      | 14 mm / 0.551 inches   |
| Depth       | 11.4 mm / 0.449 inches |

## Mechanical data

|                          |     |
|--------------------------|-----|
| Variable coding          | Yes |
| Anti-rotation protection | Yes |

## Plug-in connection

|                                      |                         |
|--------------------------------------|-------------------------|
| Contact type (pluggable connector)   | Female connector/socket |
| Connector (connection type)          | for conductor           |
| Mismating protection                 | No                      |
| Plugging without loss of pin spacing | Yes                     |

## Material data

|                             |  |
|-----------------------------|--|
| Note (material data)        | <a href="#">Information on material specifications can be found here</a> |
| Color                       | light gray   |
| Material group              | I  |
| Insulation material         | Polyphthalamide (PPA GF)   |
| Flammability class per UL94 | V0   |
| Clamping spring material    | Chrome-nickel spring steel (CrNi)  |
| Contact material            | Electrolytic copper (E <sub>Cu</sub> )                                   |
| Contact plating             | Tin  |
| Fire load                   | 0.005 MJ   |
| Weight                      | 1.4 g  |

### Environmental requirements

|                         |                 |
|-------------------------|-----------------|
| Limit temperature range | -60 ... +100 °C |
| Processing temperature  | -35 ... +60 °C  |

### Commercial data

|                       |                         |
|-----------------------|-------------------------|
| Product Group         | 26 (picoMAX Connectors) |
| eCl@ss 10.0           | 27-14-11-06             |
| eCl@ss 9.0            | 27-14-11-06             |
| ETIM 8.0              | EC001284                |
| ETIM 7.0              | EC001284                |
| PU (SPU)              | 200 pcs                 |
| Packaging type        | Box                     |
| Country of origin     | DE                      |
| GTIN                  | 4050821160762           |
| Customs tariff number | 85366990990             |

### Environmental Product Compliance

|                        |                         |
|------------------------|-------------------------|
| RoHS Compliance Status | Compliant, No Exemption |
|------------------------|-------------------------|

### Approvals / Certificates

#### General approvals



| Approval                              | Standard      | Certificate Name |
|---------------------------------------|---------------|------------------|
| CB<br>DEKRA Certification B.V.        | IEC 61984     | NL-49736/A1      |
| CSA<br>DEKRA Certification B.V.       | C22.2         | 2362521          |
| CSA<br>DEKRA Certification B.V.       | C22.2 No. 158 | 2362521          |
| KEMA/KEUR<br>DEKRA Certification B.V. | EN 61984      | 71-102260 REV.1  |
| UL<br>Underwriters Laboratories Inc.  | UL 1977       | E45171           |
| UR<br>Underwriters Laboratories Inc.  | UL 1059       | E45172           |

### Downloads

#### Environmental Product Compliance

##### Compliance Search

Environmental Product  
Compliance 2091-1123



Documentation

| Additional Information |            |                   |  |
|------------------------|------------|-------------------|--|
| Technical Section      | 03.04.2019 | pdf<br>2027.26 KB |  |

CAD/CAE-Data

| CAD data                  |  |
|---------------------------|--|
| 2D/3D Models<br>2091-1123 |  |

| CAE data                  |  |
|---------------------------|--|
| ZUKEN Portal<br>2091-1123 |  |

1 Compatible Products

1.1 System counterpart

1.1.1 Male connector/plug



**Item No.: 2091-1523/020-3000**  
1-conductor male connector; Push-in CAGE CLAMP®; 1.5 mm<sup>2</sup>; Pin spacing 3.5 mm; 3-pole; DIN-35 rail/panel mounting; Snap-in mounting feet; Integrated release lever; direct marking; 1,50 mm<sup>2</sup>; light gray



**Item No.: 2091-1503/002-000**  
1-conductor male connector; Push-in CAGE CLAMP®; 1.5 mm<sup>2</sup>; Pin spacing 3.5 mm; 3-pole; Gripping plate; 1,50 mm<sup>2</sup>; light gray



**Item No.: 2091-1503/002-3000**  
1-conductor male connector; Push-in CAGE CLAMP®; 1.5 mm<sup>2</sup>; Pin spacing 3.5 mm; 3-pole; Gripping plate; direct marking; 1,50 mm<sup>2</sup>; light gray



**Item No.: 2091-1523/002-000**  
1-conductor male connector; Push-in CAGE CLAMP®; 1.5 mm<sup>2</sup>; Pin spacing 3.5 mm; 3-pole; Integrated release lever; 1,50 mm<sup>2</sup>; light gray



**Item No.: 2091-1523/002-3000**  
1-conductor male connector; Push-in CAGE CLAMP®; 1.5 mm<sup>2</sup>; Pin spacing 3.5 mm; 3-pole; Integrated release lever; direct marking; 1,50 mm<sup>2</sup>; light gray



**Item No.: 2091-1524/020-000**  
1-conductor male connector; Push-in CAGE CLAMP®; 1.5 mm<sup>2</sup>; Pin spacing 3.5 mm; 4-pole; DIN-35 rail/panel mounting; Snap-in mounting feet; Integrated release lever; 1,50 mm<sup>2</sup>; light gray



**Item No.: 2091-1423/205-000**  
THR male header; 1.0 mm Ø solder pin; angled; clamping collar; Pin spacing 3.5 mm; 3-pole; light gray



**Item No.: 2091-1423/200-000/997-406**  
THR male header; 1.0 mm Ø solder pin; angled; in tape-and-reel packaging; Pin spacing 3.5 mm; 3-pole; light gray



**Item No.: 2091-1423/200-000**  
THR male header; 1.0 mm Ø solder pin; angled; Pin spacing 3.5 mm; 3-pole; light gray



**Item No.: 2091-1403/205-000**  
THR male header; 1.0 mm Ø solder pin; straight; clamping collar; Pin spacing 3.5 mm; 3-pole; light gray



**Item No.: 2091-1403/200-000**  
THR male header; 1.0 mm Ø solder pin; straight; Pin spacing 3.5 mm; 3-pole; light gray



**Item No.: 2091-1723/200-000**  
THR pin strip; 1.0 mm Ø solder pin; angled; Pin spacing 3.5 mm; 3-pole; black



**Item No.: 2091-1703/200-000**  
THR pin strip; 1.0 mm Ø solder pin; straight; Pin spacing 3.5 mm; 3-pole; black



**Item No.: 2091-1423/005-000**  
THT male header; 1.0 mm Ø solder pin; angled; clamping collar; Pin spacing 3.5 mm; 3-pole; light gray



**Item No.: 2091-1423**  
THT male header; 1.0 mm Ø solder pin; angled; Pin spacing 3.5 mm; 3-pole; light gray



**Item No.: 2091-1403/005-000**  
THT male header; 1.0 mm Ø solder pin; straight; clamping collar; Pin spacing 3.5 mm; 3-pole; light gray



**Item No.: 2091-1403**  
THT male header; 1.0 mm Ø solder pin; straight; Pin spacing 3.5 mm; 3-pole; light gray



**Item No.: 2091-1723**  
THT pin strip; 1.0 mm Ø solder pin; angled; Pin spacing 3.5 mm; 3-pole; black



**Item No.: 2091-1703**  
THT pin strip; 1.0 mm Ø solder pin; straight; Pin spacing 3.5 mm; 3-pole; black

## 1.2 Optional Accessories

### 1.2.1 Coding

#### 1.2.1.1 Coding



**Item No.: 2091-1610**

Coding key carrier; suitable for 3.5 mm pin spacing; orange

### 1.2.2 Strain relief

#### 1.2.2.1 Strain relief plate



**Item No.: 2091-1601/002-000**

Gripping plate with sliding connector release; for female and male connectors; 2 parts; Pin spacing 3.5 mm; 3- to 4-pole; light gray



**Item No.: 2091-1601**

Gripping plate; for female and male connectors; 1 part; Pin spacing 3.5 mm; 3- to 4-pole; light gray

### 1.2.3 Test and measurement

#### 1.2.3.1 Testing accessories



**Item No.: 735-500**

WAGO Test pin; 1 mm Ø; 30 V AC / 60 V DC; CAT0; 1 A; 6 mm uninsulated; Test lead for soldering up to 0,5mm<sup>2</sup>

### 1.2.4 Tool

#### 1.2.4.1 Operating tool



**Item No.: 210-719**

Operating tool; Blade: 2.5 x 0.4 mm; with a partially insulated shaft

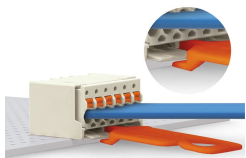


**Item No.: 2092-1630**

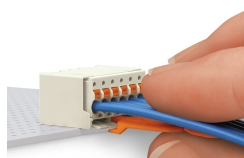
Unlocking tool; orange

## Installation Notes

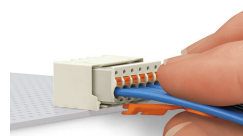
### Locking system



Disconnecting a female connector via unlocking tool. Plug unlocking tool into the male header's locking latch.

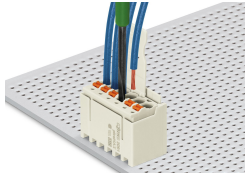


Insert unlocking tool until it hits the backstop. Wedge opens locking latches.



Pull on both unlocking tool and conductors to remove female connector from male header.

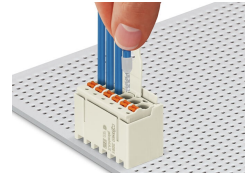
## Conductor termination



Inserting fine-stranded conductor into mated female connector via push-button.



Inserting a fine-stranded conductor into an unmated female connector via push-button.



Inserting solid and ferruled conductors via push-in termination.

## Marking



Pole marking via factory direct marking.

## Coding



Coding a female connector (via coding key carrier and two keys for female connector, see symbol).

## Testing



Testing via 1 mm Ø test pin – touch contact.