

PLEASE CHECK WWW.MOLEX.COM FOR LATEST PART INFORMATION

Part Number: [2078430005](#)
Status: **Active**
Overview: [L1NK Connector System](#)
Description: L1NK 250 Header, Vertical, Fully Shrouded, Tin (Sn) Plating, 5 Circuits, with Peg

Documents:

3D Model	Product Specification 2079020001-PS-SK-000 (PDF)
3D Model (PDF)	Application Specification 2079020001-AS-000 (PDF)
Drawing (PDF)	Packaging Specification 2078430000-PK-000 (PDF)
Product Specification 2079020001-PS-000 (PDF)	Test Summary 2079020000-TS-000 (PDF)
Product Specification 2079020001-PS-CH-000 (PDF)	Datasheet (PDF)
Product Specification 2079020001-PS-ES-000 (PDF)	RoHS Certificate of Compliance (PDF)
Product Specification 2079020001-PS-JP-000 (PDF)	

Agency Certification

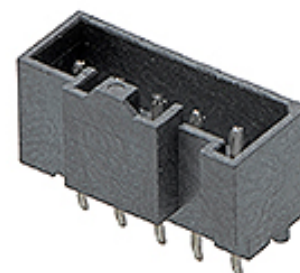
CSA 152514

General

Product Family	PCB Headers
Series	207843
Application	Power, Wire-to-Board
Footprint Viewer	Yes
Overview	L1NK Connector System
Product Name	L1NK 250
UPC	191130123155

Physical

Breakaway	No
Circuits (Loaded)	5
Circuits (maximum)	5
Color - Resin	Black
Durability (mating cycles max)	25
First Mate / Last Break	No
Flammability	94V-0
Glow-Wire Capable	Yes
Guide to Mating Part	No
Keying to Mating Part	None
Lock to Mating Part	Yes
Material - Metal	Brass
Material - Plating Mating	Tin
Material - Plating Termination	Tin
Material - Resin	Liquid Crystal Polymer
Net Weight	0.509/g
Number of Rows	1
Orientation	Vertical
PC Tail Length	3.45mm
PCB Locator	No
PCB Retention	None
PCB Thickness - Recommended	1.60mm
Packaging Type	Bag
Pitch - Mating Interface	2.50mm
Pitch - Termination Interface	2.50mm
Polarized to Mating Part	Yes
Polarized to PCB	Yes
Shrouded	Fully
Stackable	No
Surface Mount Compatible (SMC)	No



Series image - Reference only

EU ELV

Not Relevant

EU RoHS

Compliant

REACH SVHC

Not Contained Per -
D(2020)4578-DC (25
June 2020)

Halogen-Free

Status

Low-Halogen

For more information, please visit [Contact US](#)

China ROHS

ELV

RoHS Phthalates

China RoHS

Green Image

Not Relevant

Not Contained

Search Parts in this Series

[207843 Series](#)

Mates With

L1NK 250 Receptacle Housing [207841](#)

Temperature Range - Operating
Termination Interface: Style

-40° to +105°C
Through Hole

Electrical

Current - Maximum per Contact
Voltage - Maximum

6.5A
250V AC (RMS)/DC

Material Info

Reference - Drawing Numbers

Application Specification
Packaging Specification
Product Specification

2079020001-AS-000
2078430000-PK-000
2079020001-PS-000, 2079020001-PS-CH-000,
2079020001-PS-ES-000, 2079020001-PS-JP-000,
2079020001-PS-SK-000
2078430004-SD-000
2079020000-TS-000

Sales Drawing
Test Summary

This document was generated on 09/11/2020

PLEASE CHECK WWW.MOLEX.COM FOR LATEST PART INFORMATION