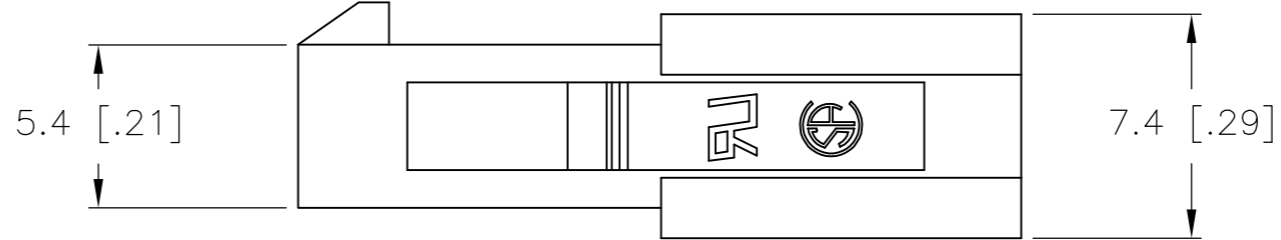
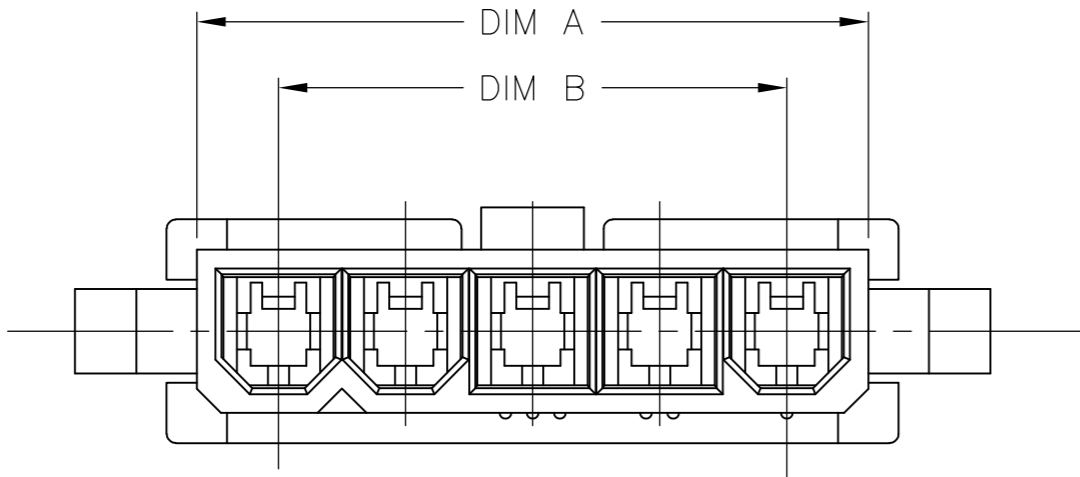
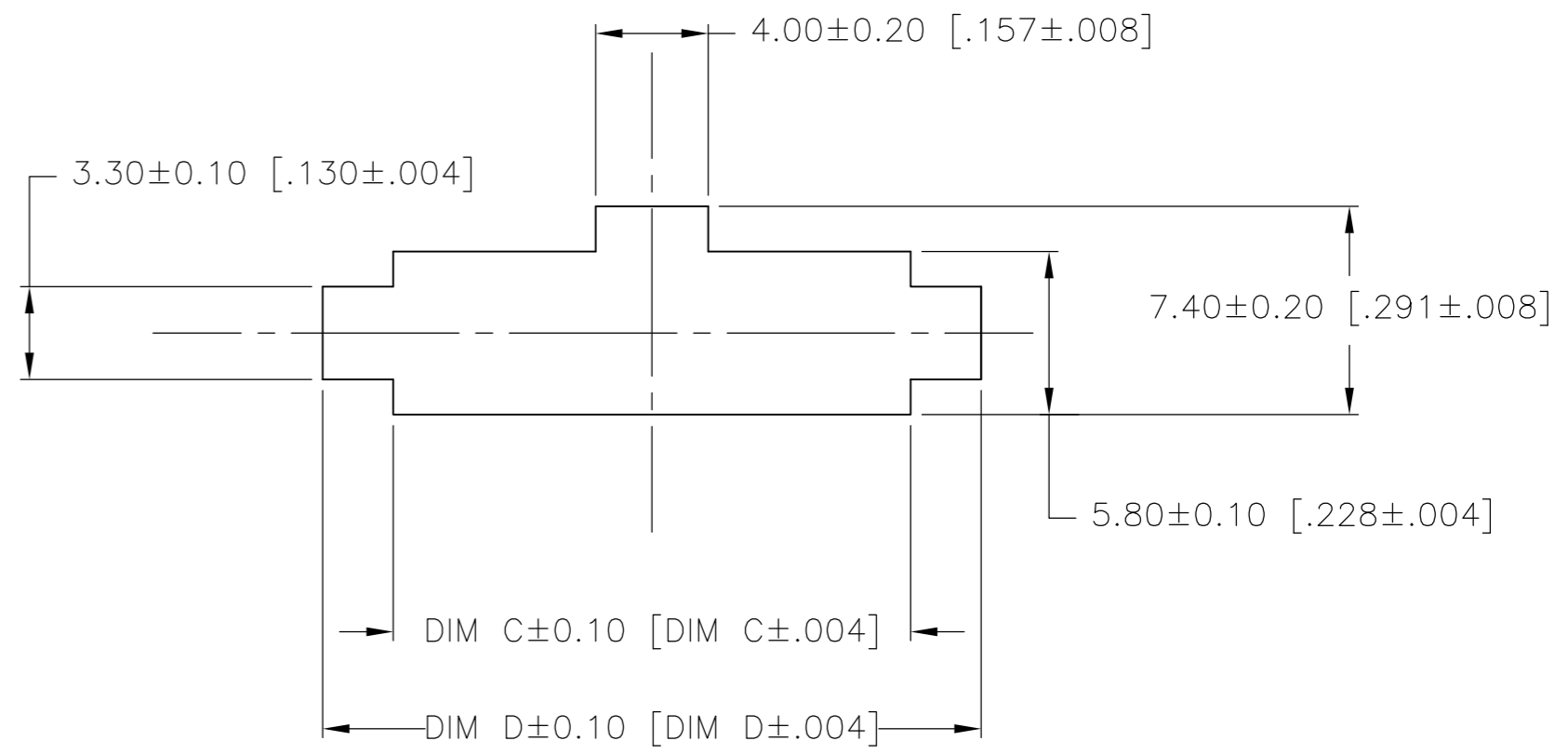
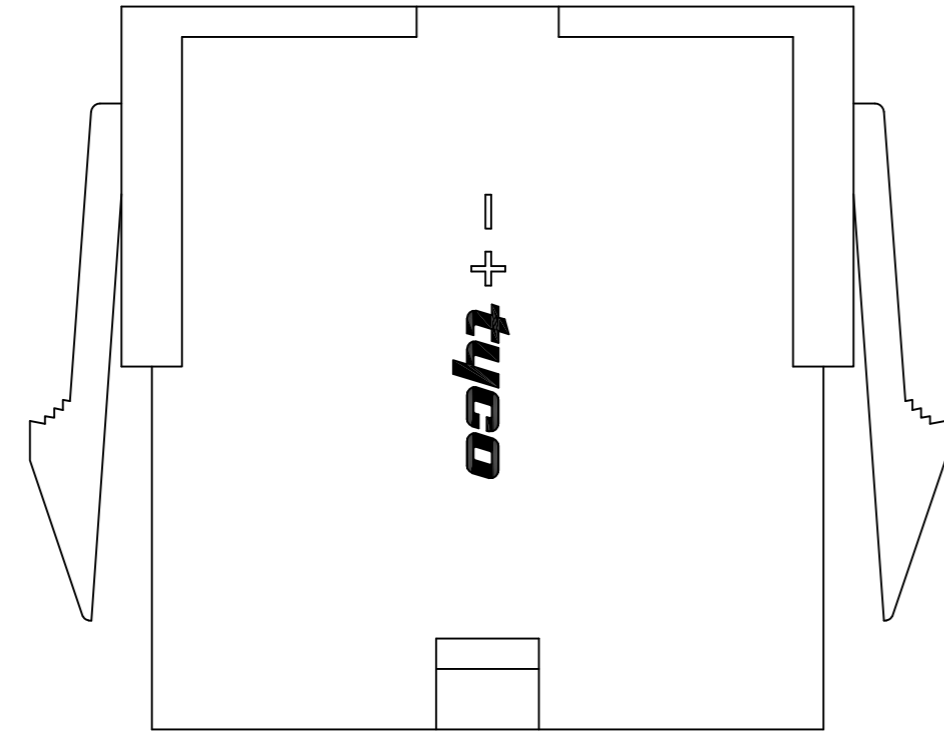
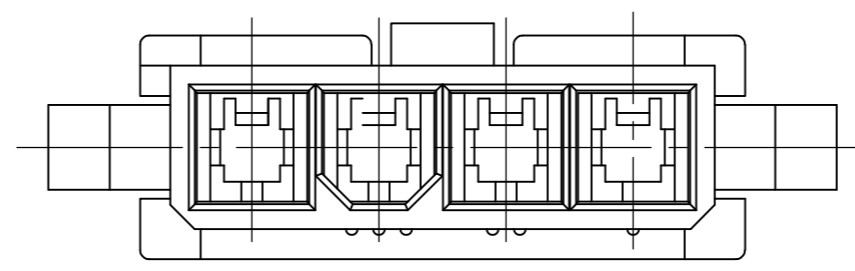
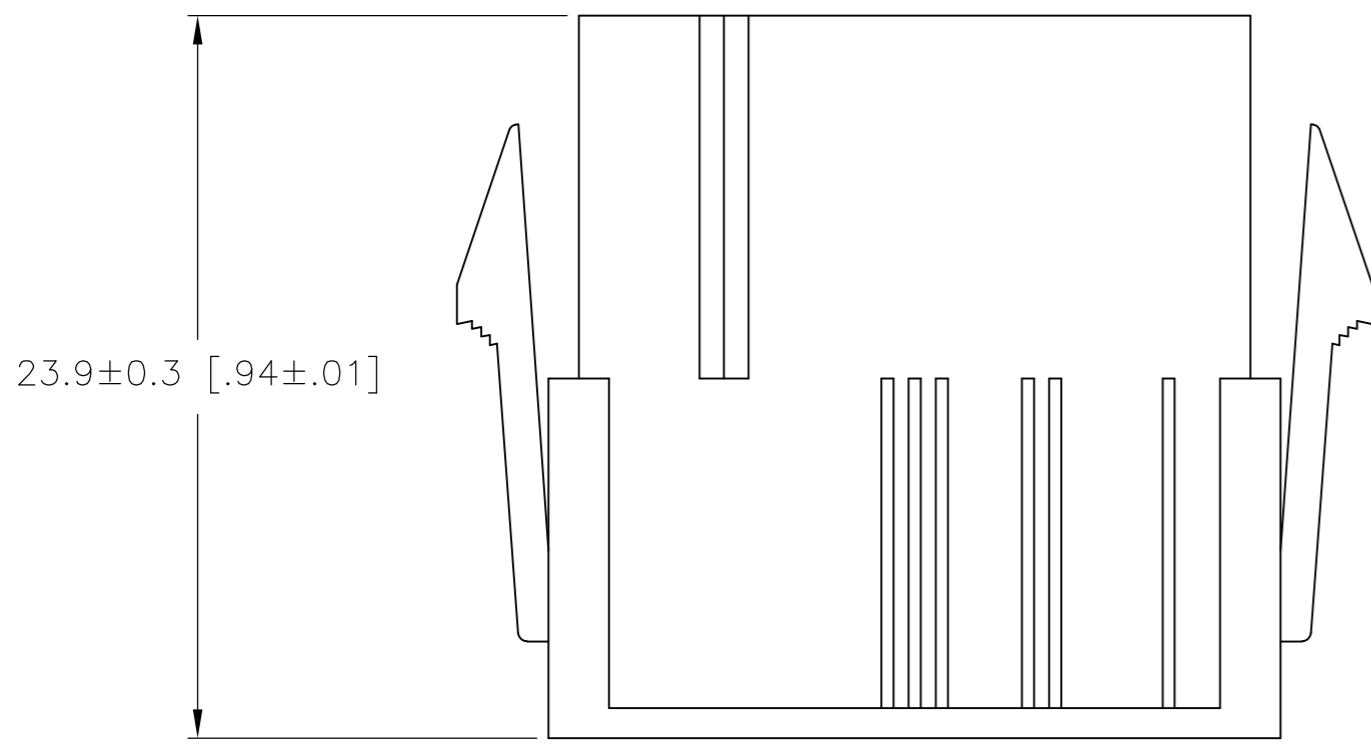


THIS DRAWING IS UNPUBLISHED. RELEASED FOR PUBLICATION  
 © COPYRIGHT BY TYCO ELECTRONICS CORPORATION. ALL RIGHTS RESERVED.

LOC		DIST		REVISIONS			
P	LTR	DESCRIPTION		DATE	DWN	APVD	
CM	00	A	WR-08-66	03DEC2008	KW	CC	



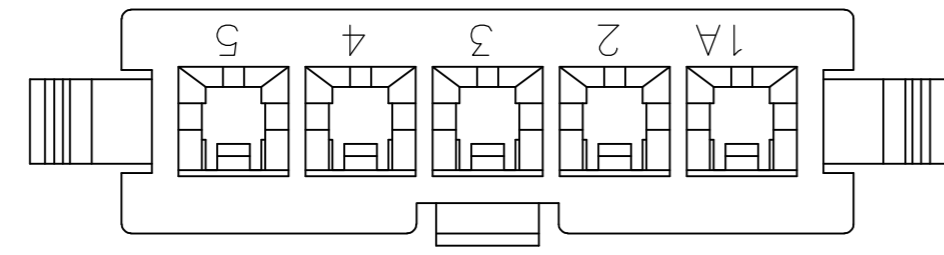
RECOMMENDED CUT-OUT FOR 2.00 [.079] MAX THICK PANEL



4 POSITION MATING FACE  
(FOR POLARIZATION IDENTIFICATION)

- 1 MATERIAL: NYLON 66 UL94V-0, BLACK.
- 2 PANEL SHOULD BE PUNCHED IN THE DIRECTION OF CONNECTOR INSERTION.

27.6 [1.09]	22.6 [.89]	16.8 [.66]	22.2 [.87]	5	2029204-5
23.4 [.92]	18.4 [.72]	12.6 [.50]	18.0 [.71]	4	2029204-4
DIM D	DIM C	DIM B	DIM A	POS	PART NUMBER



**METRIC**

THIS DRAWING IS A CONTROLLED DOCUMENT.

DIMENSIONS: mm [INCHES]	TOLERANCES UNLESS OTHERWISE SPECIFIED: 0 PLC ± 1 PLC ± 0.1 [.04] 2 PLC ± 3 PLC ± 4 PLC ± ANGLES ± FINISH	DWN K. WHITAKER 03DEC2008 CHK C. CASH 03DEC2008 APVD C. CASH 03DEC2008 PRODUCT SPEC	Tyco Electronics Corporation Harrisburg, PA 17105-3608
MATERIAL 1	APPLICATION SPEC	NAME PLUG HOUSING, PANEL MOUNT, 94V-0, SINGLE ROW, BLACK, VAL-U-LOK(TM)	RESTRICTED TO
CUSTOMER DRAWING		WEIGHT	SCALE 5:1 SHEET 1 OF 1 REV A