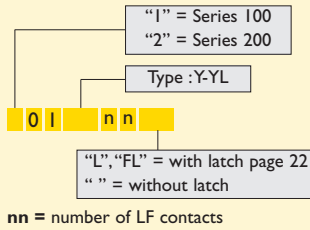


CMM 100 / 200 male

STRAIGHT PCB

Part numbering :

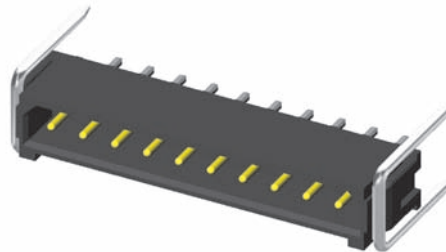
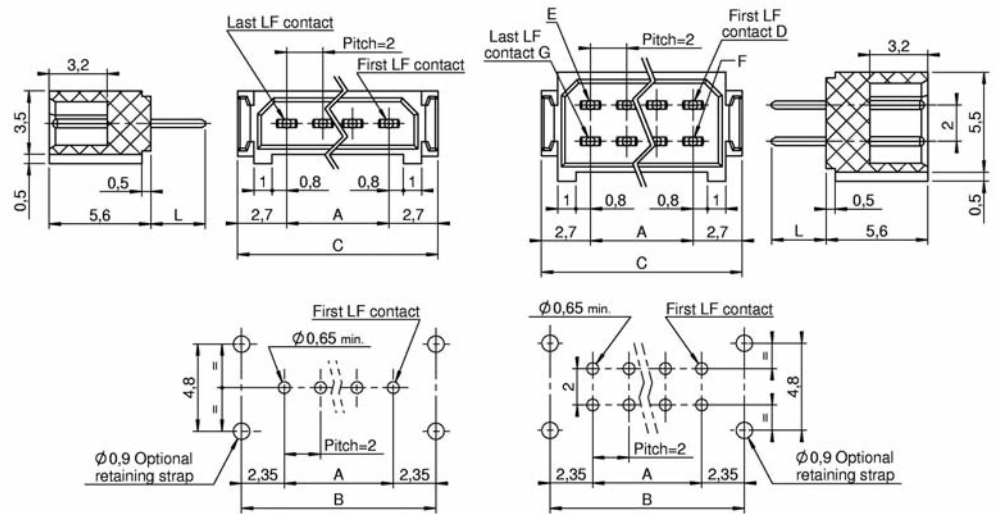


Type	L
Y	3
YL	4,5

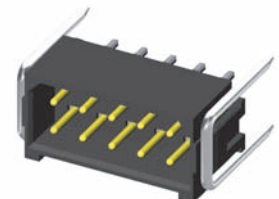
Calculation :

CMM 100	CMM 200
$A = (nn \times 2) - 2$	$A = nn - 2$
$B = A + 4,7$	$B = A + 4,7$
$C = A + 5,4$	$C = A + 5,4$

Refer to dimension table on cover page



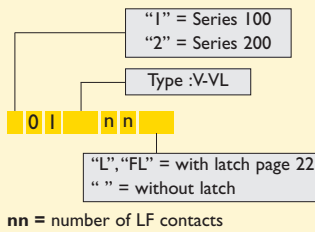
nn min = 02 nn max = 25



nn min = 04 nn max = 50

90° PCB

Part numbering :

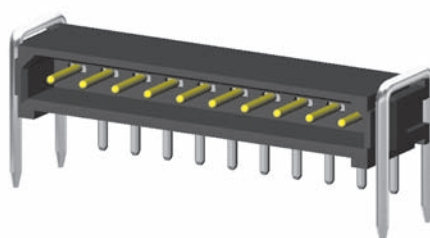
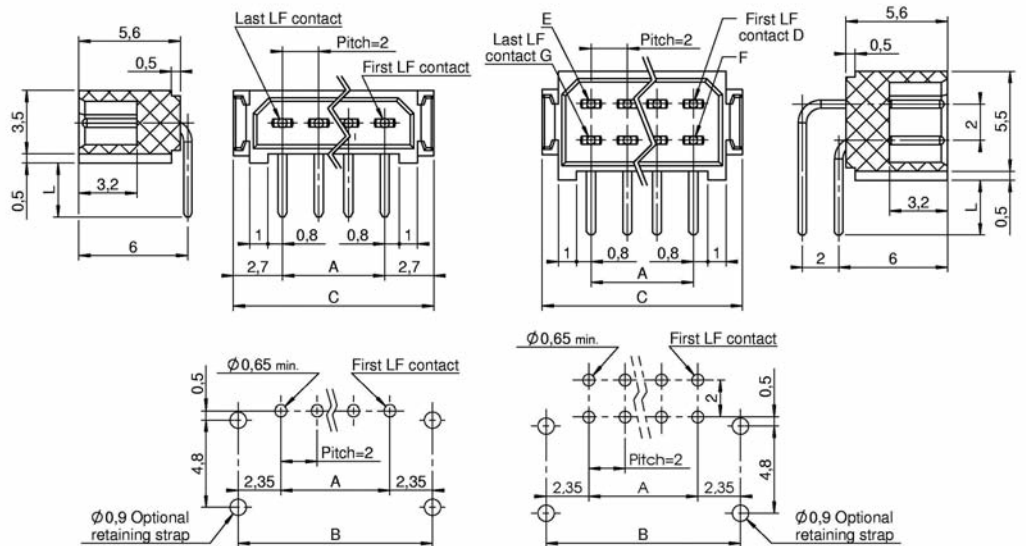


Type	L
V	3
VL	4,5

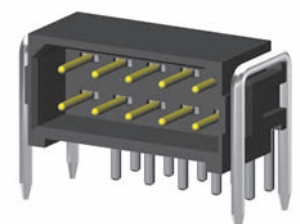
Calculation :

CMM 100	CMM 200
$A = (nn \times 2) - 2$	$A = nn - 2$
$B = A + 4,7$	$B = A + 4,7$
$C = A + 5,4$	$C = A + 5,4$

Refer to dimension table on cover page



nn min = 02 nn max = 25



nn min = 04 nn max = 50