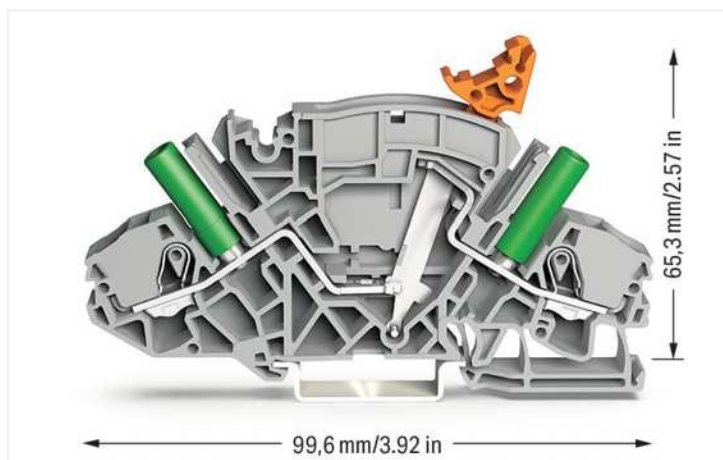


Data Sheet | Item Number: 2007-8821/044-000

2-conductor disconnect/test terminal block; e.g., current transformer circuits; with receptacle for adjacent jumper with switch lever; for 4 mm Ø test plugs; for DIN-rail 35 x 15 and 35 x 7.5; 6 mm²; Push-in CAGE CLAMP®; 6,00 mm²; gray



<https://www.wago.com/2007-8821/044-000>



Color: ■ gray

Electrical data

Ratings per IEC/EN

Nominal voltage (III/3)	500 V
Rated impulse voltage (III/3)	6 kV
Rated current	30 A
Legend (ratings)	(III / 3) Δ Overvoltage category III / Pollution degree 3

Approvals per

UL 1059

Use group	B	C	D
Rated voltage	300 V	300 V	300 V
Rated current	30 A	30 A	10 A

Approvals per

CSA 22.2 No 158

Use group	B	C	D
Rated voltage	300 V	300 V	300 V
Rated current	30 A	30 A	10 A

Power Loss

Power loss, per pole (potential)	0.702 W
Rated current I_N for specified power loss	30 A
Resistance value for specified, current-dependent power loss	0.00078 Ω

Connection data

Connection points	2
Total number of potentials	2
Number of levels	1
Number of jumper slots	2

Connection 1

Connection technology	Push-in CAGE CLAMP®
Actuation type	Operating tool
Connectable conductor materials	Copper
Nominal cross-section	6 mm ² / 10 AWG
Solid conductor	0.5 ... 10 mm ² / 20 ... 8 AWG
Solid conductor; push-in termination	1 ... 10 mm ² / 14 ... 8 AWG
Fine-stranded conductor	0.5 ... 10 mm ² / 20 ... 8 AWG
Fine-stranded conductor; with insulated ferrule	0.5 ... 6 mm ² / 20 ... 10 AWG
Fine-stranded conductor; with uninsulated ferrule	1.5 ... 6 mm ² / 16 ... 10 AWG
Fine-stranded conductor; with ferrule; push-in termination	2.5 ... 6 mm ² / 16 ... 10 AWG
Strip length	13 ... 15 mm / 0.51 ... 0.59 inches
Wiring direction	Front-entry wiring

Physical data

Width	8 mm / 0.315 inches
Height	99.6 mm / 3.921 inches
Depth from upper-edge of DIN-rail	65.3 mm / 2.571 inches

Mechanical data

Mounting type	DIN-35 rail
Marking level	Center/side marking

Material data

Note (material data)	Information on material specifications can be found here
Color	gray
Material group	I
Insulation material	Polyamide (PA66)
Flammability class per UL94	V0
Fire load	0.42 MJ
Weight	27.8 g
Test socket color	green

Environmental requirements

Processing temperature	-35 ... +85 °C
Continuous operating temperature	-60 ... +105 °C

Commercial data

eCl@ss 10.0	27-14-11-26
eCl@ss 9.0	27-14-11-26
ETIM 8.0	EC000902
ETIM 7.0	EC000902
PU (SPU)	20 pcs
Packaging type	Box
Country of origin	CN
GTIN	4055143300247
Customs tariff number	85365080900

Environmental Product Compliance

RoHS Compliance Status	Compliant, No Exemption
------------------------	-------------------------

Approvals / Certificates

General approvals



General approvals

UL	UL 1059	E45172
UL International Germany GmbH		

Approval	Standard	Certificate Name
CCA DEKRA Certification B.V.	EN 60947	71-122099
CCA DEKRA Certification B.V.	EN 60947	NTR NL-7911
CSA DEKRA Certification B.V.	C22.2 No. 158	70009679

Declarations of conformity and manufacturer's declarations



Approval	Standard	Certificate Name
EU-Declaration of Conformity WAGO GmbH & Co. KG	-	-
Railway WAGO GmbH & Co. KG	-	Railway Ready
UK-Declaration of Conformity WAGO GmbH & Co. KG	-	-

Approvals for marine applications



Approval	Standard	Certificate Name
DNV GL Det Norske Veritas, Germanischer Lloyd	-	TAE00001V2

Downloads

Environmental Product Compliance

Compliance Search
Environmental Product Compliance 2007-8821/044-000



Documentation

Additional Information
Technical Section

pdf
2142.18 KB



CAD/CAE-Data

CAD data
2D/3D Models 2007-8821/044-000



CAE data
EPLAN Data Portal 2007-8821/044-000
WSCAD Universe 2007-8821/044-000
ZUKEN Portal 2007-8821/044-000



1 Compatible Products

1.1 Required Accessories

1.1.1 End plate

1.1.1.1 End plate



Item No.: 2007-8893

End plate; 1.5 mm thick; with lock-out seal option; gray



Item No.: 2007-8894

End plate; 1.5 mm thick; with lock-out seal option; orange



Item No.: 2007-8891

End plate; 1.5 mm thick; without lock-out seal option; gray



Item No.: 2007-8892

End plate; 1.5 mm thick; without lock-out seal option; orange

1.2 Optional Accessories

1.2.1 DIN-rail

1.2.1.1 Mounting accessories



Item No.: 210-196

Aluminum carrier rail; 35 x 8.2 mm; 1.6 mm thick; 2 m long; unslotted; similar to EN 60715; silver-colored



Item No.: 210-198

Copper carrier rail; 35 x 15 mm; 2.3 mm thick; 2 m long; unslotted; according to EN 60715; copper-colored



Item No.: 210-197

Steel carrier rail; 35 x 15 mm; 1.5 mm thick; 2 m long; slotted; similar to EN 60715; silver-colored



Item No.: 210-114

Steel carrier rail; 35 x 15 mm; 1.5 mm thick; 2 m long; unslotted; similar to EN 60715; silver-colored



Item No.: 210-118

Steel carrier rail; 35 x 15 mm; 2.3 mm thick; 2 m long; unslotted; according to EN 60715; silver-colored



Item No.: 210-115

Steel carrier rail; 35 x 7.5 mm; 1 mm thick; 2 m long; slotted; according to EN 60715; "Hole width 18 mm; silver-colored



Item No.: 210-112

Steel carrier rail; 35 x 7.5 mm; 1 mm thick; 2 m long; slotted; according to EN 60715; "Hole width 25 mm; silver-colored



Item No.: 210-113

Steel carrier rail; 35 x 7.5 mm; 1 mm thick; 2 m long; unslotted; according to EN 60715; silver-colored

1.2.2 Ferrule

1.2.2.1 Ferrule



Item No.: 216-262

Ferrule; Sleeve for 0.75 mm² / 18 AWG; insulated; electro-tin plated; electrolytic copper; gastight crimped; acc. to DIN 46228, Part 4/09.90; gray



Item No.: 216-263

Ferrule; Sleeve for 1 mm² / AWG 18; insulated; electro-tin plated; electrolytic copper; gastight crimped; acc. to DIN 46228, Part 4/09.90; red



Item No.: 216-264

Ferrule; Sleeve for 1.5 mm² / AWG 16; insulated; electro-tin plated; electrolytic copper; gastight crimped; acc. to DIN 46228, Part 4/09.90; black



Item No.: 216-266

Ferrule; Sleeve for 2.5 mm² / AWG 14; insulated; electro-tin plated; electrolytic copper; gastight crimped; acc. to DIN 46228, Part 4/09.90; blue



Item No.: 216-267

Ferrule; Sleeve for 4 mm² / AWG 12; insulated; electro-tin plated; electrolytic copper; gastight crimped; acc. to DIN 46228, Part 4/09.90; gray



Item No.: 216-208

Ferrule; Sleeve for 6 mm² / AWG 10; insulated; electro-tin plated; electrolytic copper; gastight crimped; acc. to DIN 46228, Part 4/09.90; yellow

1.2.3 Installation

1.2.3.1 Cover

Item No.: 709-156

Cover; Type 3; suitable for cover carrier, type 3; 1 m long; transparent

1.2.3.2 Cover carrier



Item No.: 709-169
Cover carrier; Type 3; gray

1.2.4 Jumper

1.2.4.1 Jumper



Item No.: 2007-8442
Adjacent jumper for switching lever; 2-way; insulated; orange



Item No.: 2007-8443
Adjacent jumper for switching lever; 3-way; insulated; orange



Item No.: 2007-8444
Adjacent jumper for switching lever; 4-way; insulated; orange



Item No.: 2007-8445
Adjacent jumper for switching lever; 5-way; insulated; orange



Item No.: 2007-8447
Adjacent jumper for switching lever; 7-way; insulated; orange



Item No.: 2007-8448
Adjacent jumper for switching lever; 8-way; insulated; orange



Item No.: 282-440
Jumper; 10-way; insulated; orange



Item No.: 282-432
Jumper; 2-way; insulated; orange



Item No.: 282-432/100-000
Jumper; 2-way; insulated; orange



Item No.: 282-433
Jumper; 3-way; insulated; orange



Item No.: 282-433/100-000
Jumper; 3-way; insulated; orange



Item No.: 282-434
Jumper; 4-way; insulated; orange



Item No.: 282-434/100-000
Jumper; 4-way; insulated; orange



Item No.: 282-435
Jumper; 5-way; insulated; orange



Item No.: 282-436
Jumper; 6-way; insulated; orange



Item No.: 282-437
Jumper; 7-way; insulated; orange



Item No.: 282-438
Jumper; 8-way; insulated; orange



Item No.: 282-439
Jumper; 9-way; insulated; orange



Item No.: 282-435/011-000
Jumper; insulated; orange



Item No.: 282-435/300-000
Jumper; insulated; orange



Item No.: 282-435/301-000
Jumper; insulated; orange



Item No.: 282-436/301-000
Jumper; insulated; orange



Item No.: 282-436/304-000
Jumper; insulated; orange



Item No.: 282-437/011-000
Jumper; insulated; orange



Item No.: 282-437/012-000
Jumper; insulated; orange



Item No.: 282-438/300-000
Jumper; insulated; orange



Item No.: 282-438/301-000
Jumper; insulated; orange



Item No.: 282-439/011-000
Jumper; insulated; orange



Item No.: 2007-8446
Short circuit jumper; 6-way; insulated; orange

1.2.5 Locking system

1.2.5.1 Locking system



Item No.: 210-254
Interlocking link; mechanically locks multiple links; 1 m long; transparent



Item No.: 282-881
Locking cover; mechanically locks multiple links; 1-pole; transparent



Item No.: 282-882
Locking cover; mechanically locks multiple links; 2-pole; transparent



Item No.: 282-883
Locking cover; mechanically locks multiple links; 3-pole; transparent



Item No.: 282-884
Locking cover; mechanically locks multiple links; 4-pole; transparent



Item No.: 282-885
Locking cover; mechanically locks multiple links; 5-pole; transparent



Item No.: 282-886
Locking cover; mechanically locks multiple links; 6-pole; transparent



Item No.: 282-887
Locking cover; mechanically locks multiple links; 7-pole; transparent

1.2.5.1 Locking system



Item No.: 282-888
 Locking cover; mechanically locks multiple links; 8-pole; transparent

1.2.6 Lock-out

1.2.6.1 Locking system



Item No.: 2007-8899
 Lock-out; for disconnect link; yellow

1.2.7 Marking

1.2.7.1 Marker



Item No.: 793-501/000-006
 WMB marking card; as card; not stretchable; plain; snap-on type; blue



Item No.: 793-501/000-007
 WMB marking card; as card; not stretchable; plain; snap-on type; gray



Item No.: 793-501/000-023
 WMB marking card; as card; not stretchable; plain; snap-on type; green



Item No.: 793-501/000-017
 WMB marking card; as card; not stretchable; plain; snap-on type; light green



Item No.: 793-501/000-012
 WMB marking card; as card; not stretchable; plain; snap-on type; orange



Item No.: 793-501/000-005
 WMB marking card; as card; not stretchable; plain; snap-on type; red



Item No.: 793-501/000-024
 WMB marking card; as card; not stretchable; plain; snap-on type; violet

Item No.: 793-501
 WMB marking card; as card; not stretchable; plain; snap-on type; white



Item No.: 793-501/000-002
 WMB marking card; as card; not stretchable; plain; snap-on type; yellow



Item No.: 2009-115/000-006
 WMB-Inline; for Smart Printer; 1500 pieces on roll; stretchable 5 - 5.2 mm; plain; snap-on type; blue



Item No.: 2009-115/000-007
 WMB-Inline; for Smart Printer; 1500 pieces on roll; stretchable 5 - 5.2 mm; plain; snap-on type; gray



Item No.: 2009-115/000-023
 WMB-Inline; for Smart Printer; 1500 pieces on roll; stretchable 5 - 5.2 mm; plain; snap-on type; green



Item No.: 2009-115/000-017
 WMB-Inline; for Smart Printer; 1500 pieces on roll; stretchable 5 - 5.2 mm; plain; snap-on type; light green



Item No.: 2009-115/000-012
 WMB-Inline; for Smart Printer; 1500 pieces on roll; stretchable 5 - 5.2 mm; plain; snap-on type; orange



Item No.: 2009-115/000-024
 WMB-Inline; for Smart Printer; 1500 pieces on roll; stretchable 5 - 5.2 mm; plain; snap-on type; violet



Item No.: 2009-115
 WMB-Inline; for Smart Printer; 1500 pieces on roll; stretchable 5 - 5.2 mm; plain; snap-on type; white



Item No.: 2009-115/000-002
 WMB-Inline; for Smart Printer; 1500 pieces on roll; stretchable 5 - 5.2 mm; plain; snap-on type; yellow

1.2.7.2 Marker carrier



Item No.: 2009-198
 Adaptor; gray

1.2.7.3 Marking strip



Item No.: 2009-110

Marking strips; for Smart Printer; on reel; not stretchable; plain; snap-on type; white

1.2.8 Protective warning marker

1.2.8.1 Cover



Item No.: 2006-115

Protective warning marker; for 5 terminal blocks; with high-voltage symbol, black; yellow

1.2.9 Tool

1.2.9.1 Operating tool



Item No.: 210-721

Operating tool; Blade: 5.5 x 0.8 mm; with a partially insulated shaft; multicoloured

Installation Notes

Commoning



Additional commoning option on the transformer side



Preparing shorting path for the current transformer circuits.



Insert insulated, touch-proof circuit jumpers into jumper slot.



Insert insulated, touch-proof circuit jumpers into jumper slot.



Lock-out prevents accidental operation of disconnect link.



Lock-out snaps into one of two notched positions.

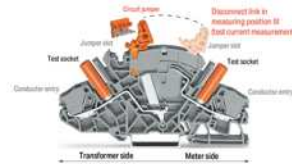
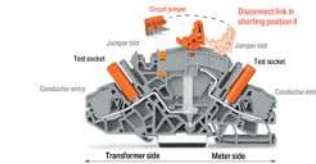
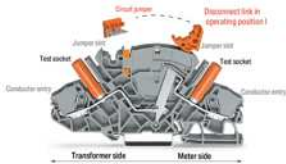
Locking system



Using locking covers or profiles for adjacent terminal blocks allows disconnect links to be operated simultaneously.

A lock-out seal can be used on the disconnect link in operating position I when combined with an end and separator plate (2007-8893 or 2007-8894).

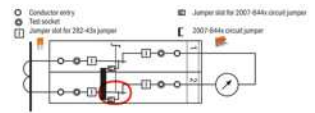
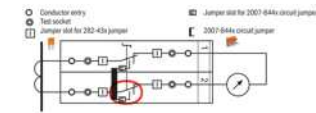
Interlocking link mechanically locks multiple links for multi-pole switching applications.



Disconnect/Test Terminal Block (2007-8821)

Disconnect/Test Terminal Block (2007-8821)

Disconnect/Test Terminal Block (2007-8821)

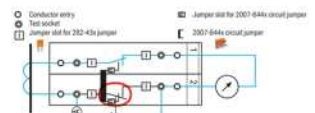
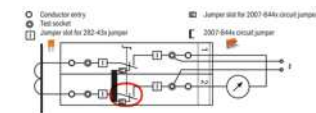


Disconnect link in operating position I
Terminal blocks required:
2 x disconnect/test terminal block (2007-8821)
1 x circuit jumper, orange (2007-8442)
Locking covers or interlocking links (option)

In the operating position, the measurement device is connected to the transformer, the circuit jumper is inserted and the disconnect link is in position I.

Disconnect link in shorting position II

The transformer is not disconnected from the measuring device yet, the shorting path is activated by moving the disconnect link into shorting position II and the transformer is safely shorted.



Test current measurement: Disconnect link in measuring position III

The measuring device is electrically disconnected from the transformer. If required, an external voltage can be applied to the measuring device via the test socket.

Measurement testing (using both test sockets)
Terminal block 1: Disconnect link in operating position I
Terminal block 2: Disconnect link in measuring position III

Measurement testing: First insert the reference current meter (A) into the test socket, then move the disconnect link into measurement point III (test current measurement).

Marking



Marking via WMB Multi markers or marking strips.