

Data Sheet | Item Number: 2006-499

Step-down jumper; from 2006/2004 to 2004/2002/2001 series; from 2206/2204 to 2204/2202/2201 series; insulated; light gray

<https://www.wago.com/2006-499>



Color: ■ light gray

Electrical data

Ratings per IEC/EN

Rated current	32 A
---------------	------

Material data

Note (material data)

[Information on material specifications can be found here](#)

Color	light gray
-------	------------

Material group	I
----------------	---

Insulation material	Polyamide (PA66)
---------------------	------------------

Flammability class per UL94	V0
-----------------------------	----

Fire load	0.008 MJ
-----------	----------

Weight	1.6 g
--------	-------

Commercial data

Product Group	22 (TOPJOB S)
---------------	---------------

eCl@ss 10.0	27-14-11-40
-------------	-------------

eCl@ss 9.0	27-14-11-40
------------	-------------

ETIM 8.0	EC000489
----------	----------

ETIM 7.0	EC000489
----------	----------

PU (SPU)	25 pcs
----------	--------

Packaging type	Bag
----------------	-----

Country of origin	DE
-------------------	----

GTIN	4055143701808
------	---------------

Customs tariff number	85366990990
-----------------------	-------------

Environmental Product Compliance	
RoHS Compliance Status	Compliant, No Exemption

Approvals / Certificates

Declarations of conformity and manufacturer's declarations



Approval	Standard	Certificate Name
Railway WAGO GmbH & Co. KG	-	Railway Ready

Downloads

Environmental Product Compliance

Compliance Search	
Environmental Product Compliance 2006-499	↓

Documentation

Additional Information		
Technical Section	pdf 2240.62 KB	↓

Bid Text				
2006-499	19.02.2019	xml 2.55 KB	↓	
2006-499	28.04.2017	doc 23.50 KB	↓	

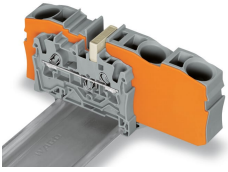
CAD/CAE-Data

CAD data	
2D/3D Models 2006-499	↓

CAE data	
EPLAN Data Portal 2006-499	↓
WSCAD Universe 2006-499	↓
ZUKEN Portal 2006-499	↓

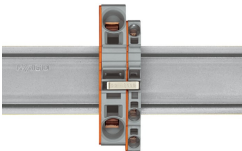
Installation Notes

Commoning



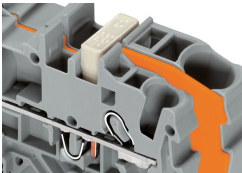
Step-down jumpers common terminal blocks of different sizes, without losing a conductor clamping point. This can be beneficial on long conductor runs where voltage drop can be a problem. A large conductor can be easily connected to smaller conductors at the distribution point. Commoning may be made in either direction using the special thin end plate to cover the open side. Additional through terminal blocks having a smaller cross-section may be commoned using push-in type jumper bars.

Commoning



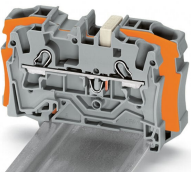
Using step-down jumpers, an end plate must be inserted between the terminal blocks to be commoned.

Commoning



Commoning with step-down jumpers.

Commoning



Step-down jumper (2006-499) commons 6/4 mm² (10/12 AWG) terminal blocks (2006/2004 Series) with 4/2.5/1.5 mm² (AWG 12/14/16) terminal blocks (2004/2002/2001 Series).

Commoning



Step-down jumper (2006-499) commons
6/4 mm² (10/12 AWG) terminal blocks
(2206/2204 Series) with 4/2.5/1.5 mm²
(AWG 12/14/16) terminal blocks
(2204/2202/2201 Series).