

**PLEASE CHECK WWW.MOLEX.COM FOR LATEST PART INFORMATION**

**Part Number:** [2005020272](#)  
**Status:** **Active**  
**Overview:** [stAK50h Connection System](#)  
**Description:** [stAK50h Right-Angle Hybrid Header, 27 Circuits, Key 2, Green, Tube](#)

**Documents:**

|   |   |
|---|---|
| <a href="#">3D Model</a>                                      | <a href="#">Application Specification 2005060000-AS-000 (PDF)</a> |
| <a href="#">Drawing (PDF)</a>                                 | <a href="#">Datasheet (PDF)</a>                                   |
| <a href="#">3D Model (PDF)</a>                                | <a href="#">RoHS Certificate of Compliance (PDF)</a>              |
| <a href="#">Product Specification 2005060001-PS-000 (PDF)</a> |   |

**General**

|                |   |
|----------------|---|
| Product Family | PCB Headers                               |
| Series         | <a href="#">200502</a>                    |
| Application    | Automotive, Power, Signal, Wire-to-Board  |
| Overview       | <a href="#">stAK50h Connection System</a> |
| Product Name   | stAK50h                                   |
| UPC            | 889056679701                              |

**Physical**

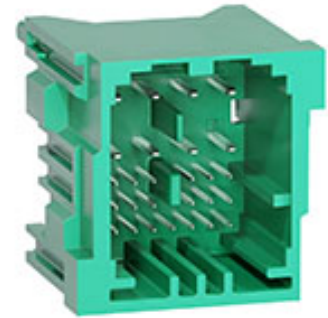
|                                |                |
|--------------------------------|----------------|
| Breakaway                      | No             |
| Circuits (Loaded)              | 27             |
| Circuits (maximum)             | 27             |
| Color - Resin                  | Green          |
| Durability (mating cycles max) | 10             |
| First Mate / Last Break        | No             |
| Glow-Wire Capable              | No             |
| Guide to Mating Part           | Yes            |
| Keying to Mating Part          | Yes            |
| Lock to Mating Part            | Yes            |
| Material - Metal               | Copper Alloy   |
| Material - Plating Mating      | Tin            |
| Material - Plating Termination | Tin            |
| Material - Resin               | SPS            |
| Net Weight                     | 10.644/g       |
| Number of Rows                 | 5              |
| Orientation                    | Right Angle    |
| PCB Locator                    | Yes            |
| PCB Retention                  | None           |
| PCB Thickness - Recommended    | 1.60mm         |
| Packaging Type                 | Tube           |
| Pitch - Mating Interface       | 2.00mm, 4.00mm |
| Pitch - Termination Interface  | 2.00mm, 4.00mm |
| Polarized to Mating Part       | Yes            |
| Polarized to PCB               | Yes            |
| Shrouded                       | Yes            |
| Stackable                      | Yes            |
| Surface Mount Compatible (SMC) | Yes            |
| Temperature Range - Operating  | -40° to +85°C  |
| Termination Interface: Style   | Through Hole   |

**Electrical**

|                               |             |
|-------------------------------|-------------|
| Current - Maximum per Contact | 12.0A, 5.0A |
| Voltage - Maximum             | 500V DC     |

**Material Info**

**Reference - Drawing Numbers**



*Series image - Reference only*

**EU ELV**

**Compliant**

**EU RoHS**

**Compliant**

**REACH SVHC**

Not Contained Per -  
D(2020)4578-DC (25  
June 2020)

**Halogen-Free**

**Status**

**Not Relevant**

For more information, please visit [Contact US](#)

China ROHS

ELV

RoHS Phthalates

**China RoHS**

Not Relevant

Compliant

Not Contained

**Search Parts in this Series**

[200502 Series](#)

**Mates With**

[stAK50h Hybrid Receptacle 1600290012](#)

Application Specification  
Product Specification  
Sales Drawing

2005060000-AS-000  
2005060001-PS-000  
2005021270SD-000

This document was generated on 10/27/2020

**PLEASE CHECK [WWW.MOLEX.COM](http://WWW.MOLEX.COM) FOR LATEST PART INFORMATION**