

PLEASE CHECK WWW.MOLEX.COM FOR LATEST PART INFORMATION

Part Number: [2002411234](#)
Status: **Active**
Overview: [Mega-Fit Power Connectors](#)
Description: Mega-Fit Right-Angle Header, Single Row, 5.70mm Pitch, 4 Circuits, 0.760µm Gold (Au) Plating, UL 94V-0, Glow-Wire Capable, Black

Documents:

3D Model	Application Specification 768232000-AS-000 (PDF)
Drawing (PDF)	Packaging Specification 2002412000-001 (PDF)
3D Model (PDF)	Datasheet (PDF)
Product Specification 1720631000-PS-000 (PDF)	RoHS Certificate of Compliance (PDF)

Agency Certification

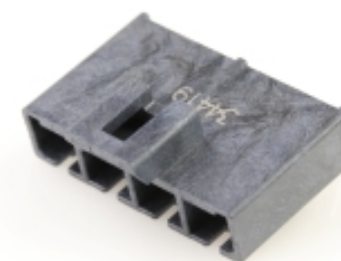
CSA	152514
UL	E29179

General

Product Family	PCB Headers
Series	200241
Application	Power, Wire-to-Board
Overview	Mega-Fit Power Connectors
Product Name	Mega-Fit
UPC	191128435703

Physical

Breakaway	No
Circuits (Loaded)	4
Circuits (maximum)	4
Color - Resin	Black
Durability (mating cycles max)	200
First Mate / Last Break	No
Flammability	94V-0
Glow-Wire Capable	Yes
Guide to Mating Part	No
Keying to Mating Part	None
Lock to Mating Part	Yes
Material - Metal	High Conductivity Copper
Material - Plating Mating	Gold
Material - Plating Termination	Matte Tin
Material - Resin	Liquid Crystal Polymer
Net Weight	2.900/g
Number of Rows	1
Orientation	Right Angle
PC Tail Length	3.60mm
PCB Locator	No
PCB Retention	Yes
PCB Thickness - Recommended	1.58mm, 2.36mm
Packaging Type	Tray
Pitch - Mating Interface	5.70mm
Pitch - Termination Interface	5.70mm
Plating min - Mating	0.760µm
Plating min - Termination	2.540µm
Polarized to Mating Part	Yes
Polarized to PCB	Yes
Temperature Range - Operating	-40° to +105°C, -40° to +120°C
Termination Interface: Style	Through Hole



Series image - Reference only

EU ELV

Not Relevant

EU RoHS

Compliant

REACH SVHC

Not Contained Per -
D(2020)4578-DC (25
June 2020)

Halogen-Free

Status

Low-Halogen

For more information, please visit [Contact US](#)

China ROHS

ELV

RoHS Phthalates

China RoHS

Green Image

Not Relevant

Not Contained

Search Parts in this Series

[200241](#) Series

Mates With

Mega-Fit Receptacle Housing [200456](#)

Electrical

Current - Maximum per Contact

23.5A

Voltage - Maximum

600V AC (RMS)/DC

Material Info**Reference - Drawing Numbers**

Application Specification

768232000-AS-000

Packaging Specification

2002412000-001

Product Specification

1720631000-PS-000

Sales Drawing

2002412000-000

This document was generated on 09/29/2020

PLEASE CHECK WWW.MOLEX.COM FOR LATEST PART INFORMATION