



# Part Number **XX-666000-00** **SOIC to SOWIC Adapter**

### FEATURES:

- Allows the use of a narrow package IC in place of a wide one.

### SPECIFICATIONS:

- Leads are mechanically fastened and soldered to adapters PCB substrate.
- PCB is FR-4, .062 [1.56] or .094 [2.39] thick manufactured to IPC-600E Class 2 standards.
- Male pin is Brass Alloy 360 1/2 hard per UNS C36000 ASTM-B16-85.
- Male pin plating is 200µ [5.08µm] min. Tin per MIL-T-10727 Type 1 or Tin/Lead 90/10 MIL-P-81728 over 100µ [2.54µm] Nickel per QQ-N-290.
- Operating temperature=221°F [105°C].
- All C.A.C's are manufactured and inspected using IPC-610B Class 2 guidelines.

### MOUNTING CONSIDERATIONS:

- Standard through hole mounting to PCB
- Small package can be IR reflowed, vapor phased, or simply hand soldered.



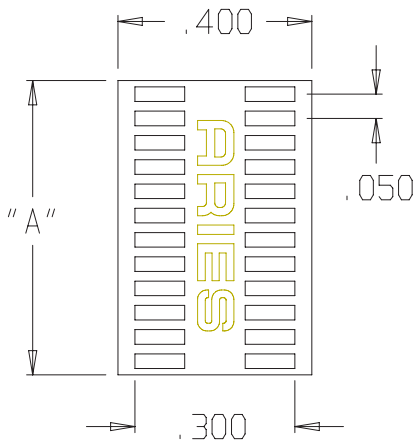
*Note: Aries specializes in custom design and production. In addition to the standard products shown on this page, special materials, platings, sizes, and configurations can be furnished, depending on quantities. Aries reserves the right to change product specifications without notice.*

### ORDERING INFORMATION

**XX-666000-00**

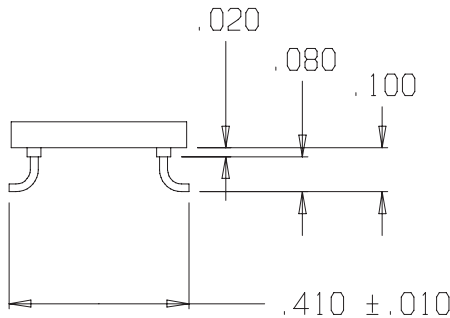
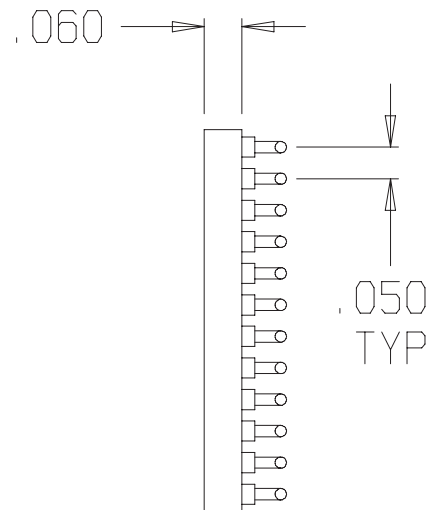
No. of conductors:  
8-24

Surface Mount  
Series number



**PADS ARE .076 X .024**

**A DIMENSION = 1/2 x  
TOTAL PIN COUNT x  
.050" + .030"**



**ALL DIMENSIONS: INCHES [MILLIMETERS]**

All tolerances ± .005 [.13]  
unless otherwise specified

**ARIES**<sup>®</sup>  
ELECTRONICS, INC.  
<http://www.arieselec.com> • [info@arieselec.com](mailto:info@arieselec.com)

**NORTH AMERICA**  
Frenchtown, NJ USA  
TEL: (908) 996-6841  
FAX: (908) 996-3891



**EUROPE**  
TEL: +44 870 240 0249  
FAX: +44 871 919 6033  
[europa@arieselec.com](mailto:europa@arieselec.com)

18044  
REV.F