



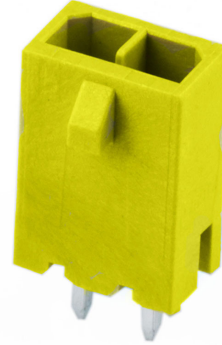
Part Number : [2165711043](#)

Product Description : Micro-Fit+ Versa Color Vertical Header, Through Hole, 3.00mm Pitch, Single Row, 3 Circuits, Matte Tin (Sn) Plating, Glow-Wire Capable, Yellow

Series Number : 216571

Status : Active

Product Category : PCB Headers and Receptacles



Documents & Resources

Drawings

[2165711043_sd.pdf](#)

[2165710002-PK-000.pdf](#)

3D Models and Design Files

[2165711043_stp.zip](#)

Specifications

[2064600001-AS-000.pdf](#)

[2064600000-PS-000.pdf](#)

[2064600001-TS-000.pdf](#)

[2157590005-TS-000.pdf](#)

Product Environment Compliance

Compliance

GADSL/IMDS	Not Relevant
China RoHS	
EU ELV	Not Relevant
Low-Halogen Status	Low-Halogen per IEC 61249-2-21
REACH SVHC	Not Contained per D(2024)6225-DC (07 Nov 2024)
EU RoHS	Compliant per EU 2015/863

Multiple Part Product Compliance Statements

- Eu RoHS
- REACH SVHC
- Low-Halogen

Multiple Part Industry Compliance Documents

- IPC 1752A Class C
- IPC 1752A Class D
- Molex Product Compliance Declaration
- IEC-62474
- chemSHERPA (xml)

EU RoHS Certificate of Compliance

Part Details

General

Status	Active
Category	PCB Headers and Receptacles
Series	216571
Description	Micro-Fit+ Versa Color Vertical Header, Through Hole, 3.00mm Pitch, Single Row, 3 Circuits, Matte Tin (Sn) Plating, Glow-Wire Capable, Yellow
Application	Power, Wire-to-Board
Component Type	PCB Header
Product Name	Micro-Fit+ Versa Color
UPC	196823366567

Agency

CSA	LR19980
UL	E29179

Electrical

Current - Maximum per Contact	13.0A
Voltage - Maximum	600V AC (RMS)/DC

Physical

Breakaway	No
Circuits (Loaded)	3
Circuits (maximum)	3
Color - Resin	Yellow
Durability (mating cycles max)	25

First Mate / Last Break	No
Flammability	94V-0
Glow-Wire Capable	Yes
Keying to Mating Part	Yes
Lock to Mating Part	Yes
Material - Metal	High Copper Alloy
Material - Plating Mating	Matte Tin
Material - Plating Termination	Matte Tin
Material - Resin	Liquid Crystal Polymer
Net Weight	0.500/g
Number of Rows	1
Orientation	Vertical
Packaging Type	Tray
PC Tail Length	3.18mm
PCB Retention	Yes
PCB Thickness - Recommended	1.57mm
Pitch - Mating Interface	3.00mm
Pitch - Termination Interface	3.00mm
Polarized to Mating Part	Yes
Polarized to PCB	Yes
Shrouded	Yes
Temperature Range - Operating	-40° to +125°C
Termination Interface Style	Through Hole

Mates With / Use With

Mates with Part(s)

Description	Part Number
Micro-Fit+ Single Row Receptacle Housings	<u>215759</u>