

# MICRO SWITCH

FREERPORT ILLINOIS, U.S.A  
A DIVISION OF HONEYWELL  
FED. MFG. CODE 91929

# SWITCH - BASIC

CATALOG LISTING

# ISE197

ISE197

M

DRAWING NUMBER

ISSUE 2 4

REVISIONS

A	NEW DWG PR-6594
J A L	8 JUL 77
B	C056103
CJH	12 NOV 84
C	C057041A
CJH	21 MAR 85

REPLACES

RELEASE NO. PR-6594

CHECK

CHECK

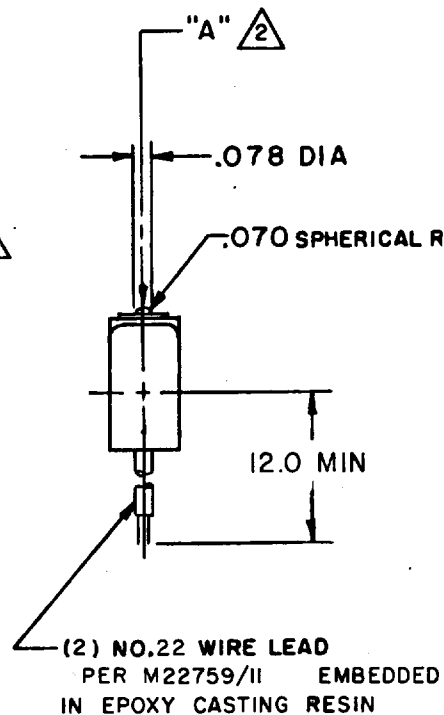
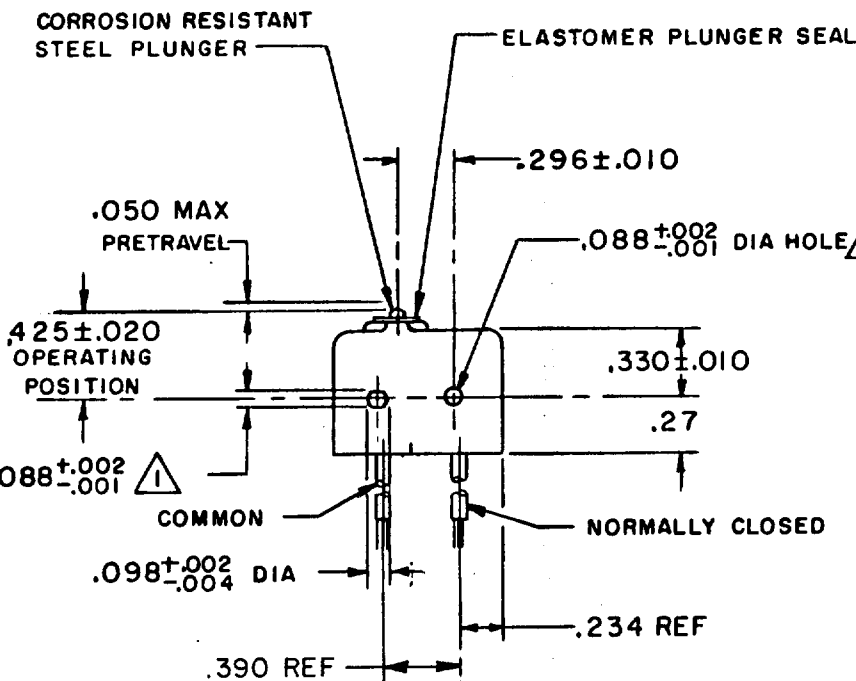
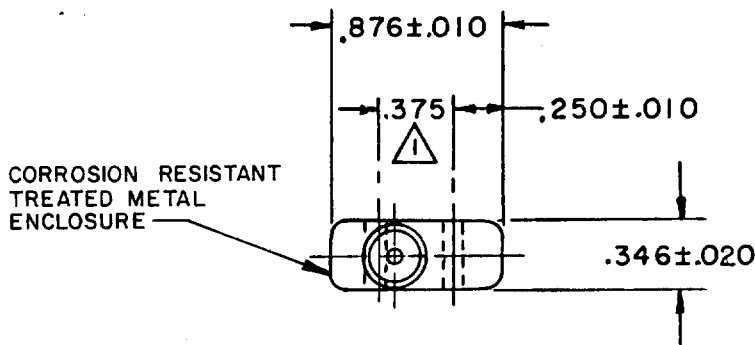
11 JULY 77

C E B

CHECK

77

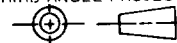
J A L



- NOTE-
- 1 - MOUNTING HOLES WILL ACCEPT .087 MAX DIA PINS OR SCREWS ON .375±.002 CENTERS
  - 2 - ACTUATION IN LINE WITH ARROW "A" IS RECOMMENDED
  - 3 - WEIGHT OF SWITCH ONLY IS .26 OZ MAX, WEIGHT OF SWITCH WITH WIRE LEADS IS .50 OZ MAX

THIS DRAWING COVERS A PROPRIETARY ITEM AND IS THE PROPERTY OF MICRO SWITCH, A DIVISION OF HONEYWELL. THIS DRAWING IS NOT TO BE COPIED OR USED WITHOUT THE APPROVAL OF MICRO SWITCH.

THIRD ANGLE PROJECTION



### CHARACTERISTICS

OPERATING FORCE	5-17 OZ MIN
RELEASE FORCE	4 OZ MIN
RELEASE TRAVEL	.004 MIN
DIFFERENTIAL TRAVEL	.004 MAX
OVERTRAVEL	.003 MIN

### ELECTRICAL DATA

CONTACT ARRANGEMENT	S P N C
250 VAC	5 AMP
30 VOLTS DC RATING	
INDUCTIVE	SEA LEVEL - 3 AMP 50,000 FT - 2.5 AMP
RESISTIVE	SEA LEVEL - 5 AMP 50,000 FT - 5 AMP
MAXIMUM INRUSH	24 AMP

SCALE FULL

DO NOT SCALE PRINT

#### TOLERANCES

APPLY TO DESIGN UNITS. CONVERSIONS ARE ONLY FOR REFERENCE. UNLESS NOTED, TOLERANCES ARE ±

DIM.	TOL.	DIM.	TOL.
mm	mm/in	in	mm/in
NO PLACES	X	1/.04	X X
ONE PLACE	X, X	0.4/.016	X X
TWO PLACES	X, X, X	0.15/.006	X, X, X
THREE PLACES	X, X, X, X		X, X, X, X
ANGLES			

DESIGN UNITS

SI METRIC

US CUSTOMARY

WEIGHT

3

FD-52848-A

DRAWN