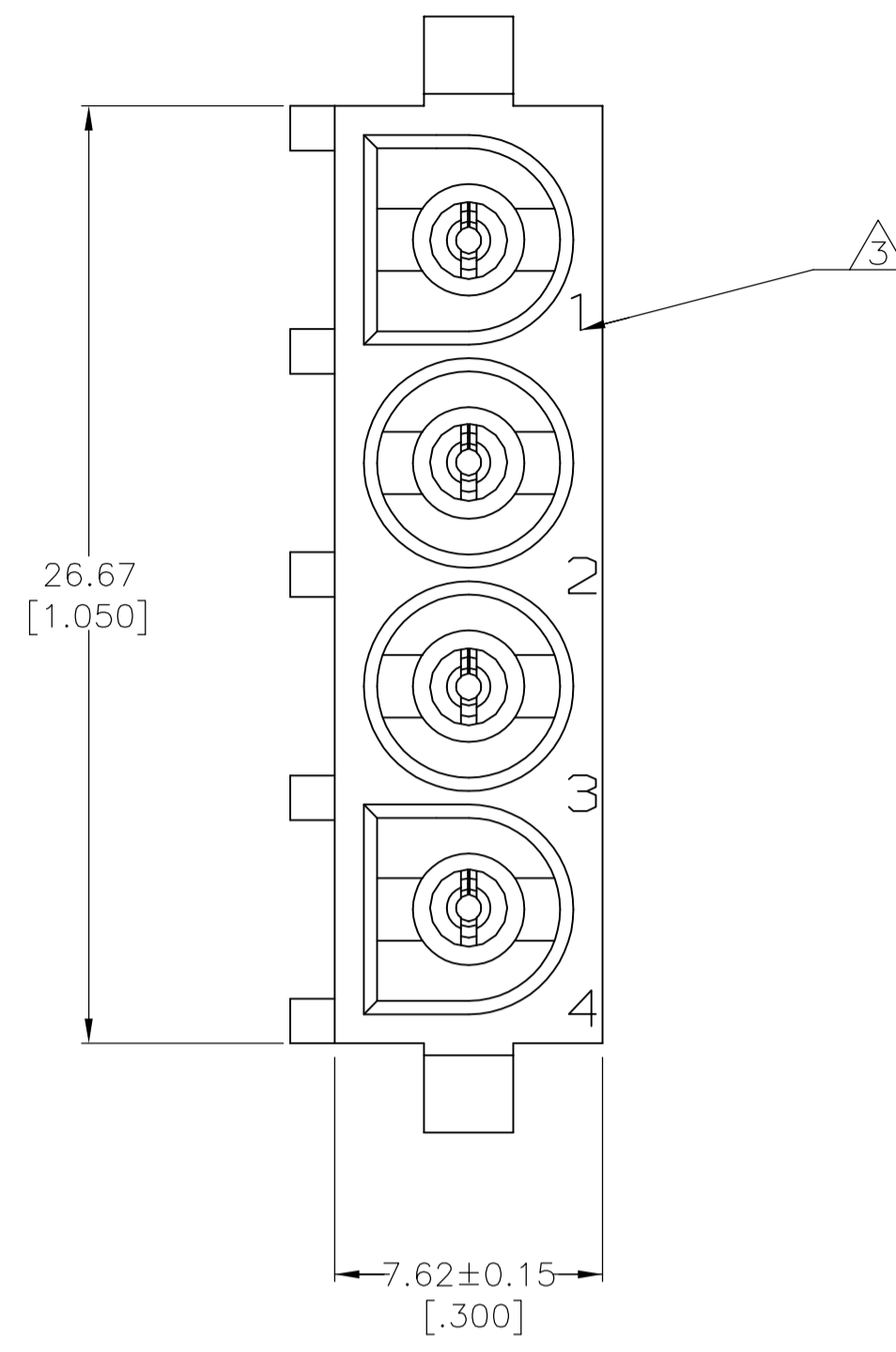
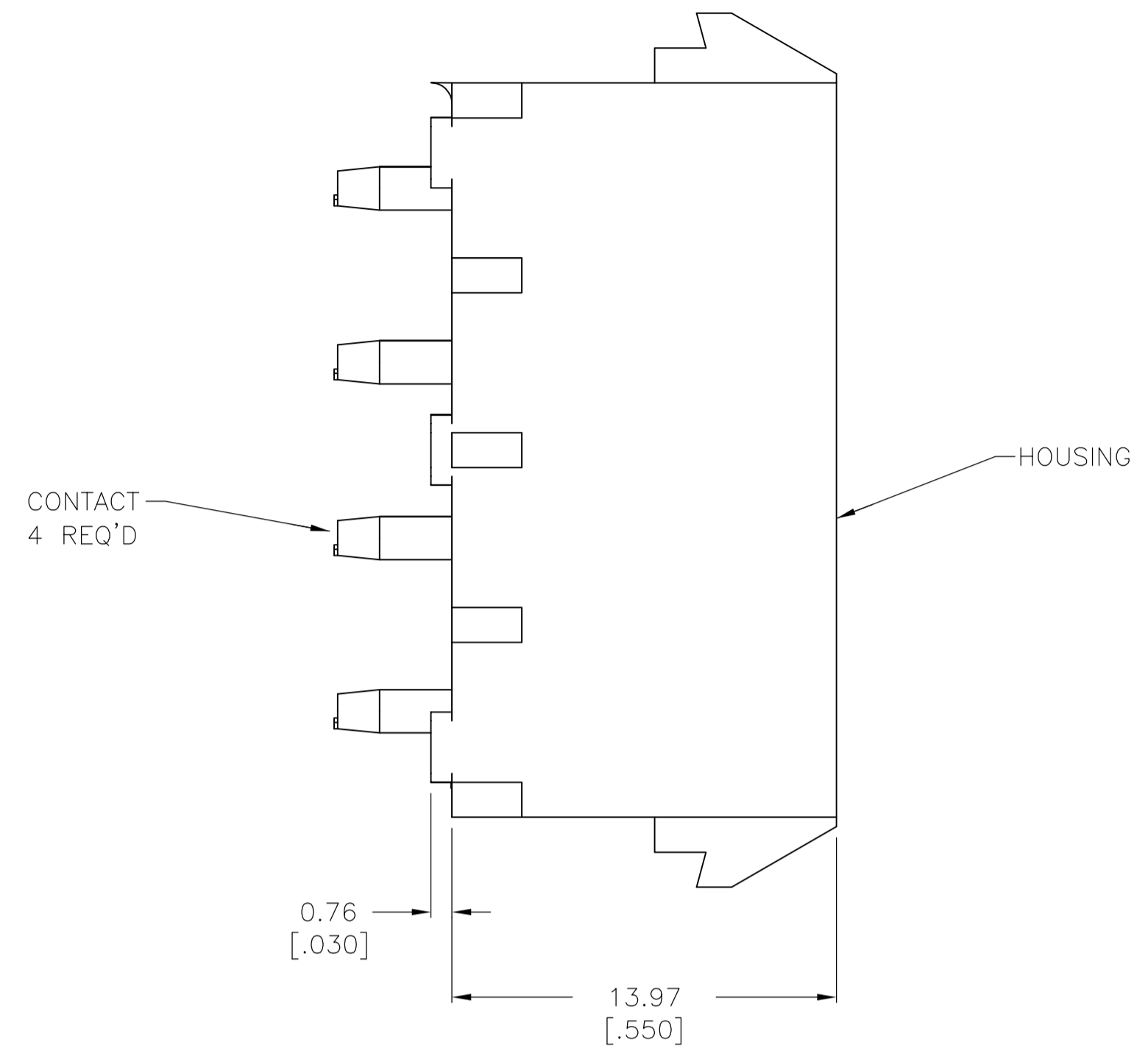
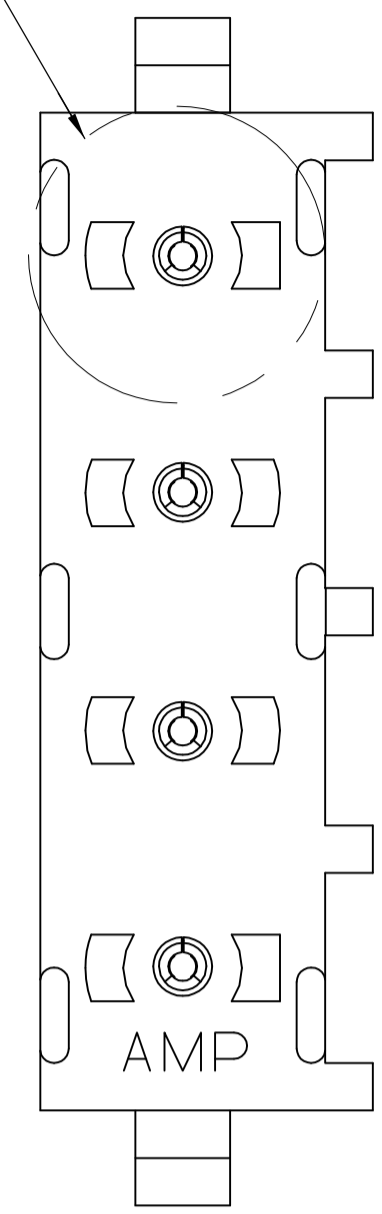
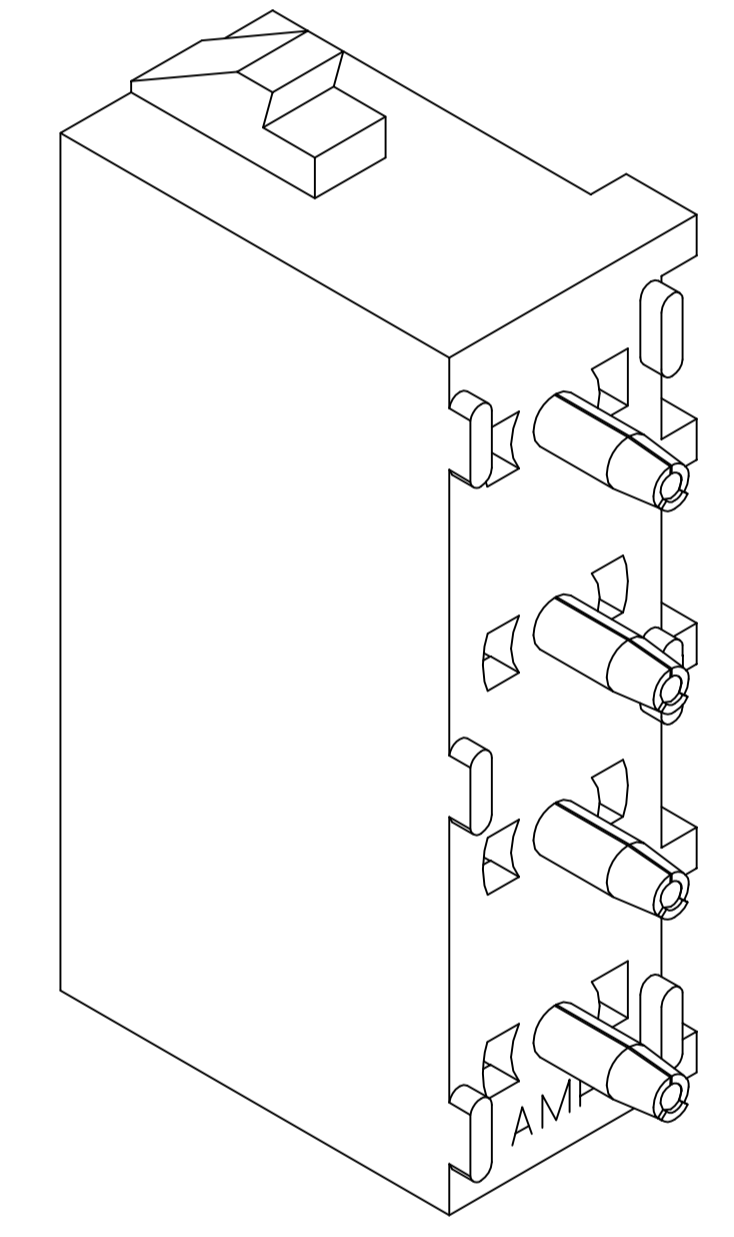
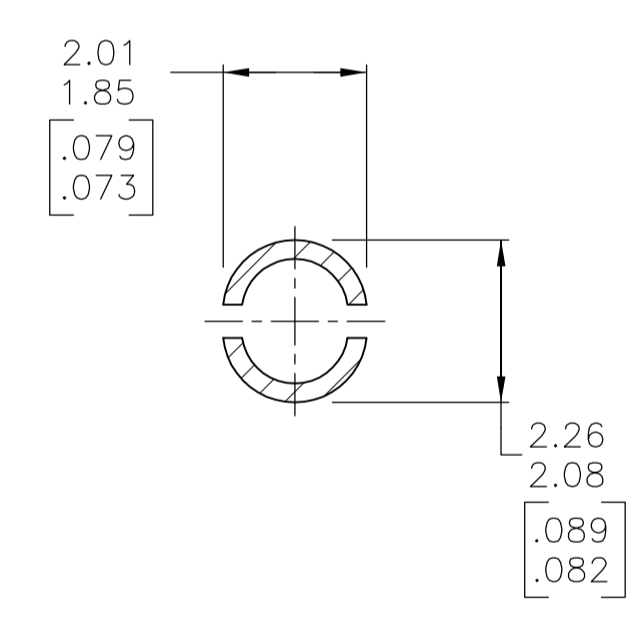
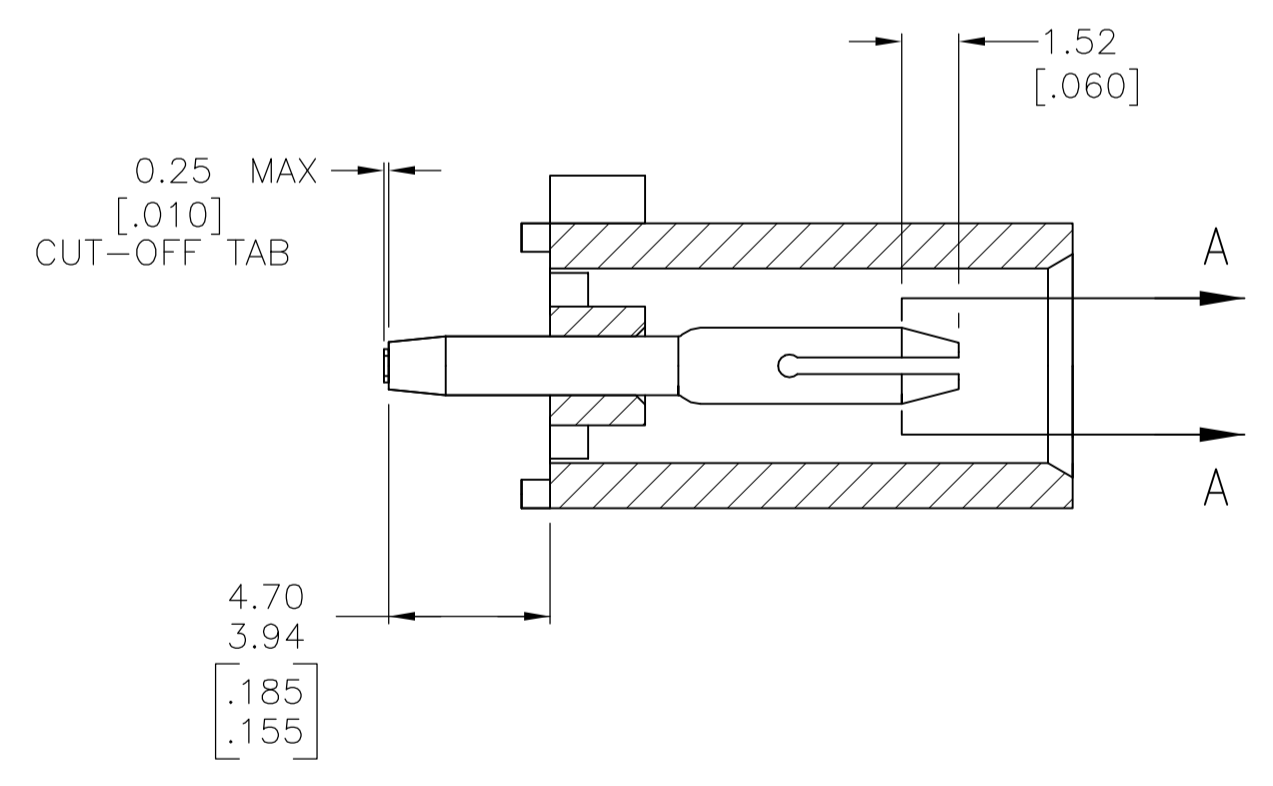


REVISIONS					
P	LTR	DESCRIPTION	DATE	DRN	APVD
A1		REVISED PER ECR-17-007706	05JUL2017	JB	SD

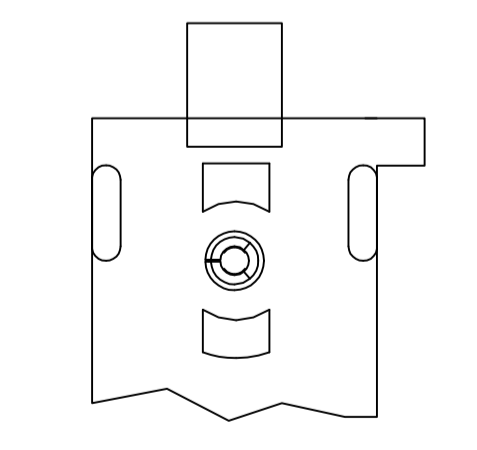
SEE DETAIL A



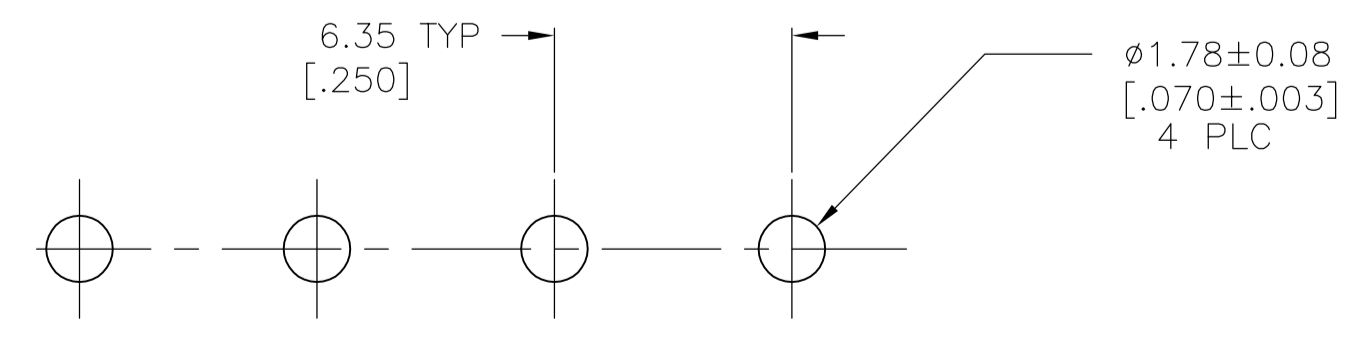
- 1 PARTS COMPLY TO TE SOLDERABILITY SPECIFICATION 109-11-3.
- △ DRAIN HOLES LOCATED AS SHOWN. OPTIONAL CONSTRUCTION - ALL DRAIN HOLES LOCATED 90° AS SHOWN IN DETAIL A.
- △ CIRCUIT IDENTIFICATION CHARACTERS ARE ADJACENT TO THE INDICATED CAVITIES, BUT LOCATION AND ORIENTATION MAY DIFFER FROM PRINT.
- 4 DIMENSIONS IN BRACKETS ARE IN INCHES.
- 5 FLAMMABILITY UL V-0 FOR THICKNESS 0.4, 0.45, 0.8, 1.6, AND 3.0 PER IEC 60695-11-10.
- 6 GLOW WIRE FLAMMABILITY (GWFI): 960°C FOR THICKNESS 0.45, 0.8, 1.6, AND 3.0 PER IEC 60695-2-12.
- 7 GLOW WIRE IGNITION (GWIT): 825°C FOR THICKNESS 0.45, 800°C FOR THICKNESS 0.8, 775°C FOR THICKNESS 1.6 AND 3.0 PER IEC 60695-2-13.



3-DIMENSIONAL MODEL NTS



DETAIL A
OPTIONAL CONSTRUCTION
△



RECOMMENDED MOUNTING HOLE PATTERN
FOR 1.57 [.062] THICK P.C. BOARD

PHOSPHOR BRONZE, PRE-TIN	NYLON, UL V-0 CW	1969807-1
PIN CONTACT MATERIAL AND FINISH	HOUSING MATERIAL	PART NUMBER
THIS DRAWING IS A CONTROLLED DOCUMENT.		DRN: BASVESH WARD 02JAN2016
DIMENSIONS: mm [INCHES]		DRW: WICKES EVAN 02JAN2016
TOLERANCES UNLESS OTHERWISE SPECIFIED:		APVD: WICKES EVAN 02JAN2016
0 PLC ±	1 PLC ±	NAME: WICKES EVAN
2 PLC ± 0.13 [.005]	3 PLC ±	PRODUCT SPEC: -
4 PLC ±	ANGLES ± 0°30'	APPLICATION SPEC: -
MATERIAL: SEE TABLE	FINISH: SEE TABLE	WEIGHT: 0.000000
CUSTOMER DRAWING		SIZE: A1 00779
SCALE: 5:1		SHEET: 1 OF 1
REV: A1		RESTRICTED TO: -