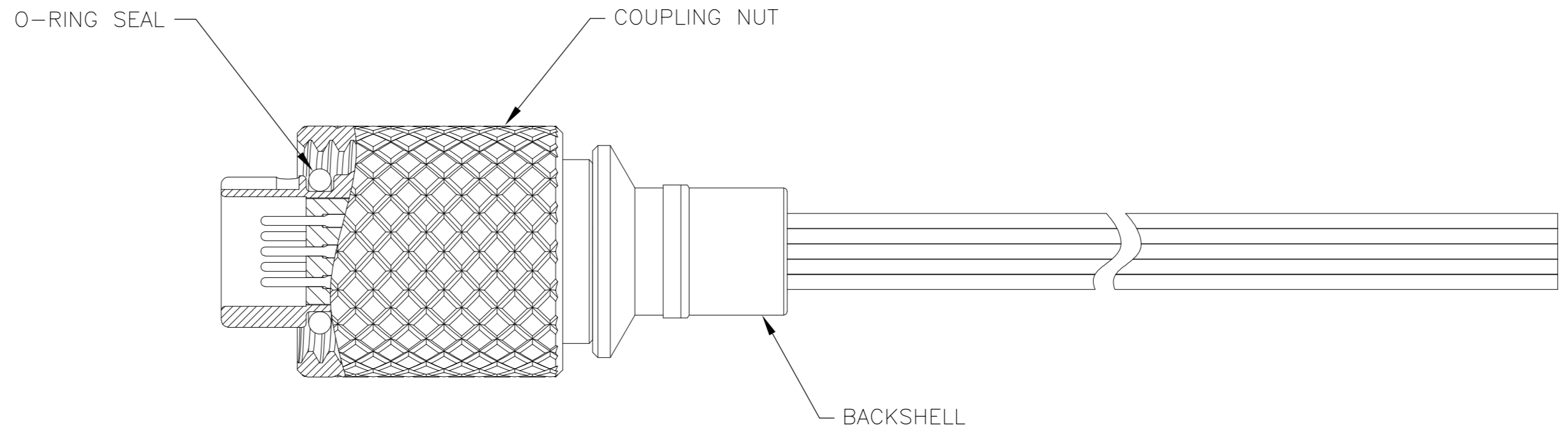
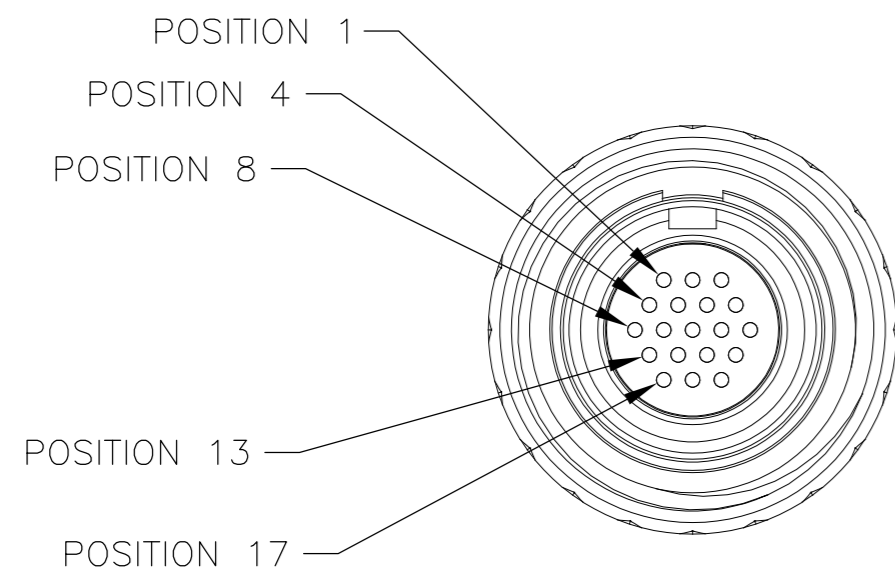
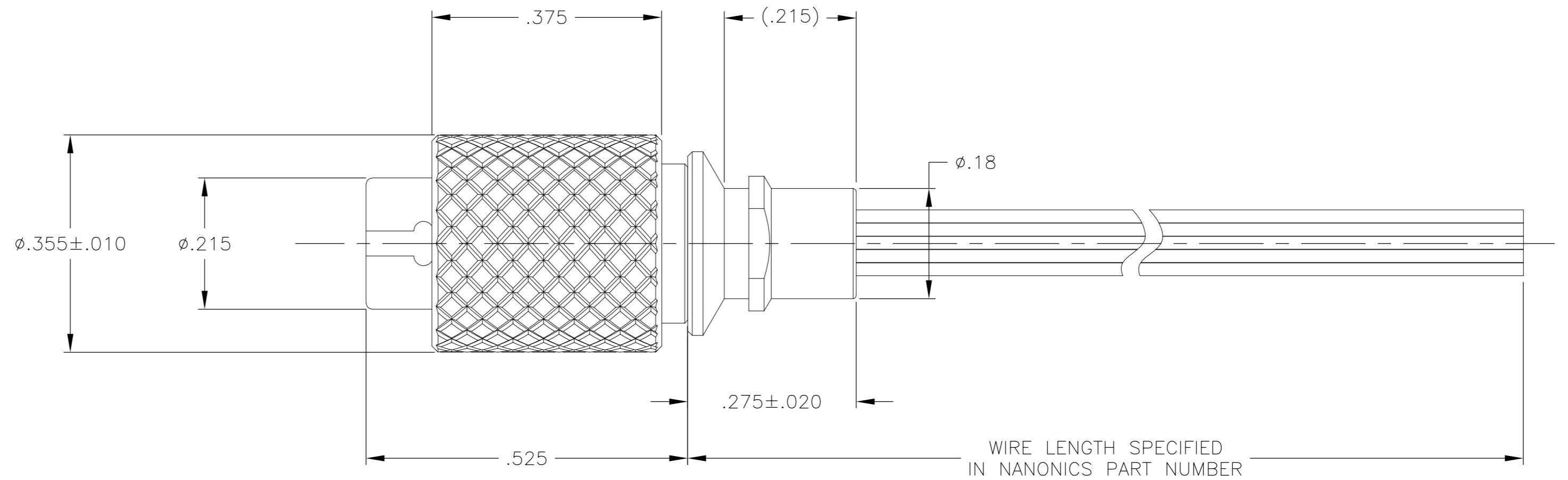


THIS DRAWING IS UNPUBLISHED. RELEASED FOR PUBLICATION  
 © COPYRIGHT - By - ALL RIGHTS RESERVED.

LOC		DIST		REVISIONS			
P	LTR	DESCRIPTION		DATE	DWN	APVD	
	B	UPDATE PER ECO-11-013272		28 JUN11	CAS	MKS	



- CONNECTOR BODY MATERIAL: 303 STAINLESS STEEL, PASSIVATED PER SAE-AMS-2700  
 COUPLING NUT AND BACKSHELL MATERIAL: 6061-T6 ALUMINUM, ELECTROLESS NICKEL PLATED PER SAE-AMS-C-26074 OR SAE-AMS-2404E  
 LOCKING RING MATERIAL: BERYLLIUM COPPER, ELECTROLESS NICKEL PLATED PER SAE-AMS-C-26074 OR SAE-AMS-2404E  
 INSULATOR MATERIAL: LIQUID CRYSTAL POLYMER (LCP) PER ASTM D5138 OR POLYPHENYLENE SULFIDE (PPS) PER ASTM D4067  
 O-RING MATERIAL: FLUOROSILICONE
- WIRE TERMINATION: 28 AWG SOLID, 30 AWG STRANDED WIRE OR SMALLER
- BONDING RESISTANCE BETWEEN CONNECTOR BODY AND BACKSHELL TO BE 25 MILLIOHMS MAXIMUM. BACKSHELL TO BE BONDED TO PLUG SHELL WITH CONDUCTIVE EPOXY.
- LUBRICATE O-RING WITH PARKER SUPER-O-LUBE PRIOR TO INSTALLATION
- THIS DRAWING ALSO IDENTIFIED AS NANONICS 303-0165

THIS DRAWING IS A CONTROLLED DOCUMENT.		DWN	C SCHOLL	25 JAN 10		TE Connectivity		
DIMENSIONS: INCHES		CHK	M STORRY	25 JAN 10		NAME		
TOLERANCES UNLESS OTHERWISE SPECIFIED:		APVD	-	-		PRODUCT SPEC		
0 PLC ± - 1 PLC ± - 2 PLC ± .010 3 PLC ± .005 4 PLC ± - ANGLES ± 1° FINISH SEE NOTES		APPLICATION SPEC		PLUG ASSEMBLY, CIRCULAR, THREADED COUPLING W/ STAINLESS STEEL SHELL, STRAIGHT BACKSHELL, 19 POSITION				
MATERIAL SEE NOTES		WEIGHT	-	-	SIZE	CAGE CODE	DRAWING NO	RESTRICTED TO
SEE NOTES		CUSTOMER DRAWING		SCALE	A2	OPJN9	C=1925115	-
				SCALE	6:1	SHEET	1 of 1	REV B