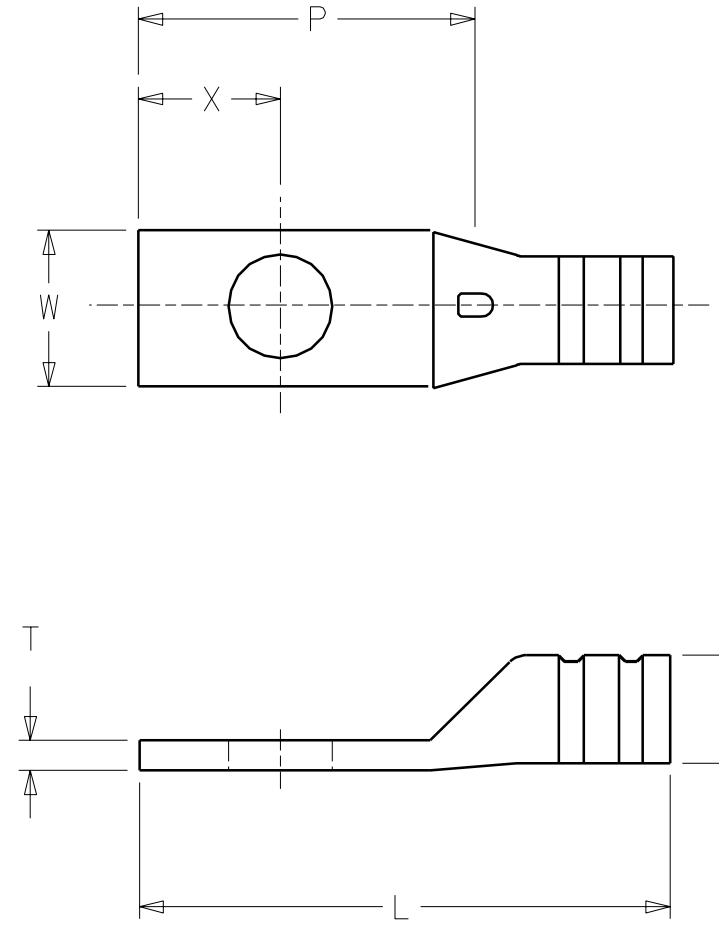


MATERIAL NO.	MOLEX-ETC PART #	AWG WIRE RANGE	COLOR CODE	STUD SIZE	"L"	"W"	"P"	"X"	"D"	"T"
192210315	HDCL-810-CC	8	RED	10	1.640	0.343	0.656	0.250	0.250	0.078
192210316	HDCL-614-CC	6	BLUE	1/4	1.703	0.406	0.656	0.250	0.281	0.078
192210317	HDCL-414-CC	4	GRAY	1/4	1.750	0.500	0.703	0.296	0.359	0.109
192210323	HDCL-214-CC	2	BROWN	1/4	2.062	0.609	0.796	0.296	0.437	0.125
192210324	HDCL-2516-CC	2	BROWN	5/16	2.062	0.609	0.796	0.343	0.437	0.125
192210334	HDCL-114-CC	1	GREEN	1/4	2.156	0.687	0.203	0.343	0.484	0.140
192210335	HDCL-1516-CC	1	GREEN	5/16	2.156	0.687	0.203	0.343	0.484	0.140
192210336	HDCL-10516-CC	1/0	PINK	5/16	2.343	0.765	0.937	0.343	0.531	0.140
192210337	HDCL-1038-CC	1/0	PINK	3/8	2.343	0.765	0.937	0.390	0.531	0.140
192210338	HDCL-2038-CC	2/0	BLACK	3/8	2.500	0.828	1.078	0.390	0.578	0.140
192210339	HDCL-2012-CC	2/0	BLACK	1/2	2.500	0.828	1.078	0.453	0.578	0.140
192210325	HDCL-3038-CC	3/0	ORANGE	3/8	2.703	0.903	1.156	0.453	0.625	0.140
192210326	HDCL-3012-CC	3/0	ORANGE	1/2	2.703	0.906	1.156	0.453	0.625	0.140
192210327	HDCL-4038-CC	4/0	PURPLE	3/8	3.046	1.015	1.203	0.453	0.703	0.156
192210328	HDCL-4012-CC	4/0	PURPLE	1/2	3.046	1.015	1.203	0.500	0.703	0.156
192210329	HDCL-25038-CC	250mcm	YELLOW	3/8	3.343	1.140	1.250	0.500	0.718	0.187
192210330	HDCL-25012-CC	250mcm	YELLOW	1/2	3.343	1.140	1.250	0.500	0.718	0.187
192210331	HDCL-30038-CC	300mcm	WHITE	3/8	3.500	1.218	1.265	0.500	0.843	0.187
192210332	HDCL-30012-CC	300mcm	WHITE	1/2	3.500	1.218	1.265	0.500	0.843	0.187
192210333	HDCL-35038-CC	350mcm	RED	3/8	3.703	1.312	1.312	0.562	0.906	0.203
192210340	HDCL-35012-CC	350mcm	RED	1/2	3.703	1.312	1.312	0.562	0.906	0.203
192210341	HDCL-40038-CC	400mcm	BLUE	3/8	3.890	1.406	1.421	0.562	0.968	0.218
192210342	HDCL-40012-CC	400mcm	BLUE	1/2	3.890	1.406	1.421	0.562	0.968	0.218
192210343	HDCL-50038-CC	500mcm	BROWN	3/8	4.500	1.578	1.437	0.562	1.093	0.250
192210344	HDCL-50012-CC	500mcm	BROWN	1/2	4.500	1.578	1.437	0.562	1.093	0.250



NOTES:
 1. MATERIAL: COPPER.
 2. PLATING: TIN.

CUSTOMER DRAWING

A	RELEASE CUSTOMER ETC2000-0293 00/07/11 BD
LTR.	REVISIONS

DIMENSIONS SHOWN (METRIC) INCH		REVISE ONLY ON CAD SYSTEM																			
UNLESS OTHERWISE SPECIFIED TOLERANCES: ANGULAR ± 1/2°		TITLE HEAVY DUTY COMPRESSION LONG BARREL / ONE HOLE																			
<table border="1"> <thead> <tr> <th></th> <th>INCH</th> <th>METRIC</th> </tr> </thead> <tbody> <tr> <td>3 PLACE</td> <td>± ---</td> <td>± ---</td> </tr> <tr> <td>2 PLACE</td> <td>± ---</td> <td>± ---</td> </tr> <tr> <td>1 PLACE</td> <td>± ---</td> <td>± ---</td> </tr> </tbody> </table>			INCH	METRIC	3 PLACE	± ---	± ---	2 PLACE	± ---	± ---	1 PLACE	± ---	± ---	<table border="1"> <tr> <td>molex ETC INC.</td> <td>SHEET NO.</td> <td>DATE</td> </tr> <tr> <td>PINELLAS PARK, FLA. 33781 U.S.A.</td> <td></td> <td>00/06/22</td> </tr> </table>		molex ETC INC.	SHEET NO.	DATE	PINELLAS PARK, FLA. 33781 U.S.A.		00/06/22
	INCH	METRIC																			
3 PLACE	± ---	± ---																			
2 PLACE	± ---	± ---																			
1 PLACE	± ---	± ---																			
molex ETC INC.	SHEET NO.	DATE																			
PINELLAS PARK, FLA. 33781 U.S.A.		00/06/22																			
DRAFT WHERE APPLICABLE MUST REMAIN WITHIN DIMENSIONS		PART NO. SEE CHART																			
<table border="1"> <tr> <td>DRWG. BY BD</td> <td>CHK'D. BY RWD</td> </tr> <tr> <td>APP'D. BY RWD</td> <td>SCALE NO: NE</td> </tr> </table>		DRWG. BY BD	CHK'D. BY RWD	APP'D. BY RWD	SCALE NO: NE	<table border="1"> <tr> <td>FILE NAME 19221485 DGN</td> <td>THIS DRAWING CONTAINS INFORMATION THAT IS PROPRIETARY TO MOLEX-ETC INC. AND SHOULD NOT BE USED WITHOUT WRITTEN PERMISSION.</td> <td>DIV.</td> <td>SIZE B</td> </tr> </table>		FILE NAME 19221485 DGN	THIS DRAWING CONTAINS INFORMATION THAT IS PROPRIETARY TO MOLEX-ETC INC. AND SHOULD NOT BE USED WITHOUT WRITTEN PERMISSION.	DIV.	SIZE B										
DRWG. BY BD	CHK'D. BY RWD																				
APP'D. BY RWD	SCALE NO: NE																				
FILE NAME 19221485 DGN	THIS DRAWING CONTAINS INFORMATION THAT IS PROPRIETARY TO MOLEX-ETC INC. AND SHOULD NOT BE USED WITHOUT WRITTEN PERMISSION.	DIV.	SIZE B																		
		DRWG. NO. SD-19221-485																			