

## Han 3A-PFT-SL-M20

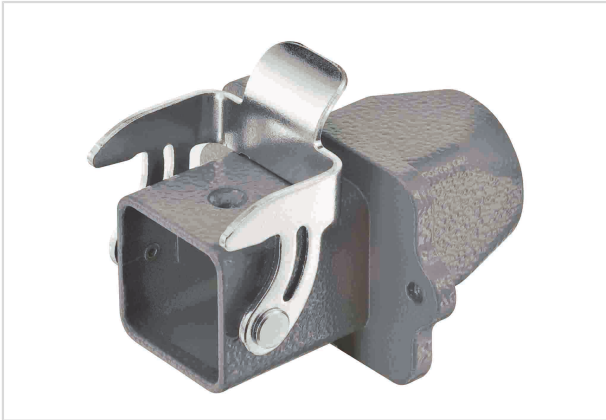


Image is for illustration purposes only. Please refer to product description.

Part number	19 20 003 1120
Specification	Han 3A-PFT-SL-M20
HARTING eCatalogue	<a href="https://b2b.harting.com/19200031120">https://b2b.harting.com/19200031120</a>

### Identification

Category	Hoods/Housings
Series of hoods/housings	Han A <sup>®</sup>
Type of hood/housing	Panel feed through housing

### Version

Locking type	Single locking lever
Size	3 A
Version	Top entry
Cable entry	1x M20
Field of application	Standard Hoods/housings for industrial applications

### Technical characteristics

Limiting temperature	-40 ... +125 °C
Degree of protection acc. to IEC 60529	IP44 IP65 / IP67 with seal screw 09 20 000 9918
Type rating acc. to UL 50 / UL 50E	12

### Material properties

Material (hood/housing)	Zinc die-cast
Surface (hood/housing)	Powder-coated
Colour (hood/housing)	RAL 7037 (dust grey)
Material (seal)	NBR
Material (locking)	Steel



Pushing Performance

## Material properties

Surface (locking)	Zinc plated
RoHS	compliant with exemption
RoHS exemptions	6(a) / 6(a)-I: Lead as an alloying element in steel for machining purposes and in galvanised steel containing up to 0,35 % lead by weight / Lead as an alloying element in steel for machining purposes containing up to 0,35 % lead by weight and in batch hot dip galvanised steel components containing up to 0,2 % lead by weight
ELV status	compliant with exemption
China RoHS	50
REACH Annex XVII substances	No
REACH ANNEX XIV substances	No
REACH SVHC substances	Yes
REACH SVHC substances	Lead

## Specifications and approvals

Approvals	DNV GL
CE	Yes

## Commercial data

Packaging size	10
Net weight	100.06 g
Country of origin	Germany
European customs tariff number	85389099
eCl@ss	27440202 Shell for industrial connectors