

NOTES:

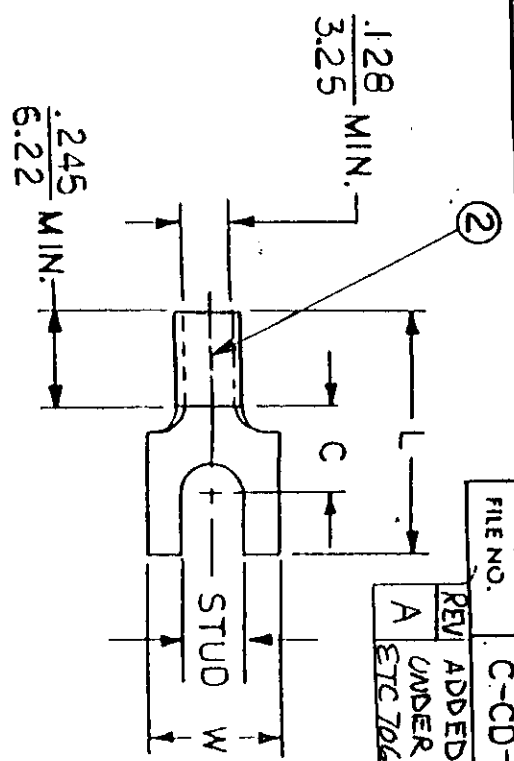
- ① MAT'L: COPPER (STOCK THK. $\frac{.040}{.102}$)
PLATING: ELECTRO-FIN (.0003 MIN.)
- ② BRAZED SEAM

STUD SIZES: ($\pm .005$)

- 02 = .094
- 04 = .119
- 06 = .146
- 08 = .173
- 10 = .198
- 14 = .265
- 56 = .328
- 38 = .390

"UL" LISTING #E32244
"CSA" LISTING #18689

ALL DIMENSIONS = $\frac{\text{INCHES}}{\text{MM}}$



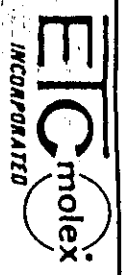
FILE NO. C-CD-303-01

REV	ADDED	BY	DATE
A	UNDER PART # 3105	ETC	7/31/88

WIRE SIZE: 12-10 AWG
40-60 MM

PART NUMBER	"W" ±.010	"C" MIN.	"L" MAX.	AVAILABLE STUD SIZES
C-3102	$\frac{.415}{.3041}$	$\frac{.305}{.725}$	$\frac{.784}{.19.91}$	08
C-3105	$\frac{.520}{8.13}$	$\frac{.505}{7.75}$	$\frac{.784}{.19.91}$	06, 08, 10

DIMENSIONAL TOLERANCES UNLESS OTHERWISE SPECIFIED		REFERENCE	SCALE: NTS	DATE	TITLE:
FRAC	DEC	ANG	DRWN. BY: JJ	11-28-84	SPADE TONGUE TERMINAL
			CHKD. BY: GZ	11-30-84	VERSAKRIMP 300-SERIES
			APPRD. BY:		



DWG. NO. A CUSTOMER DWG.