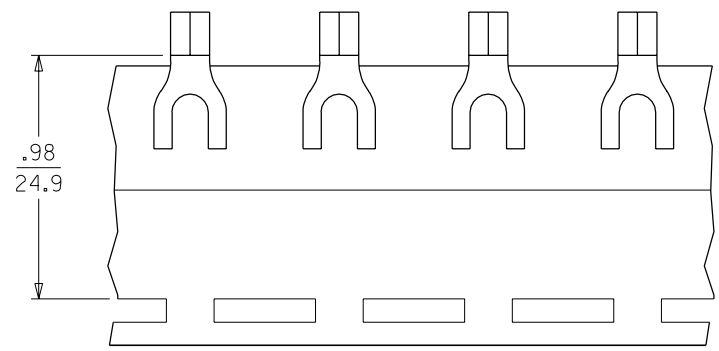
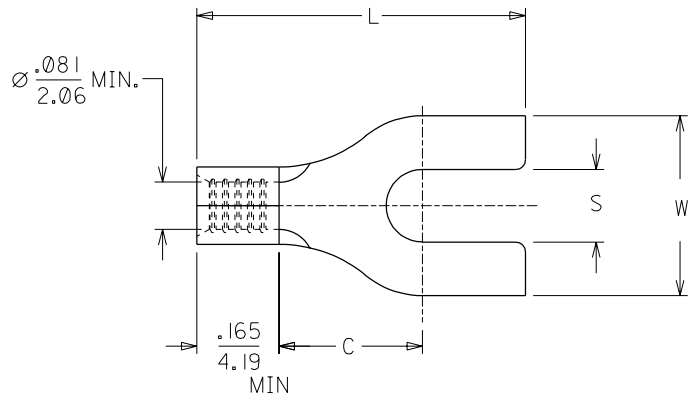


	10	9	8	7	6	5	4	3	2	1	
	MATERIAL NUMBER	ALTERNATE NUMBER	STUD SIZE	"S" ±.005/(0.13)	"W" ±.010/(0.25)	"C"	"L"	PACKAGING			
F	191410050	BB-107-04	4	.119/(3.02)	.245/(6.22)	.209/(5.31)	.565/(14.35)	LOOSE PIECE			
	191410052	BB-107-06	6	.146/(3.71)	.245/(6.22)	.209/(5.31)	.565/(14.35)				
	191410054	BB-124-04	4	.119/(3.02)	.295/(7.49)	.211/(5.36)	.564/(14.33)				
	191410056	BB-124-06	6	.146/(3.71)	.295/(7.49)	.211/(5.36)	.564/(14.33)				
	191410058	BB-124-08	8	.173/(4.39)	.295/(7.49)	.211/(5.36)	.564/(14.33)				
	191410061	BB-127-06	6	.146/(3.71)	.362/(9.19)	.269/(6.83)	.687/(17.45)				
	191410063	BB-127-08	8	.173/(4.39)	.388/(9.85)	.269/(6.83)	.687/(17.45)				
	191410065	BB-127-10	10	.198/(5.03)	.388/(9.85)	.269/(6.83)	.687/(17.45)				
E	191410051	BB-107-04T	4	.119/(3.02)	.245/(6.22)	.209/(5.31)	.565/(14.35)	TAPE MOUNTED			
	191410053	BB-107-06T	6	.146/(3.71)	.245/(6.22)	.209/(5.31)	.565/(14.35)				
	191410055	BB-124-04T	4	.119/(3.02)	.295/(7.49)	.211/(5.36)	.564/(14.33)				
	191410057	BB-124-06T	6	.146/(3.71)	.295/(7.49)	.211/(5.36)	.564/(14.33)				
	191410059	BB-124-08T	8	.173/(4.39)	.295/(7.49)	.211/(5.36)	.564/(14.33)				
	191410062	BB-127-06T	6	.146/(3.71)	.362/(9.19)	.269/(6.83)	.687/(17.45)				
	191410064	BB-127-08T	8	.173/(4.39)	.388/(9.85)	.269/(6.83)	.687/(17.45)				
	191410066	BB-127-10T	10	.198/(5.03)	.388/(9.85)	.269/(6.83)	.687/(17.45)				



PARTS ON TAPE



NOTES:
 1. MATERIAL: COPPER .031/(.79) THICK.
 2. PLATING: ELECTRO-TIN.
 3. ALL DIMENSIONS IN INCHES/(MM).

CUSTOMER DRAWING

A	VOIDS BB-CD-103-02 ETC1999-0055 1999/11/12 HEB
LTR.	REVISIONS

DIMENSIONS SHOWN (METRIC) INCH UNLESS OTHERWISE SPECIFIED TOLERANCES: ANGULAR ± 1/2°		REVISE ONLY ON CAD SYSTEM													
<table border="1"> <thead> <tr> <th></th> <th>INCH</th> <th>METRIC</th> </tr> </thead> <tbody> <tr> <td>3 PLACE</td> <td>± .005</td> <td>± ---</td> </tr> <tr> <td>2 PLACE</td> <td>± .01</td> <td>± 0.13</td> </tr> <tr> <td>1 PLACE</td> <td>± ---</td> <td>± 0.25</td> </tr> </tbody> </table>			INCH	METRIC	3 PLACE	± .005	± ---	2 PLACE	± .01	± 0.13	1 PLACE	± ---	± 0.25	TITLE SPADE TONGUE TERMINAL 16-14 AWG KRIMPTITE, 100-SERIES	
	INCH	METRIC													
3 PLACE	± .005	± ---													
2 PLACE	± .01	± 0.13													
1 PLACE	± ---	± 0.25													
DRAFT WHERE APPLICABLE MUST REMAIN WITHIN DIMENSIONS		SHEET NO. DATE 1 OF 1 99/11/12													
DRWG. BY HEB		PART NO. SD-19141-001													
CHK'D. BY RWD		FILE NAME 19141001.DGN													
APP'D. BY RWD		SCALE 4:1													
		THIS DRAWING CONTAINS INFORMATION THAT IS PROPRIETARY TO MOLEX-ETC INC. AND SHOULD NOT BE USED WITHOUT WRITTEN PERMISSION.													
		DIV. ET B													