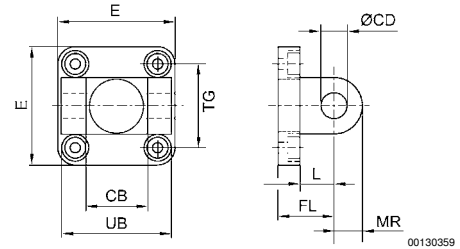


Cylinder accessories → Cylinder mountings; series CM1

MP2, clevis mounting

► Cylinder mounting in accordance with ISO 15552



Scope of delivery: clevis mounting incl. mounting screws

P523_025

Part No.	Piston Ø	CB H14	Ø CD H9	E	FL	L 1)	MR 2)	UB h13	TG	Material
1827001289	32	26	10	49 ±1	22 ±0,2	12	10	45	32,5 ±0,2	Aluminum, forged
1827001290	40	28	12	53 ±1	25 ±0,2	15	13	52	38 ±0,2	Aluminum, forged
1827001291	50	32	12	63 ±1	27 ±0,2	15	13	60	46,5 ±0,2	Aluminum, forged
1827001500	63	40	16	73 ±1	32 ±0,2	18	17	70	56,5 ±0,2	Aluminum, forged
1827001293	80	50	16	98 ±1	36 ±0,2	20	17	90	72,0 ±0,2	Aluminum, forged
1827001294	100	60	20	115 ±1	41 ±0,2	25	18	110	89,0 ±0,2	Aluminum, forged
1827004862	125	70	25	140	50 ±0,2	30	26	130	110 ±0,3	Aluminum, forged
1827004863	160	90	30	177	55 ±0,2	35	31	170	140 ±0,3	Nodular graphite iron
1827004864	200	90	30	216	60 ±0,2	35	31	170	175 ±0,3	Nodular graphite iron
1827004865	250	110	40	276	70 ±0,2	45	41	200	220 ±0,3	Nodular graphite iron
5239813402	320	120	45	350	80 ±0,2	50	45	220	270 ±0,3	Nodular graphite iron

Part No.	Surface									
1827001289	-									
1827001290	-									
1827001291	-									
1827001500	-									
1827001293	-									
1827001294	-									
1827004862	-									
1827004863	galvanized									
1827004864	galvanized									
1827004865	galvanized									
5239813402	galvanized									

1) Min.
2) Max.