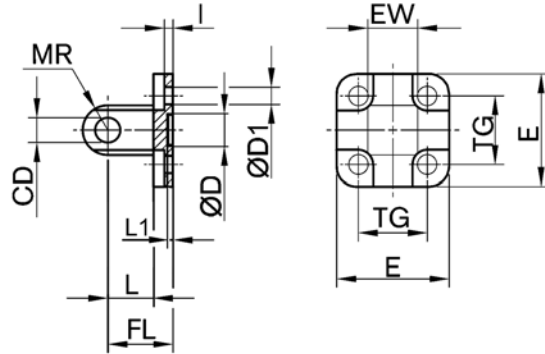


Cylinder accessories → Cylinder mountings; series CM1

**MP4, Rear eye for clevis mounting MP2, AB3**



P523\_024



00126403\_a

Scope of delivery: clevis incl. mounting screws

Part No.	Piston Ø	CD H9	Ø D	Ø D1	E	EW	FL ±0,2	I ±0,5	L 1)	L1 1)	MR 2)
<b>1825805368</b>	16	6	10 H13	4.5	27	12 -0,2/-0,6	16	2.6	10	3	6
<b>1827002300</b>	20	8	12 H13	5.5	34	16 -0,2/-0,6	20	2.6	14	3	8
<b>1827002301</b>	25	8	12 H13	5.5	40	16 -0,2/-0,6	20	2.6	14	3	8
<b>1827001283</b>	32	10	30 H11	6.6	48	26 -0,2/-0,6	22	5.5	12	4.5	10
<b>1827001284</b>	40	12	35 H11	6.6	53	28 -0,2/-0,6	25	5.5	15	4.5	12
<b>1827001285</b>	50	12	40 H11	9	63	32 -0,2/-0,6	27	6.5	15	4.5	12
<b>1827020086</b>	63	16	45 H11	9	73	40 -0,2/-0,6	32	6.5	20	4.5	16
<b>1827001287</b>	80	16	45 H11	11	98	50 -0,2/-0,6	36	10	20	4.5	16
<b>1827001288</b>	100	20	55 H11	11	115	60 -0,2/-0,6	41	10	25	4.5	20
<b>1827004866</b>	125	25	60 H11	14	140	70 -0,5/-1,2	50	10	30	7	26
<b>1827004867</b>	160	30	65 H11	18	180	90 -0,5/-1,2	55	10	35	7	31
<b>1827004868</b>	200	30	75 H11	18	220	90 -0,5/-1,2	60	11	35	7	31
<b>1827004869</b>	250	40	90 H11	22	280	110 -0,5/-1,2	70	11	45	11	41
<b>5239813412</b>	320	45	110 H11	26	350	120 -0,5/-1,2	80	15	50	11	45
R412012202	32	10	30 H11	6.6	48	26 -0,2/-0,6	22	5.5	12	4.5	10
R412012203	40	12	35 H11	6.6	53	28 -0,2/-0,6	25	5.5	15	4.5	12
R412012204	50	12	40 H11	9	63	32 -0,2/-0,6	27	6.5	15	4.5	12
<b>R412012205</b>	63	16	45 H11	9	73	40 -0,2/-0,6	32	6.5	20	4.5	16
R412012206	80	16	45 H11	11	98	50 -0,2/-0,6	36	10	20	4.5	16
R412012207	100	20	55 H11	11	115	60 -0,2/-0,6	41	10	25	4.5	20

Part No.	TG	Material	Surface	Screws	Standardization			
<b>1825805368</b>	18 ±0,2	Die-cast aluminum	-	-	-			
<b>1827002300</b>	22 ±0,4	Steel	galvanized	-	ISO 21287			
<b>1827002301</b>	26 ±0,4	Steel	galvanized	-	ISO 21287			
<b>1827001283</b>	32,5 ±0,2	Aluminum, forged	-	-	ISO 15552			
<b>1827001284</b>	38 ±0,2	Aluminum, forged	-	-	ISO 15552			
<b>1827001285</b>	46,5 ±0,2	Aluminum, forged	-	-	ISO 15552			
<b>1827020086</b>	56,5 ±0,2	Aluminum, forged	-	-	ISO 15552			
<b>1827001287</b>	72 ±0,2	Aluminum, forged	-	-	ISO 15552			

1) Min.  
2) Max.

## Cylinder accessories → Cylinder mountings; series CM1

**MP4, Rear eye for clevis mounting MP2, AB3**

Part No.	TG	Material	Surface	Screws	Standardization			
<b>1827001288</b>	89 ±0,2	Aluminum, forged	-	-	ISO 15552			
<b>1827004866</b>	110 ±0,3	Aluminum, forged	-	-	ISO 15552			
<b>1827004867</b>	140 ±0,3	Nodular graphite iron	nickel-plated	-	ISO 15552			
<b>1827004868</b>	175 ±0,3	Nodular graphite iron	nickel-plated	-	ISO 15552			
<b>1827004869</b>	220 ±0,3	Nodular graphite iron	nickel-plated	-	ISO 15552			
<b>5239813412</b>	270 ±0,3	Nodular graphite iron	galvanized	-	ISO 15552			
R412012202	32,5 ±0,2	Aluminum	anodized	Stainless steel	ISO 15552			
R412012203	38 ±0,2	Aluminum	anodized	Stainless steel	ISO 15552			
R412012204	46,5 ±0,2	Aluminum	anodized	Stainless steel	ISO 15552			
<b>R412012205</b>	56,5 ±0,2	Aluminum	anodized	Stainless steel	ISO 15552			
R412012206	72 ±0,2	Aluminum	anodized	Stainless steel	ISO 15552			
R412012207	89 ±0,2	Aluminum	anodized	Stainless steel	ISO 15552			
1) Min. 2) Max.								