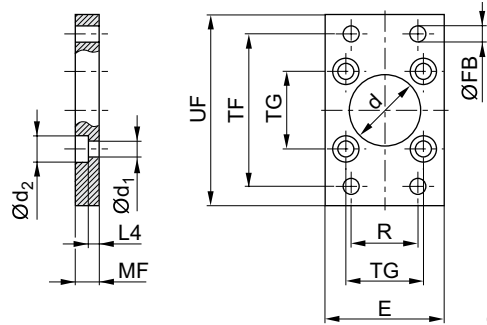


Cylinder accessories → Cylinder mountings; series CM1

**MF1, MF2, Flange mounting**

► Cylinder mounting in accordance with ISO 15552



00126399

00105812

Scope of delivery: flange mounting incl. mounting screws

Part No.	Piston Ø	Ød H11	Ød1	Ød2	E 1)	ØFB	L4	MF	R	TF	TG
<b>1827001277</b>	32	30	6.6	11	50	7	4.5	10	32	64	32,5 ±0,2
<b>1827001278</b>	40	35	6.6	11	55	9	4.5	10	36	72	38 ±0,2
<b>1827001279</b>	50	40	9	15	65	9	6	12	45	90	46,5 ±0,2
<b>1827001499</b>	63	45	9	15	75	9	6	12	50	100	56,5 ±0,2
<b>1827001281</b>	80	45	11	18	100	12	9	16	63	126	72 ±0,2
<b>1827001282</b>	100	55	11	18	120	14	9	16	75	150	89 ±0,2
<b>1827004861</b>	125	60	14	20	140	16	10.5	20	90	180	110 ±0,3
<b>1827001460</b>	160	65	18	26	180	18	9.5	20	115	230	140 ±0,3
<b>1827001461</b>	200	75	18	26	220	22	12.5	25	135	270	175 ±0,3
<b>1827001462</b>	250	90	22	33	280	26	10.5	25	165	330	220 ±0,3
<b>5239016012</b>	320	110	26	40	350	33	15	30	200	400	270 ±0,3

Part No.	UF	Material	Surface								
<b>1827001277</b>	80	Steel	galvanized								
<b>1827001278</b>	90	Steel	galvanized								
<b>1827001279</b>	110	Steel	galvanized								
<b>1827001499</b>	125	Steel	galvanized								
<b>1827001281</b>	154	Steel	galvanized								
<b>1827001282</b>	186	Steel	galvanized								
<b>1827004861</b>	220	Steel	galvanized								
<b>1827001460</b>	275	Steel	galvanized								
<b>1827001461</b>	312	Steel	galvanized								
<b>1827001462</b>	380	Steel	galvanized								
<b>5239016012</b>	470	Steel	galvanized								

1) Max.