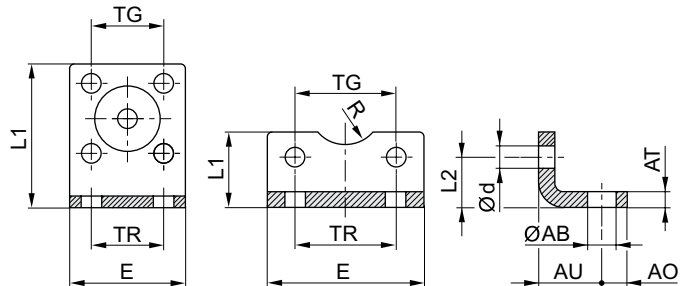


Cylinder accessories → Cylinder mountings; series CM1

MS1, Foot mounting



Ø16

00105808

00126387

Scope of delivery: 2 foot mountings incl. mounting screws

Part No.	Piston Ø	ØAB	AO	AT	AU ±0,2	Ød	E	L1	L2	R
1821332053	16	5.5	5	3	13	4.5	29	35.5	13	8
1827002284	20	6.6	6	4	16	5.4	36	22	16	10
1827002285	25	6.6	6	4	16	5.4	40	23	17	11
1827001271	32	7	8	4 ±0,3	24	6.6	48	25	15.5	15
1827001272	40	10	10	4 ±0,3	28	6.6	56	26	17	17.5
1827001273	50	10	11	5 ±0,3	32	9	68	32	21.5	20
1827001498	63	10	13	5 ±0,3	32	9	78	34	21.5	22.5
1827001275	80	12	16	6 ±0,5	41	11	98	47	27	22.5
1827001276	100	14.5	19	6 ±0,5	41	11	117	52	26.5	27.5
1827001310	125	16.5	20	8 ±1,0	45	13.5	144	69	30	30
1827001457	160	18.5	23	10 ±1,0	60	17.5	185	100	25	32.5
1827001458	200	24	26	12 ±1,0	70	17.5	220	120	40	37.5
1827001459	250	28	33	20 ±1,0	75	22	280	135	55	45
5239010502	320	35	45	23 ±1,0	85	26	350	200	65	55
1827002286	32	6.6	8	5	18	6.6	50	24	16	-
1827002287	40	9	8	5	20	6.6	60	29.5	21.5	-
1827002288	50	9	8	6	24	9	68	30	22	-
1827002289	63	11	12	6	27	9	84	39	28.5	-
1827002290	80	11	12	8	30	11	102	36.5	24.5	-
1827002291	100	13.5	12	8	33	11	123	38.5	26.5	-
3682202000	25	7	8	4	22	5.5	40	21	11.5	13.5
3662203000	32	7	8	5	24	5.5	47	26	16	15
3662204000	40	9	11	5	31	6.6	56	28	16	20
3662205000	50	9	12	6	33	6.6	63	35	22	23
3662206000	63	9	12	6	36	9	81	40	20.5	23
3662208000	80	12	15	8	43	9	95	45	26.5	26
3662210000	100	14	17	10	43	11	115	50	26	32
3662212000	125	16	25	12	45	14	140	60	35	40
3662225000	250	26	40	15	75	22	274	105	56	-
3662232000	320	33	45	18	85	26	344	125	63	-

Part No.	TG	TR	Material	Surface	Standardization				
1821332053	18 ±0,2	18	Steel	galvanized	-				
1827002284	22 ±0,2	22	Steel	galvanized	-				
1827002285	26 ±0,2	26	Steel	galvanized	-				
1827001271	32,5 ±0,2	32	Steel	galvanized	ISO 15552				
1827001272	38 ±0,2	36	Steel	galvanized	ISO 15552				

Cylinder accessories → Cylinder mountings; series CM1

MS1, Foot mounting

Part No.	TG	TR	Material	Surface	Standardiza- tion				
1827001273	46,5 ±0,2	45	Steel	galvanized	ISO 15552				
1827001498	56,5 ±0,2	50	Steel	galvanized	ISO 15552				
1827001275	72 ±0,2	63	Steel	galvanized	ISO 15552				
1827001276	89 ±0,2	75	Steel	galvanized	ISO 15552				
1827001310	110 ±0,3	90	Steel	galvanized	ISO 15552				
1827001457	140 ±0,3	115	Steel	galvanized	ISO 15552				
1827001458	175 ±0,3	135	Steel	galvanized	ISO 15552				
1827001459	220 ±0,3	165	Steel	galvanized	ISO 15552				
5239010502	270 ±0,3	200	Steel	galvanized	ISO 15552				
1827002286	32	32	Steel	galvanized	-				
1827002287	42	42	Steel	galvanized	-				
1827002288	50	50	Steel	galvanized	-				
1827002289	62	62	Steel	galvanized	-				
1827002290	82	82	Steel	galvanized	-				
1827002291	103	103	Steel	galvanized	-				
3682202000	27	26	Steel	galvanized	-				
3662203000	32	32	Steel	galvanized	-				
3662204000	40	36	Steel	galvanized	-				
3662205000	46	45	Steel	galvanized	-				
3662206000	59	50	Steel	galvanized	-				
3662208000	73	63	Steel	galvanized	-				
3662210000	90	75	Steel	galvanized	-				
3662212000	110	90	Steel	galvanized	-				
3662225000	218	165	Steel	galvanized	-				
3662232000	274	200	Steel	galvanized	-				