

Printed-circuit board connector - PC 35 HC/ 4-GF-15,00 - 1762767

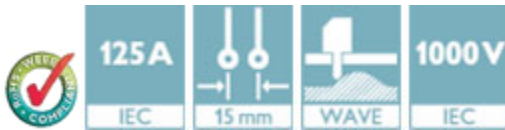
Please be informed that the data shown in this PDF Document is generated from our Online Catalog. Please find the complete data in the user's documentation. Our General Terms of Use for Downloads are valid (<http://phoenixcontact.com/download>)

Header, Nominal current: 125 A, Rated voltage (III/2): 1000 V, Number of positions: 4, Pitch: 15 mm, Color: green, Contact surface: Silver, Mounting: Wave soldering



Product Features

- PC 35 HC headers for use in combination with PC 35 plugs and IPC 35 headers
- Integrated threaded flange for screw connection with the PCB
- Integrated double flange for fixing with PC 35 connector and housing panel



Key Commercial Data

Packing unit	1 pc
Minimum order quantity	25 pc
Weight per Piece (excluding packing)	90.0 g
Custom tariff number	85366990
Country of origin	Poland

Technical data

Dimensions

Length	38 mm
Pitch	15.00 mm
Dimension a	45 mm
Constructional height	28.5 mm
Height	33.1 mm
Length of the solder pin	4.6 mm
Pin dimensions	2,4 x 2,5 mm
Pin spacing	11.00 mm
Hole diameter	3.6 mm

Printed-circuit board connector - PC 35 HC/ 4-GF-15,00 - 1762767

Technical data

General

Range of articles	PC 35 HC/...-GF
Insulating material group	IIIa
Rated surge voltage (III/3)	8 kV
Rated surge voltage (III/2)	8 kV
Rated surge voltage (II/2)	8 kV
Rated voltage (III/3)	1000 V
Rated voltage (III/2)	1000 V
Rated voltage (II/2)	1000 V
Connection in acc. with standard	EN-VDE
Nominal current I _N	125 A
Maximum load current	125 A
Insulating material	PBT
Flammability rating according to UL 94	V0
Color	green
Number of positions	4

Standards and Regulations

Connection in acc. with standard	EN-VDE
	CUL
Flammability rating according to UL 94	V0

Classifications

eCl@ss

eCl@ss 4.0	272607xx
eCl@ss 4.1	27260701
eCl@ss 5.0	27260701
eCl@ss 5.1	27260701
eCl@ss 6.0	27260704
eCl@ss 7.0	27440402
eCl@ss 8.0	27440402
eCl@ss 9.0	27440402

ETIM

ETIM 3.0	EC001121
ETIM 4.0	EC002637
ETIM 5.0	EC002637

Printed-circuit board connector - PC 35 HC/ 4-GF-15,00 - 1762767

Classifications

UNSPSC

UNSPSC 6.01	30211810
UNSPSC 7.0901	39121409
UNSPSC 11	39121409
UNSPSC 12.01	39121409
UNSPSC 13.2	39121409

Approvals

Approvals

Approvals

UL Recognized / cUL Recognized / CCA / IEC60335 CB Scheme / VDE Gutachten mit Fertigungsüberwachung / EAC / EAC / cULus Recognized

Ex Approvals

Approvals submitted

Approval details

UL Recognized		
	B	C
Nominal current I _N	115 A	115 A
Nominal voltage U _N	600 V	600 V

cUL Recognized		
	B	C
Nominal current I _N	105 A	105 A
Nominal voltage U _N	600 V	600 V

CCA

Printed-circuit board connector - PC 35 HC/ 4-GF-15,00 - 1762767

Approvals

IECEE CB Scheme	
Nominal current I _N	125 A
Nominal voltage U _N	1000 V

VDE Gutachten mit Fertigungsüberwachung	
Nominal current I _N	125 A
Nominal voltage U _N	1000 V

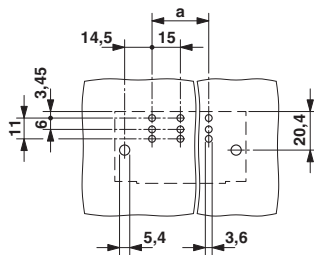
EAC

EAC

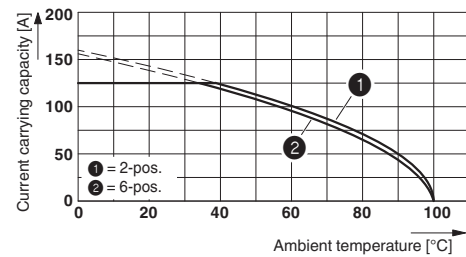
cULus Recognized

Drawings

Drilling diagram



Diagram



Type: PC 35 HC/...-STF-15,00 with PC 35 HC/...-GF-15,00

Printed-circuit board connector - PC 35 HC/ 4-GF-15,00 - 1762767

Dimensional drawing

