

**PLEASE CHECK WWW.MOLEX.COM FOR LATEST PART INFORMATION**

**Part Number:** [1731120342](#)  
**Status:** **Active**  
**Overview:** [FCT D-Sub Connectors](#)  
**Description:** FCT Female Screw Lock, M3 Inner and Outer Thread, 12.70mm Length, Tin-Plated Steel

**Documents:**

[Brochure \(PDF\)](#) [RoHS Certificate of Compliance \(PDF\)](#)

**General**

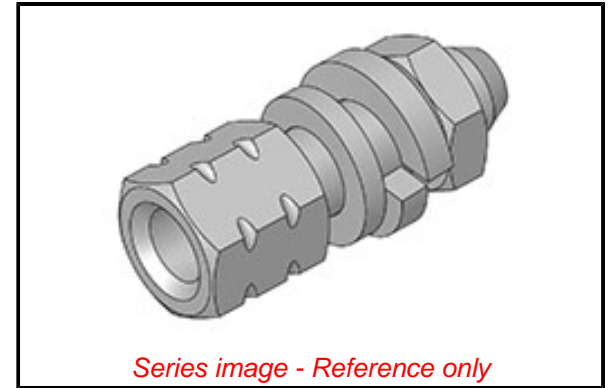
Product Family	D-Sub Products
Series	<a href="#">173112</a>
Accessory Type	Locking Mechanism
IP Rating	N/A
Overview	<a href="#">FCT D-Sub Connectors</a>
Product Category	Accessories
Product Name	FCT Products
UPC	191128099134

**Physical**

Material - Body	Steel
Net Weight	2.000/g
Packaging Type	Bag
Thread Size	M3 / M3
Thread Type	Standard

**Material Info**

Engineering Number	F-GSCH1/5-K128SN
--------------------	------------------



**EU ELV**

**Not Relevant**

**EU RoHS**

**Compliant with Exemption 6(a)-I**

**REACH SVHC**

Not Reviewed

**Halogen-Free**

**Status**

**Not Reviewed**

For more information, please visit [Contact US](#)

China ROHS

ELV

RoHS Phthalates

**China RoHS**

50 Image

Not Relevant

Not Contained

**Search Parts in this Series**

[173112 Series](#)

**PLEASE CHECK WWW.MOLEX.COM FOR LATEST PART INFORMATION**