

PLEASE CHECK WWW.MOLEX.COM FOR LATEST PART INFORMATION

Part Number: [172159-0003](#)
Status: **Active**
Overview: EdgeMate™ Wire-to-Edge-Card Power Connector
Description: 3.96mm Pitch EdgeMate Crimp Housing, Female, Nylon 6/6, White, UL94-V2, without Lock, 3 Circuits

Documents:

[3D Model](#) [Packaging Specification PK-172159-0001 \(PDF\)](#)
[Drawing \(PDF\)](#) [RoHS Certificate of Compliance \(PDF\)](#)
[Product Specification PS-172160-0001 \(PDF\)](#)

Agency Certification

UL E29179

General

Product Family Edge Card Connectors
 Series [172159](#)
 Circuit Size Range 1-64 Circuits
 Component Type Edgecard to Wire
 Data Rate N/A
 Edge Card Thickness 1.60mm
 High Power Bay (30A or more) No
 Orientation Right Angle
 Overview [EdgeMate™ Wire-to-Edge-Card Power Connector](#)
 Product Name EdgeMate™
 Standard Based AMC
 UPC 887191569543

Physical

(p)ower-(s)ignal Configuration 3p - 0s
 Circuits (Loaded) 3
 Circuits (maximum) 3
 Color - Resin White
 Durability (mating cycles max) 25
 Entry Angle 90° Angle (Side Entry)
 Keying to Mating Part Yes
 Material - Plating Mating N/A
 Material - Resin Nylon
 Net Weight 1.440/g
 PCB Thickness - Recommended 1.57mm
 Packaging Type Bag
 Panel Mount No
 Pitch - Mating Interface 3.96mm
 Pitch - Termination Interface 3.96mm
 Polarized to Mating Part No
 Temperature Range - Operating -40°C to +105°C
 Termination Interface: Style Surface Mount

Electrical

Current - Maximum per Contact 7A
 Voltage - Maximum 250V

Material Info

Reference - Drawing Numbers

[Packaging Specification](#) PK-172159-0001
[Product Specification](#) PS-172160-0001

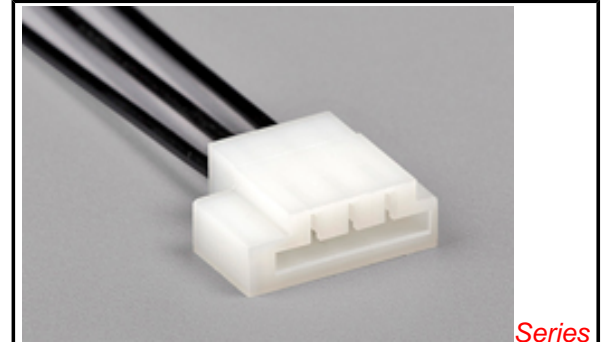


image - Reference only

Series

EU RoHS

ELV and RoHS Compliant
REACH SVHC Contains SVHC: No
Low-Halogen Status Low-Halogen

China RoHS



Need more information on product environmental compliance?

Email productcompliance@molex.com
 For a multiple part number RoHS Certificate of Compliance, [click here](#)

Please visit the [Contact Us](#) section for any non-product compliance questions.

Search Parts in this Series

[172159Series](#)

Mates With

[Edge Card PCB](#)

Use With

[172160](#)

This document was generated on 03/02/2015

PLEASE CHECK WWW.MOLEX.COM FOR LATEST PART INFORMATION