

**PLEASE CHECK WWW.MOLEX.COM FOR LATEST PART INFORMATION**

**Part Number:** [1719710215](#)  
**Status:** **Active**  
**Overview:** [SL Modular Connectors](#)  
**Description:** 2.54mm Pitch SL Header, Single Row, Vertical, LCP, Shrouded, Through Hole, 0.75µm Selective Gold (Au) Plating, 15 Circuits

**Documents:**

<a href="#">3D Model</a>	<a href="#">Product Specification PS-70400-001 (PDF)</a>
<a href="#">Drawing (PDF)</a>	<a href="#">Packaging Specification 1719710000-PK-000 (PDF)</a>
<a href="#">3D Model (PDF)</a>	<a href="#">RoHS Certificate of Compliance (PDF)</a>
<a href="#">Product Specification 1719710000-PS-000 (PDF)</a>	

**General**

Product Family	PCB Headers
Series	<a href="#">171971</a>
Application	Signal, Wire-to-Board
Overview	<a href="#">SL Modular Connectors</a>
Product Name	SL
UPC	889056784887

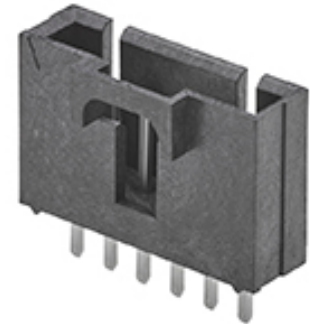
**Physical**

Breakaway	No
Circuits (Loaded)	15
Circuits (maximum)	15
Color - Resin	Black
First Mate / Last Break	No
Glow-Wire Capable	No
Guide to Mating Part	No
Keying to Mating Part	None
Lock to Mating Part	Yes
Material - Metal	Brass
Material - Plating Mating	Gold
Material - Plating Termination	Matte Tin
Material - Resin	Liquid Crystal Polymer
Net Weight	2.687/g
Number of Rows	1
Orientation	Vertical
PC Tail Length	3.30mm
PCB Locator	No
PCB Retention	None
PCB Thickness - Recommended	1.57mm
Packaging Type	Tube
Pitch - Mating Interface	2.54mm
Pitch - Termination Interface	2.54mm
Plating min - Mating	0.750µm
Plating min - Termination	2.000µm
Polarized to Mating Part	Yes
Polarized to PCB	Yes
Shrouded	Fully
Temperature Range - Operating	-40° to +105°C
Termination Interface: Style	Through Hole

**Electrical**

Current - Maximum per Contact	3.0A
Voltage - Maximum	250V

**Material Info**



*Series image - Reference only*

**EU ELV**

**Not Relevant**

**EU RoHS**

**Compliant**

**REACH SVHC**

Not Contained Per -  
D(2020)4578-DC (25  
June 2020)

**Halogen-Free**

**Status**

**Low-Halogen**

For more information, please visit [Contact US](#)

China ROHS

ELV

RoHS Phthalates

**China RoHS**

Green Image

Not Relevant

Not Contained

**Search Parts in this Series**

[171971](#) Series

**Mates With**

SL Insulation Displacement Connector  
Assembly [70400](#) (Version G) <br>SL  
Receptacle [70430](#) (Version G), [70066](#)  
(Version G and N)

**Reference - Drawing Numbers**

Packaging Specification

Product Specification

Sales Drawing

1719710000-PK-000

1719710000-PS-000, PS-70400-001

1719710000-SD-000

This document was generated on 10/27/2020

**PLEASE CHECK [WWW.MOLEX.COM](http://WWW.MOLEX.COM) FOR LATEST PART INFORMATION**