

**PLEASE CHECK WWW.MOLEX.COM FOR LATEST PART INFORMATION**

**Part Number:** [171692-0110](#)  
**Status:** **Active**  
**Overview:** Mega-Fit Power Connectors  
**Description:** Mega-Fit™ Receptacle Housing, Dual Row, 10 Circuit, UL 94 V-0, Bag

**Documents:**

[3D Model](#) [Test Summary TS-170001-001 \(PDF\)](#)  
[Drawing \(PDF\)](#) [RoHS Certificate of Compliance \(PDF\)](#)

**Agency Certification**

CSA LR19980  
 UL E29179

**General**

Product Family Crimp Housings  
 Series [171692](#)  
 Application Power, Wire-to-Board, Wire-to-Wire  
 Overview [Mega-Fit Power Connectors](#)  
 Product Name Mega-Fit™  
 UPC 887191246888

**Physical**

Circuits (maximum) 10  
 Circuits Detail 10  
 Color - Resin Black  
 Flammability 94V-0  
 Gender Male  
 Glow-Wire Compliant No  
 Lock to Mating Part Yes  
 Material - Resin PBT  
 Net Weight 4.340/g  
 Number of Rows 2  
 Packaging Type Bag  
 Panel Mount No  
 Pitch - Mating Interface 5.70mm  
 Pitch - Termination Interface 5.70mm  
 Polarized to Mating Part Yes  
 Temperature Range - Operating -40°C to +105°C

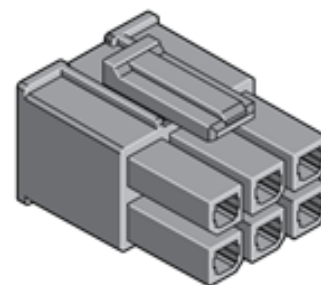
**Electrical**

Current - Maximum per Contact 23A

**Material Info**

**Reference - Drawing Numbers**

Sales Drawing SD-171692-0100  
 Test Summary TS-170001-001



*image - Reference only*

*Series*

**EU RoHS**

**ELV and RoHS  
 Compliant**  
**REACH SVHC**  
 Not Reviewed  
**Low-Halogen Status**  
 Not Reviewed

**China RoHS**



**Need more information on product  
 environmental compliance?**

Email [productcompliance@molex.com](mailto:productcompliance@molex.com)  
 For a multiple part number RoHS Certificate of  
 Compliance, [click here](#)

Please visit the [Contact Us](#) section for any  
 non-product compliance questions.

**Search Parts in this Series**

[171692Series](#)

**Mates With**

Mega-Fit™ Header [76825](#) , [76829](#) , [172064](#)  
 , [172065](#)

**Use With**

Mega-Fit™ Crimp Terminals, [172063](#)